

Poudre River Forum

A Working River: Water for Cities and Towns

February 8, 2014

Lee Rozaklis

AMEC Environment & Infrastructure

(formerly Hydrosphere)

lee.rozaklis@amec.com

The Poudre supplies water to...



- Twelve cities and towns
- More than 300,000 people
- Two major universities
- More than 9,000 businesses
- One regional power plant

Major M&I Water Providers

- City of Fort Collins

- City of Greeley

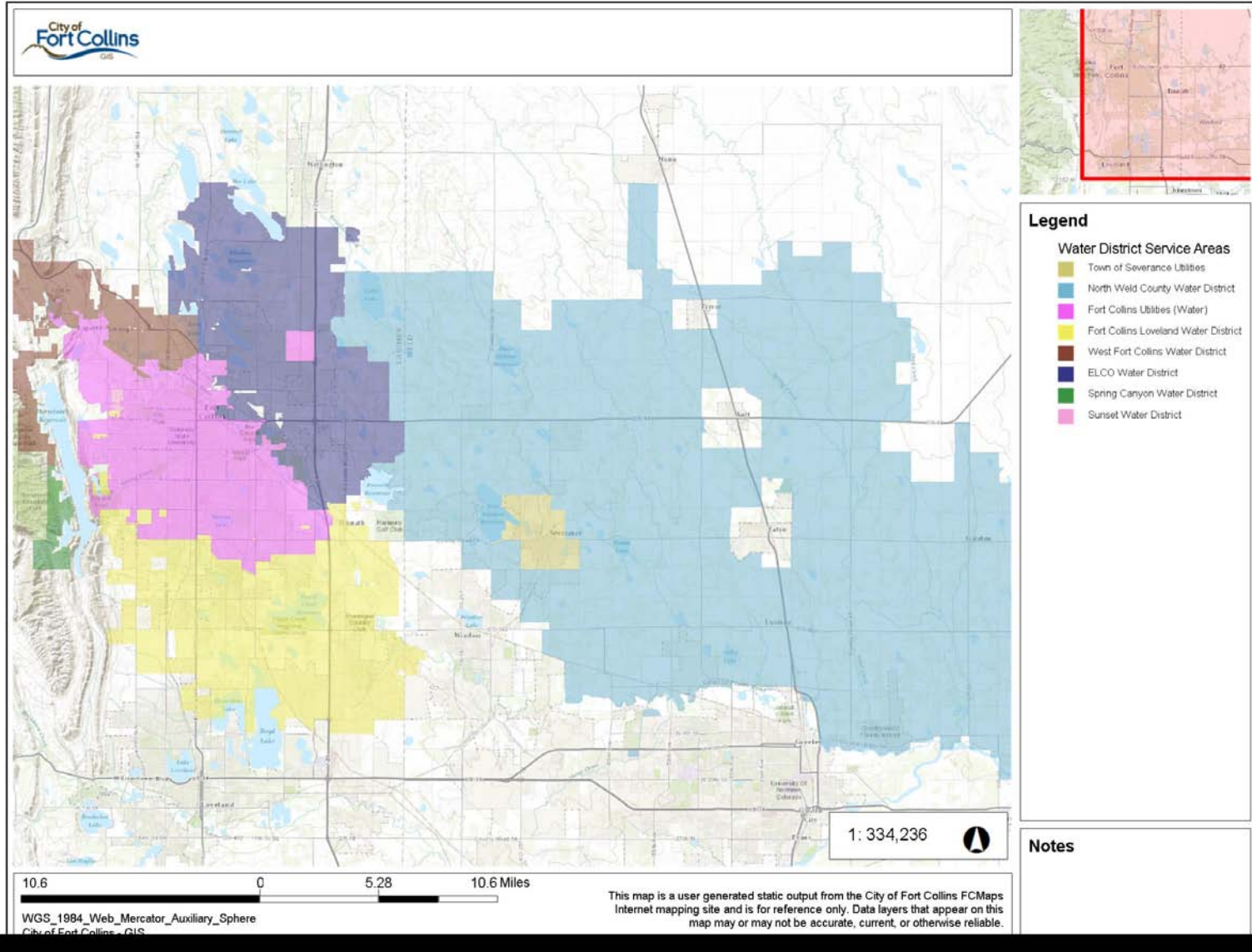
- Tri-Districts
 - Fort Collins-Loveland Water District
 - North Weld County Water District
 - East Larimer County Water District

- City of Thornton (future)

- Service area population \approx 130,000
- Also supplies water to: West Fort Collins WD, large industrial users (Anheuser-Busch), Rawhide Power Plant via reuse plan
- Water use \approx 29,000 AF (treated and ditch water)
- Water supplies: Colorado River, Poudre River, Michigan River
- Storage: Joe Wright Reservoir (6,500 AF)
- Water from Poudre \approx 13,000 AF (treated and ditch water)

- Service area population \approx 100,000
- Also supplies water to: Kodak, Evans, Windsor, Milliken
- Water use \approx 30,000 AF (treated and raw water)
- Water supplies from Poudre River, Big Thompson River, Colorado River, Laramie River
- Storage: Five high mountain reservoirs (8,000 AF), Milton Seaman Reservoir (5,000 AF)
- Water from Poudre \approx 15,000 AF (treated and raw water)

Tri-Districts: Where Are They?



Tri-Districts



- Combined service area population \approx 100,000
- Rural Larimer & Weld counties, Ault, Eaton, Galeton, Gill, Lucerne, Pierce, Severance, Timnath, Windsor, parts of Fort Collins & Loveland
- Water use \approx 22,000 AF (treated and raw water)
- Water supplies from Colorado River, Poudre River, Laramie River
- No owned storage, rely on CBT project
- Water from Poudre \approx 2,000 AF (treated and raw water)

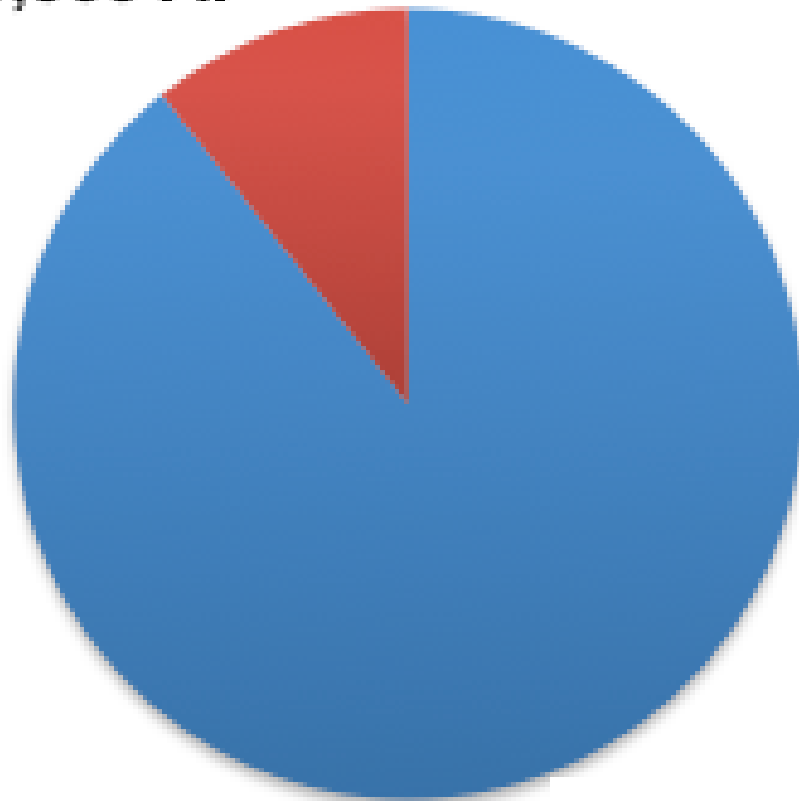
Existing M&I Uses



Provider	Total Water Use	Water from Poudre
Fort Collins	29,000 AF	13,000 AF
Greeley	30,000 AF	15,000 AF
Tri-Districts	21,000 AF	2,000 AF
Totals	80,000 AF	30,000 AF

M&I & Irrigation Diversions of Poudre River Water

30,000 AF

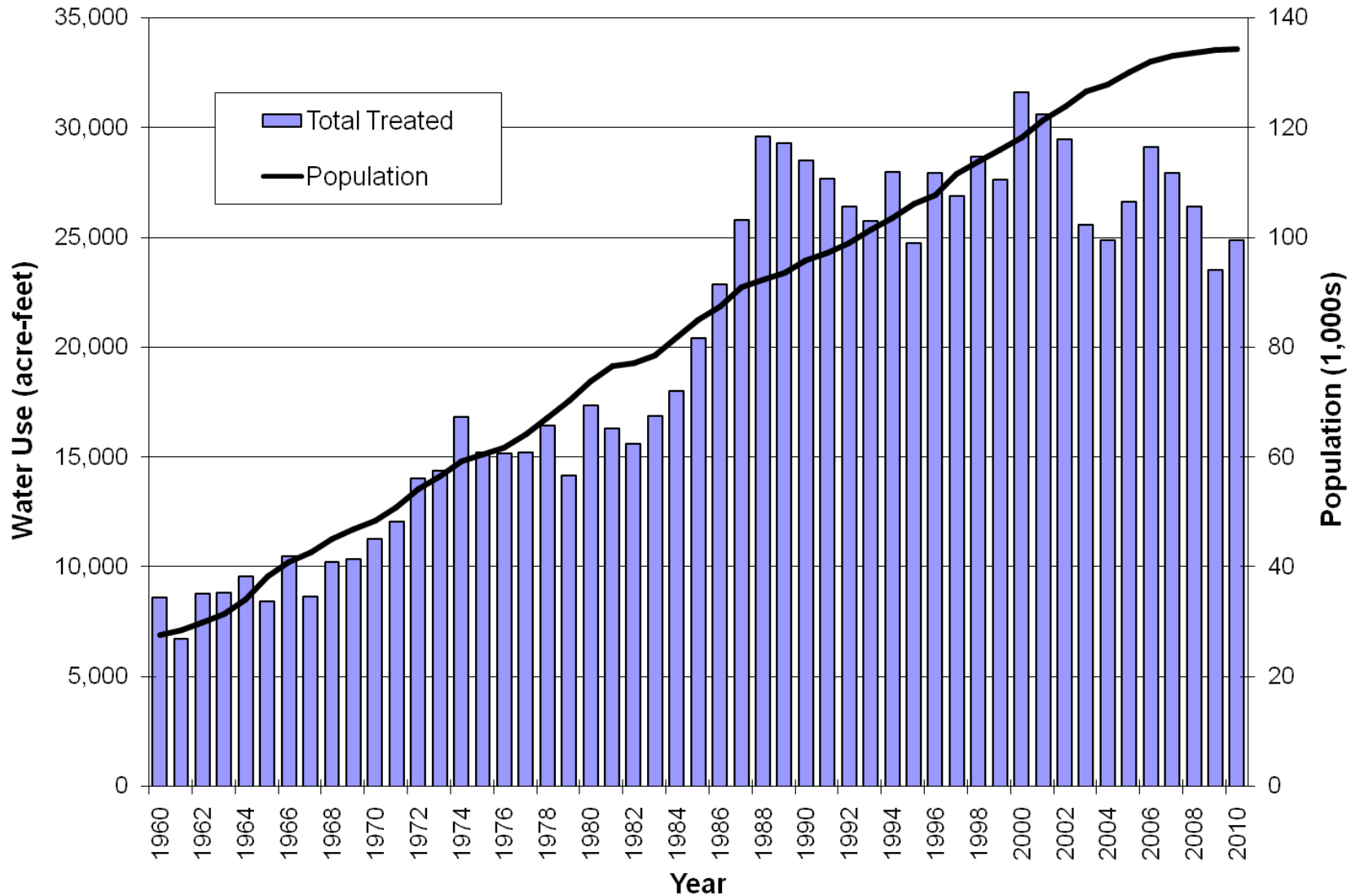


250,000 AF

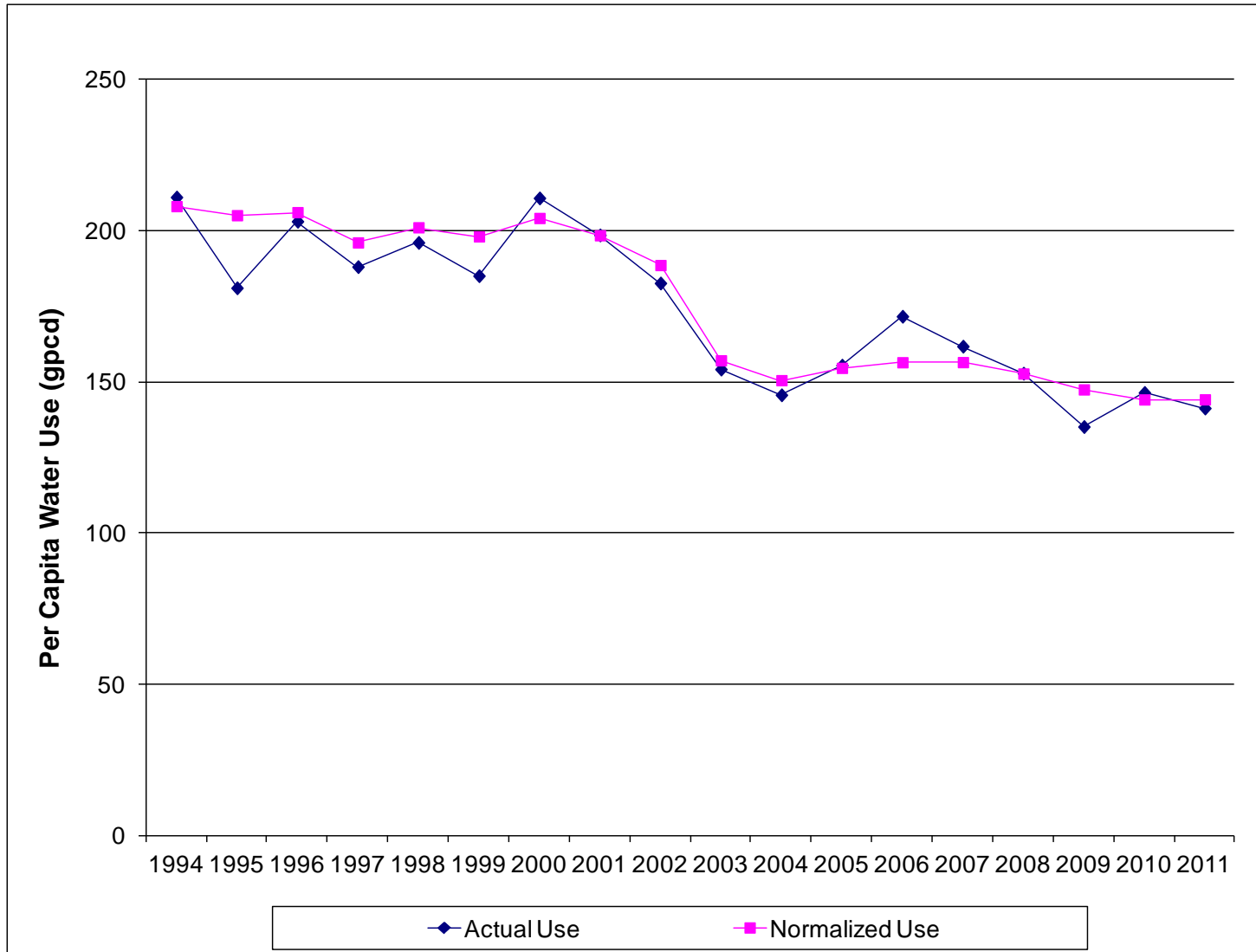
- Irrigation Diversions
- M&I Diversions

- Since 2002, per capita uses have generally declined by about 20%
- Overall uses have declined by 10% -15% while populations have grown by 10%
- Indoor per capita uses continue to decline due to advances in technology
- Outdoor per capita uses also declining, but not as much

City of Fort Collins Treated Water Use and Service Area Population 1960-2010



Fort Collins Per Capita Water Use



- Fort Collins (Drake WWTP) 10 MGD
- Fort Collins (Mulberry WWTP) 4 MGD
- South Fort Collins Sanitation District 2.8 MGD
- Box Elder Sanitation District 2.5 MGD
- Windsor 1.3 MGD
- Kodak 1.0 MGD
- Significant amount of reuse: Anheuser Busch,
Rawhide Power Plant

- Population growth (endless?)
- Continued savings in indoor uses (maybe 25%)
- Water loss reduction: a no-brainer
- Some near-term savings in outdoor use (how much without impacting level of “urban green”?)
- Climate change:
 - Earlier snowmelt - loss of “free storage”
 - Outdoor uses: eventually greater unit demands or a “less green” urban environment

- Overall, M&I water demand is projected to grow by more than 60% by 2050
- Fort Collins & Greeley: full use of CBT and changed irrigation rights, more storage
- Tri-Districts: use of Poudre supplies, more storage
- More storage, but where? Could it come from partnerships with agriculture?
- Thornton: Northern Supply Project delivery options: could a river run through it?