

Cache la Poudre: Water for Industry

Matt Bailey
Odell Brewing Company

Cache la Poudre

- The artery for business in Fort Collins and Northern Colorado
- From Agriculture to Computers chips to Jet turbines to Beer



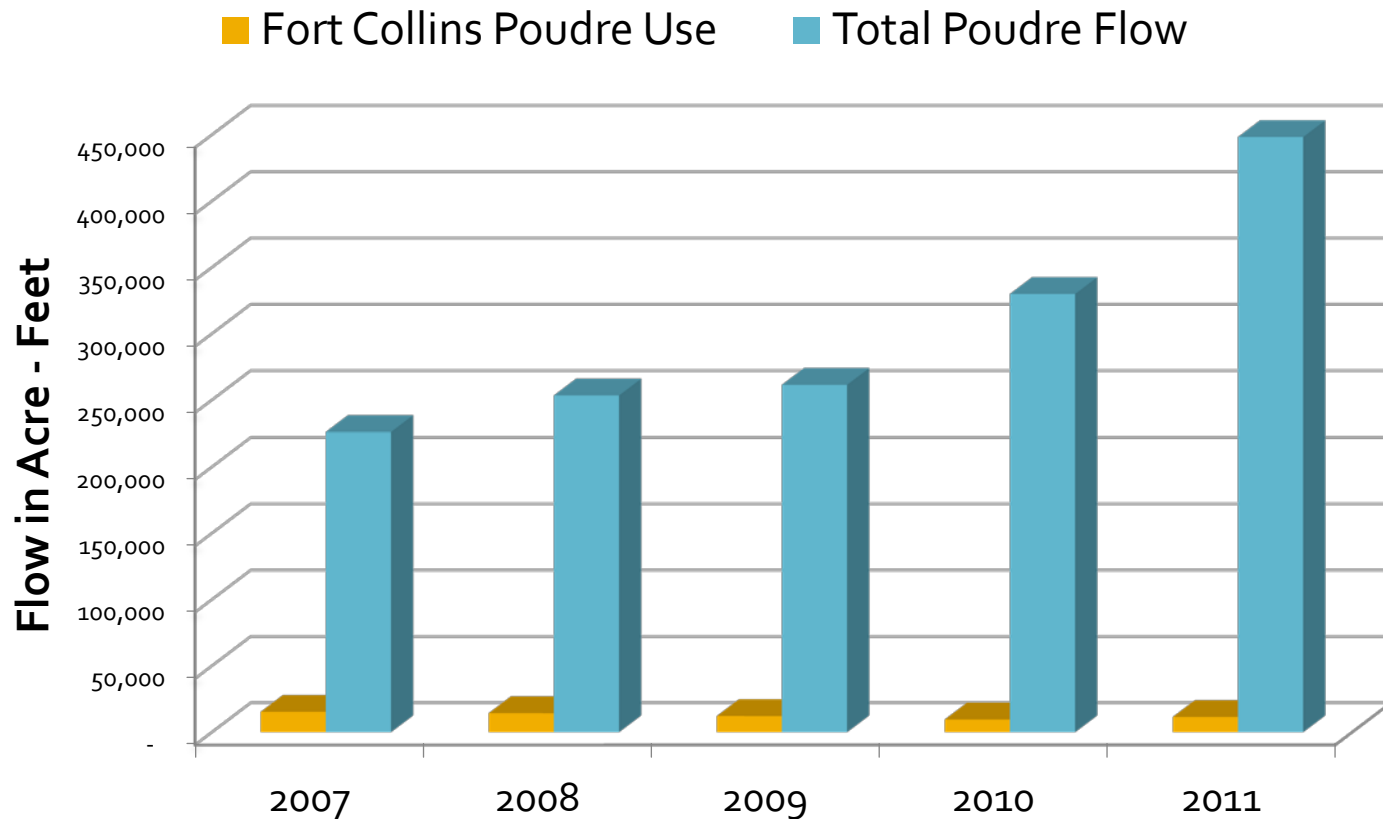
AVAGO
TECHNOLOGIES

WOODWARD



How much water does Fort Collins use from the Cache la Poudre?

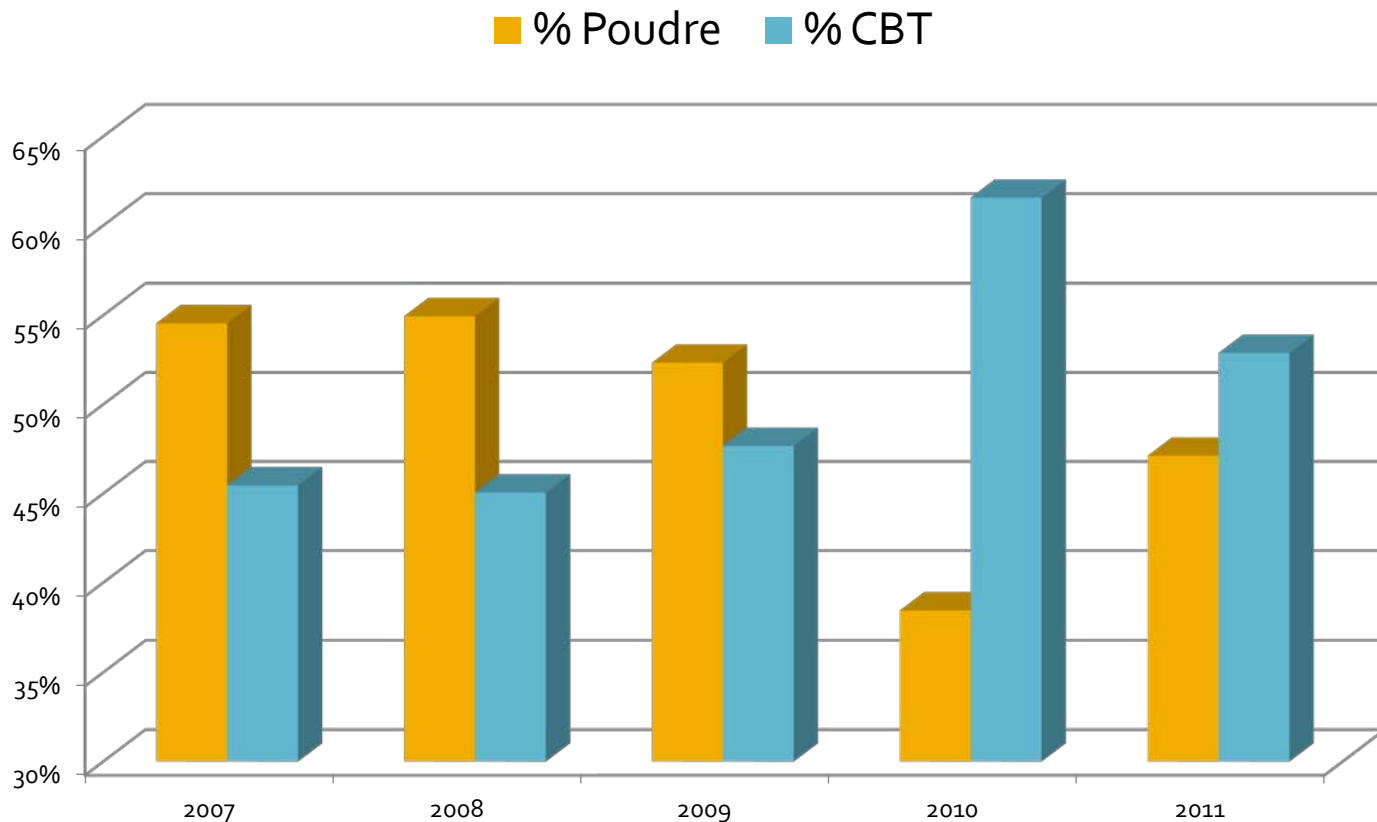
- From 1884 – 2012
 - Average of 4.3% of total river flow



Courtesy Donnie Dustin - City of Fort Collins Utilities

How much water does Fort Collins use from the Cache la Poudre?

- On average Fort Collins receives 50% of water from Poudre



Courtesy Donnie Dustin - City of Fort Collins Utilities



John Pitlick and Ellen Wohl photo

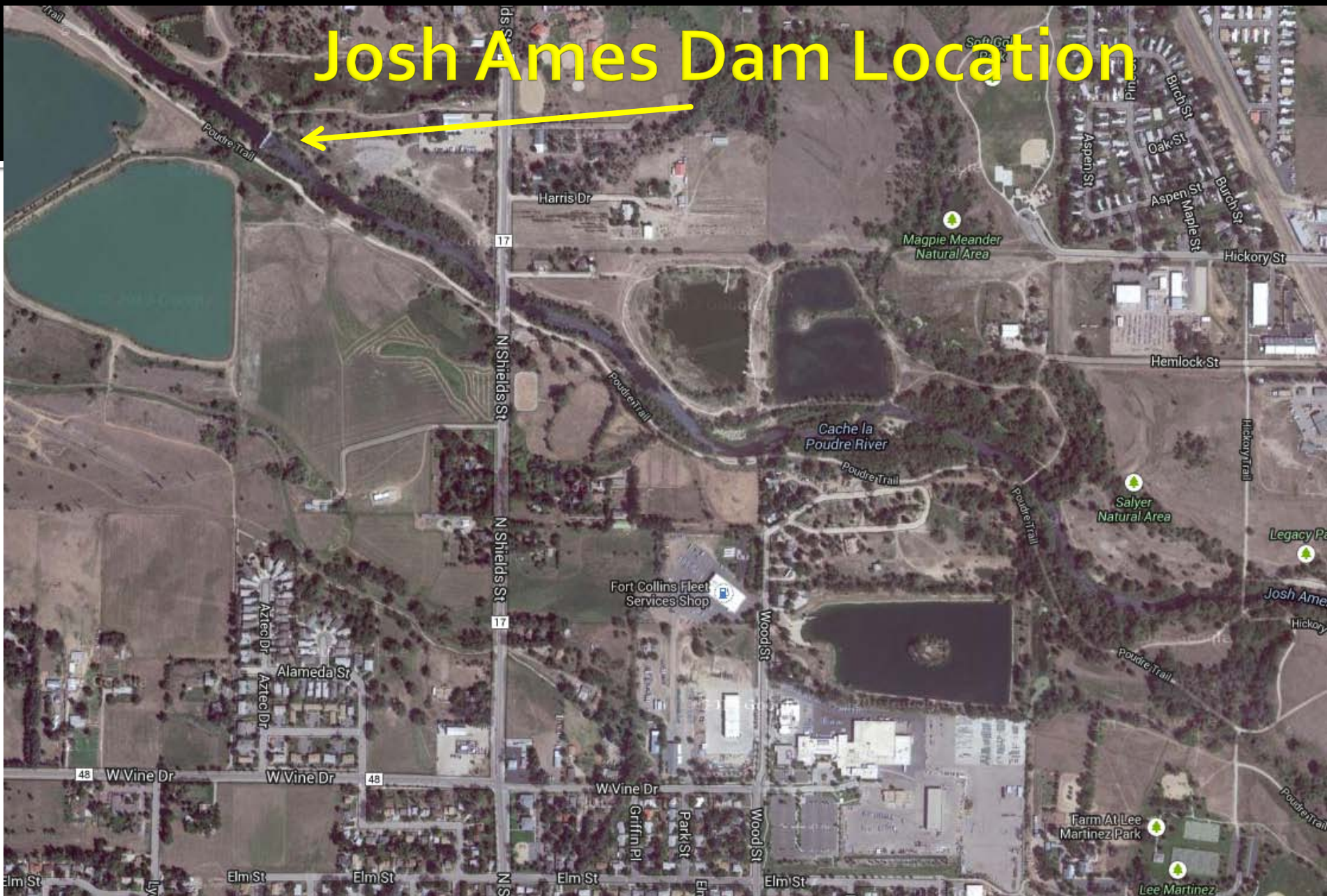
=



Northern Colorado Brewers Water Conservation Group

- Focus is only on Water and our Impact
 - Formed in 2013
 - Member are most Fort Collins Breweries
- Purpose
 - Education
 - Share water conservation best practices and case studies from each brewery
 - Work together and support projects that preserve water supply and quality of water in Northern Colorado
 - Donations made as a group

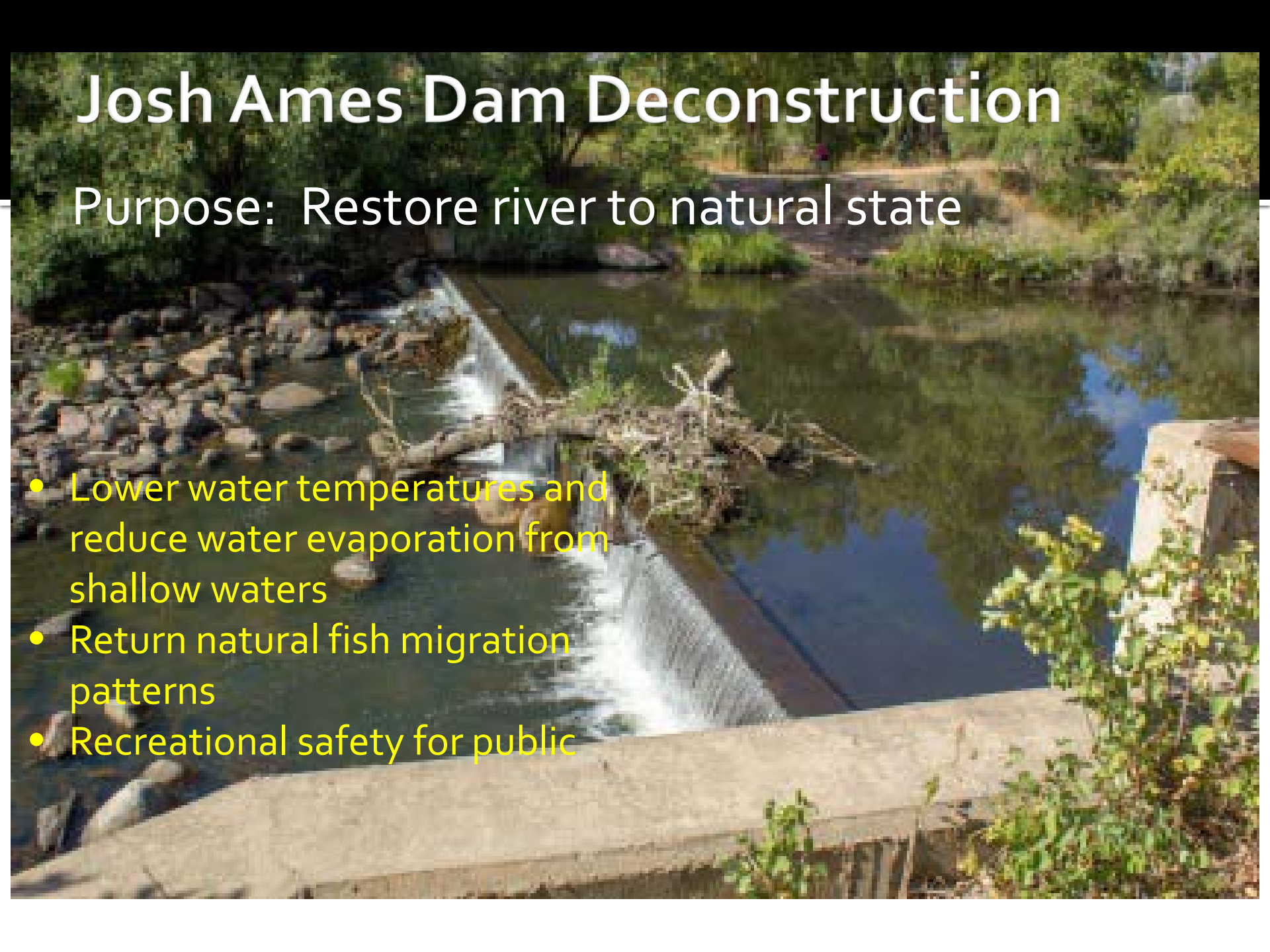
Josh Ames Dam Location



Josh Ames Dam Deconstruction

Purpose: Restore river to natural state

- Lower water temperatures and reduce water evaporation from shallow waters
- Return natural fish migration patterns
- Recreational safety for public





Josh Ames During Removal

Josh Ames After





=



John Pitlick and Ellen Wohl photo