

The background of the slide is a scenic landscape photograph. It shows a wide valley with rolling green hills. In the foreground, there are lush green fields with some purple and white wildflowers. A river flows through the valley on the right side. In the background, there are large, rugged mountains under a blue sky with scattered white clouds. The title text is overlaid on a semi-transparent grey banner across the top half of the image.

Achieving More Together: Fostering Collaboration for Healthy, Working Rivers

Josh Goldstein

The Nature Conservancy & Bridge Collaborative

Poudre River Forum 2020





We are all in this
together, by ourselves.

Lily Tomlin

“ quote fancy ”



The pathway to 9+ billion people...



Achieving More Together: 3 *Helpful Ingredients*



Defining the 'right' shared problem to solve

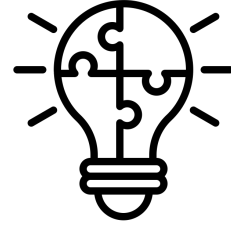


Setting and measuring progress towards shared goals



Pursuing unexpected collaborations

Achieving More Together: 3 *Helpful Ingredients*



Defining the 'right' shared problem to solve



Setting and measuring progress towards shared goals



Pursuing unexpected collaborations



THE NATURE CONSERVANCY WORKS IN
79 COUNTRIES AND TERRITORIES
AROUND THE WORLD

- **OFFICE**
- **IMPACT**
through partners, policy, public
funding initiatives or legacy programs

Mbé River



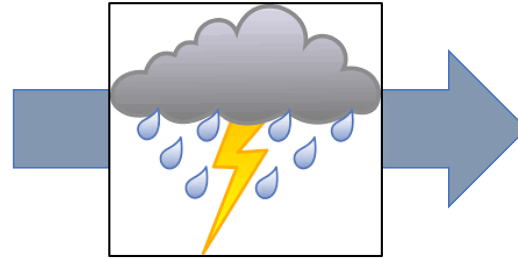
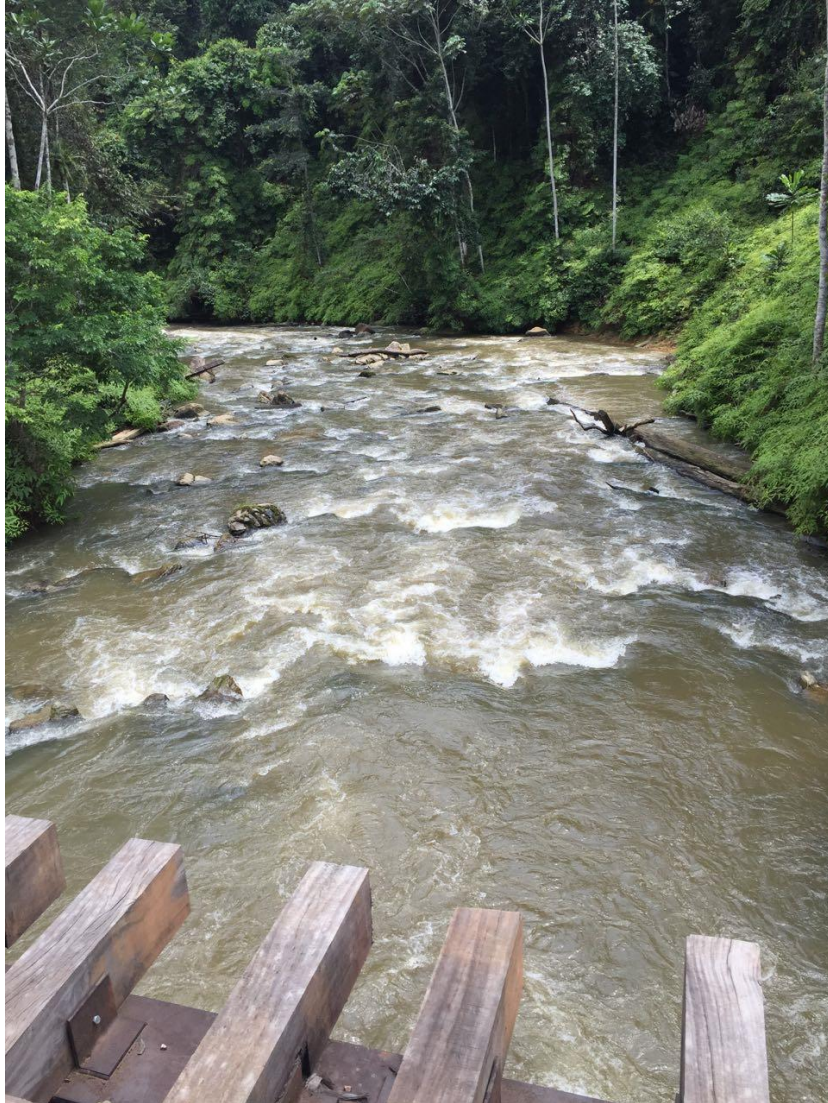
THE NATURE CONSERVANCY WORKS IN
**79 COUNTRIES AND TERRITORIES
AROUND THE WORLD**

• **IMPACT**
through partners, policy, public
funding initiatives or legacy programs

**OUR
WORLD**
The Nature
Conservancy 

SATURDAY

Clean river, low sediment load



SUNDAY

High sediment load in Mbé river



High sediment in
main river channel

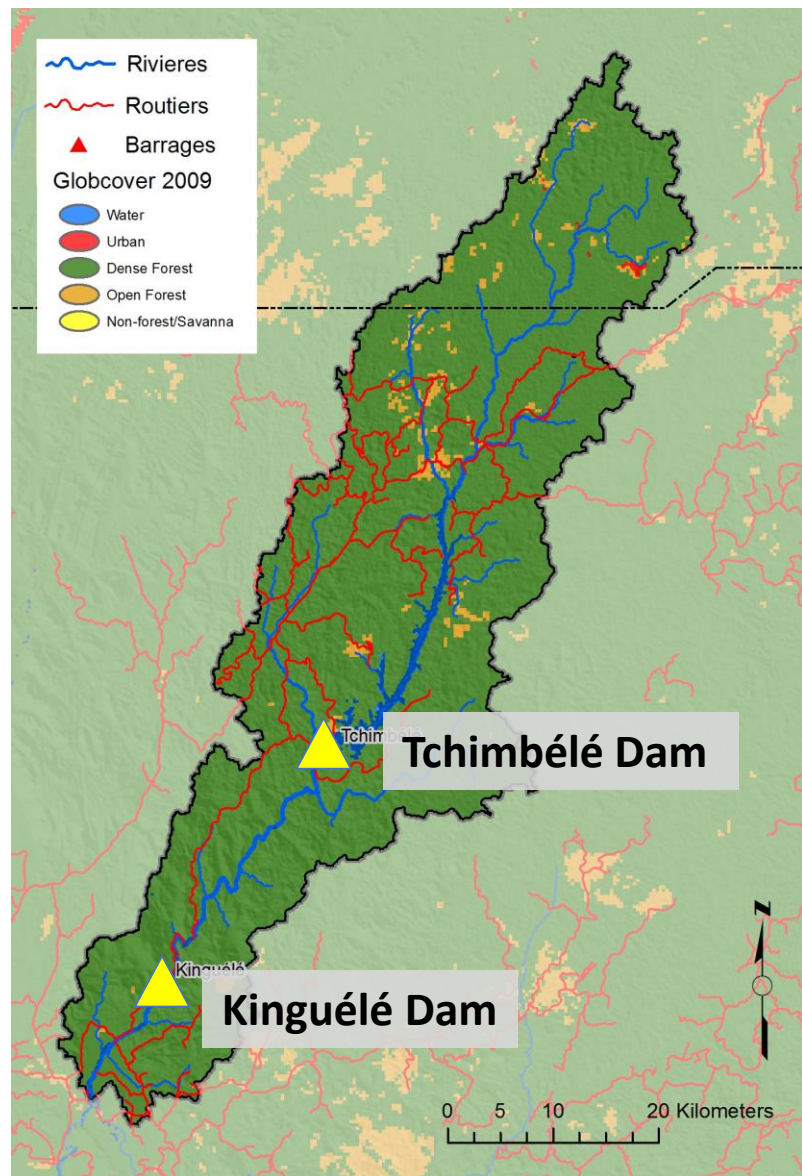


Cleaner tributaries
away from roads

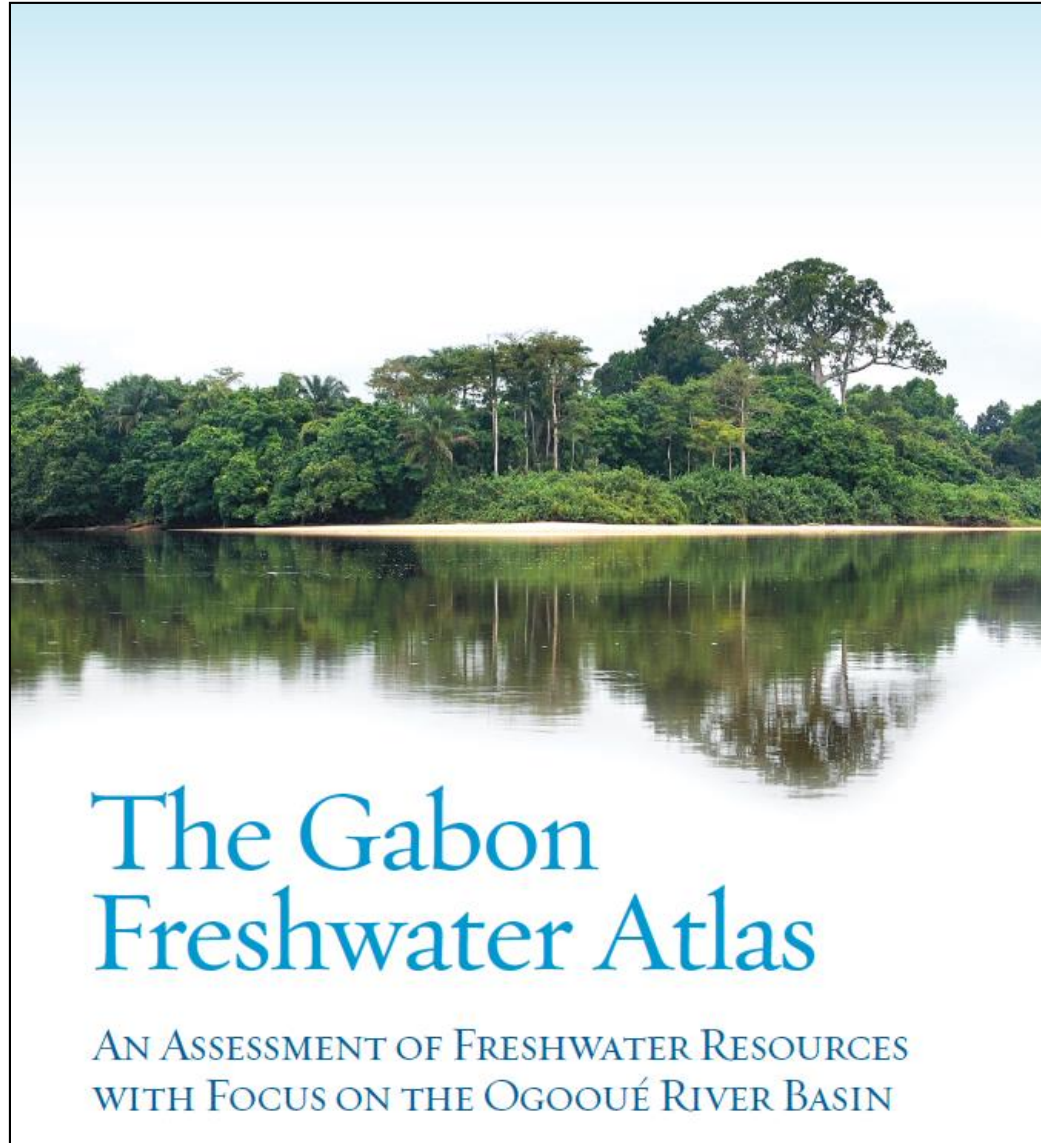


Mbé River

- Hydropower
- Water supply
- Forestry
- Mining
- National Park
- Rural villages
- Small-scale agriculture
- (Disease outbreaks)



Gabon Freshwater Atlas



- Build a more comprehensive database of information to support management of freshwater resources
- Input on current conditions to inform national land use and river basin planning efforts

Some of the Global Pressures on Rivers

People

2.1 billion people lack access to safely managed drinking water sources

4.5 billion people lack access to safely managed sanitation services

4.0 billion people lack sufficient water at least one month per year

~80% of wastewater globally is not safely treated



Nature

Hydrologic alteration

Water quality degradation

Habitat destruction

Invasive species

Overharvest



**Defining the 'right' shared
problem to solve**

- Taken sufficient time to understand the shared risks?
- Valued input from all sources of evidence in defining the problem?
- Right partners engaged to prevent blind spots about key issues?

Achieving More Together: 3 *Helpful Ingredients*



Defining the 'right' shared problem to solve

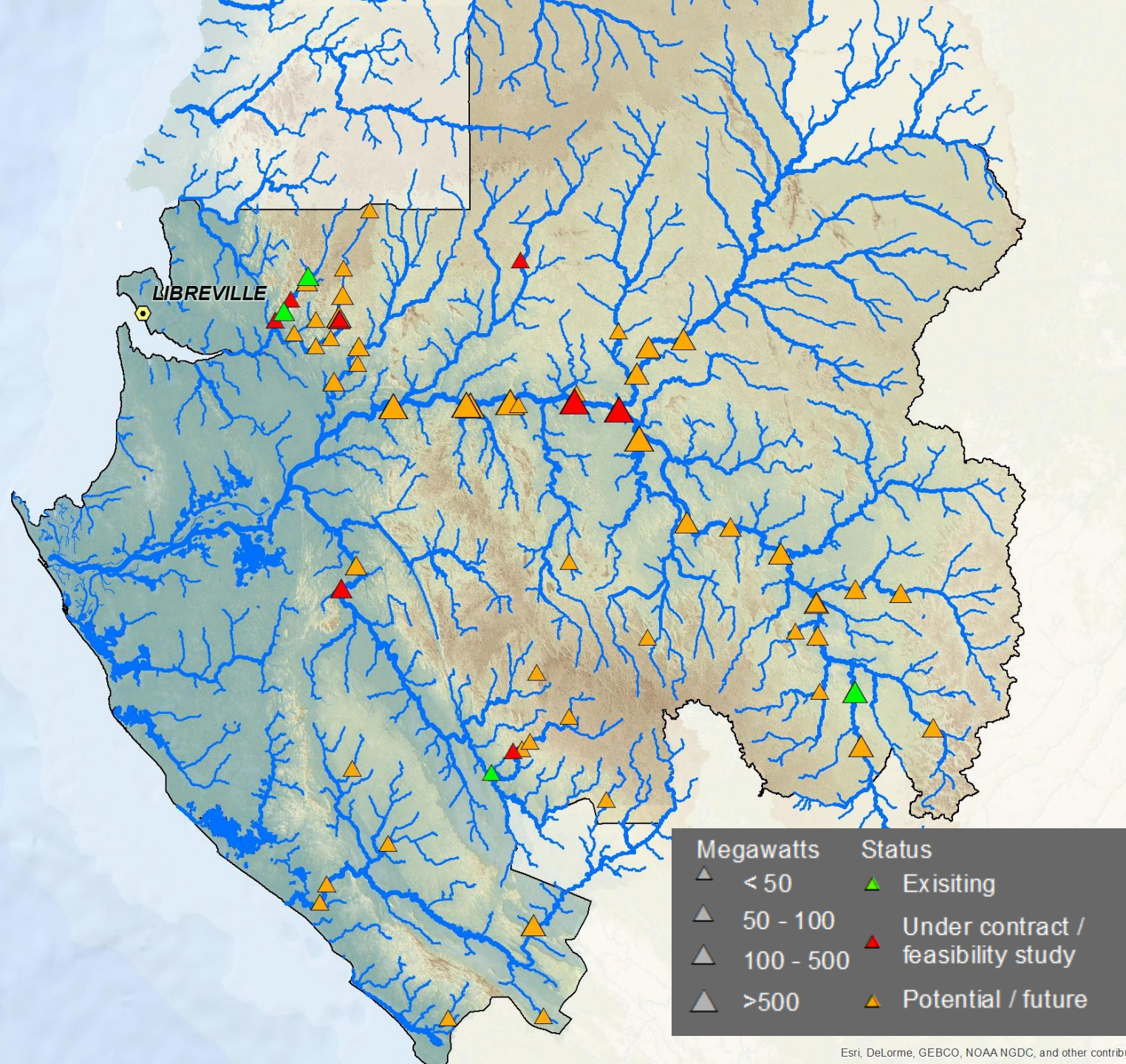


Setting and measuring progress towards shared goals

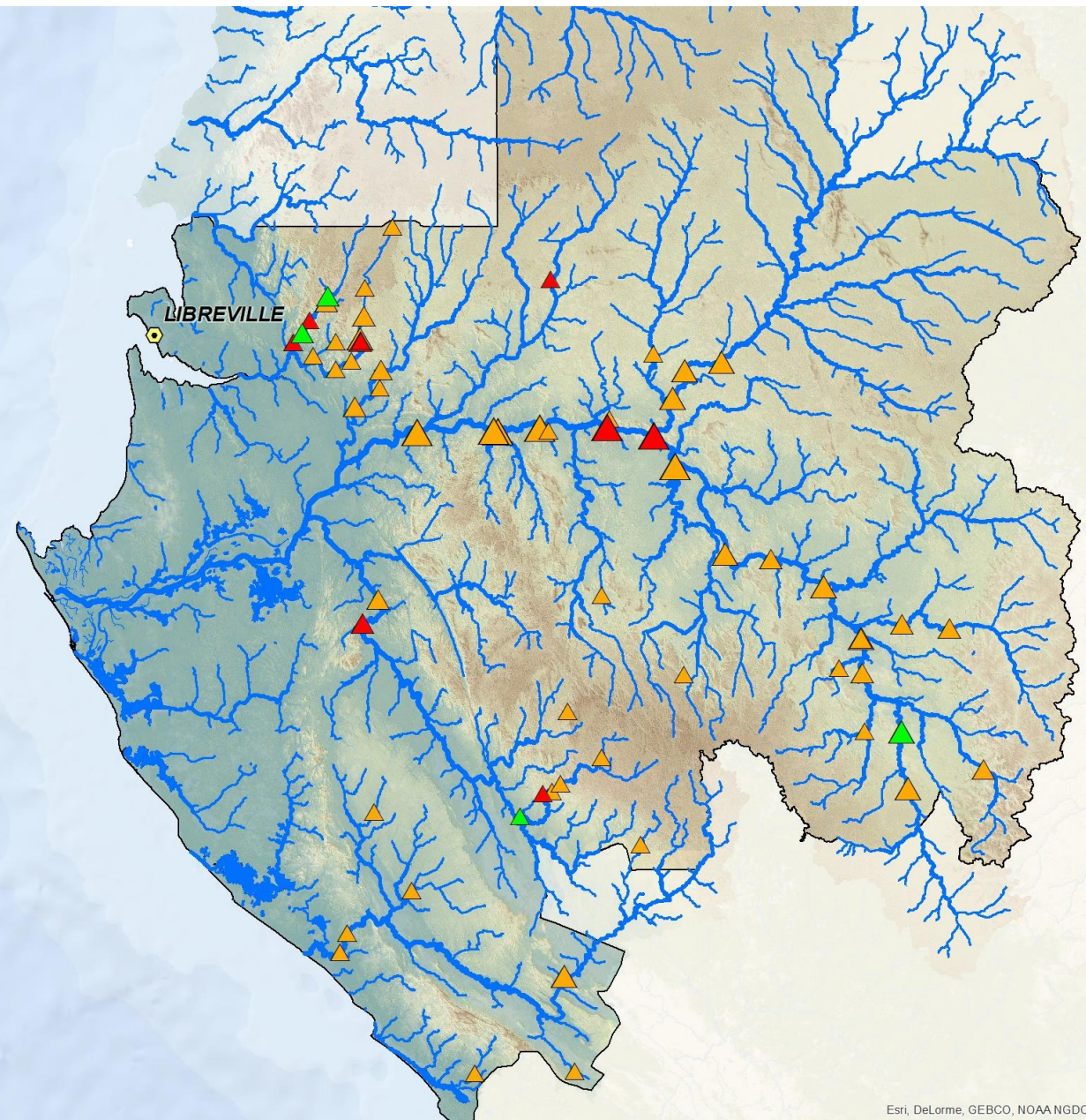


Pursuing unexpected collaborations

Powering Gabon's Future

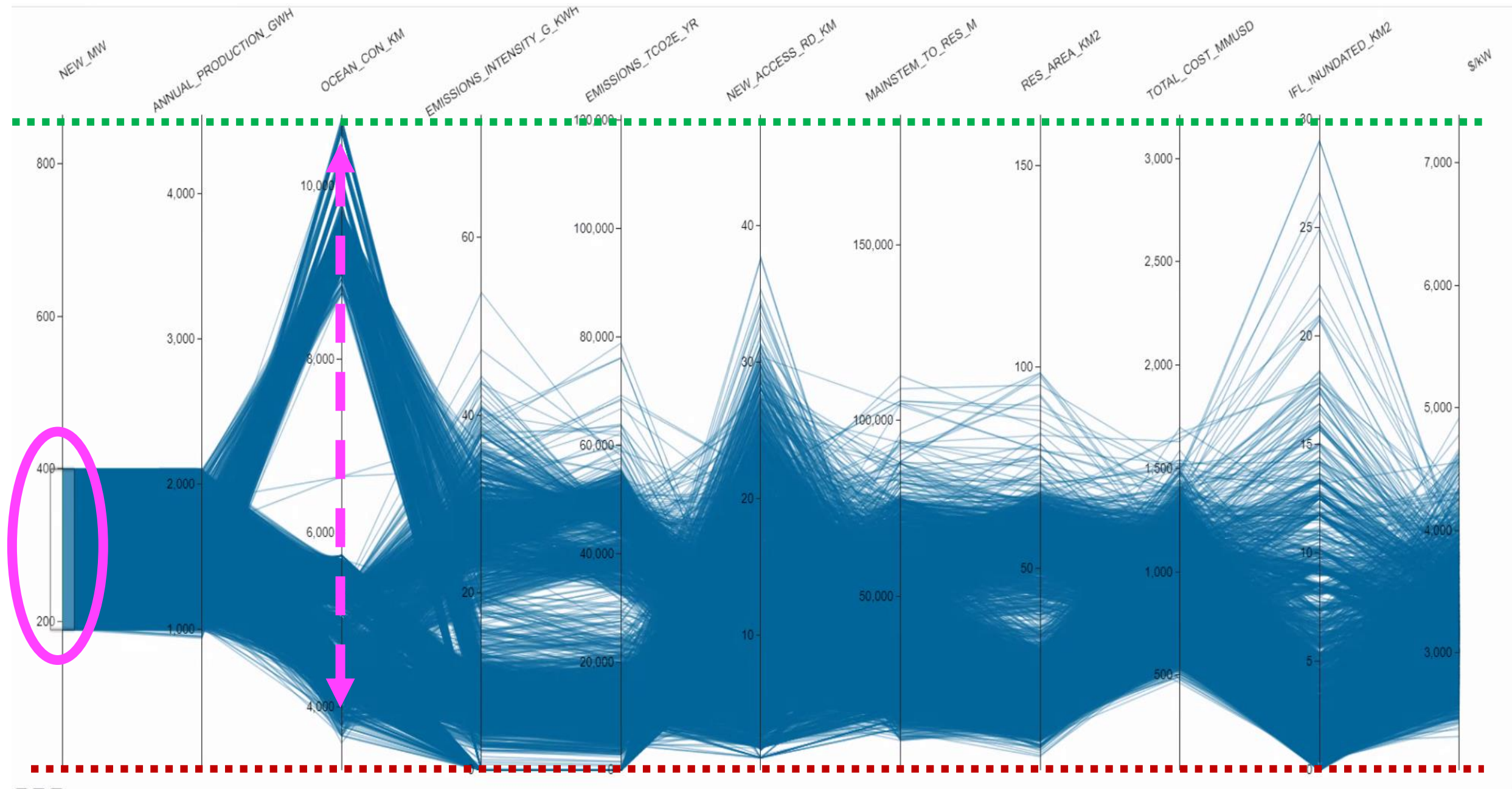


- 
- Ministry of Energy
 - Ministry of Environment
 - National Parks Agency
 - Fisheries Agency
 - National Public Investment Fund
 - National Planning Agency
 - National Climate Council

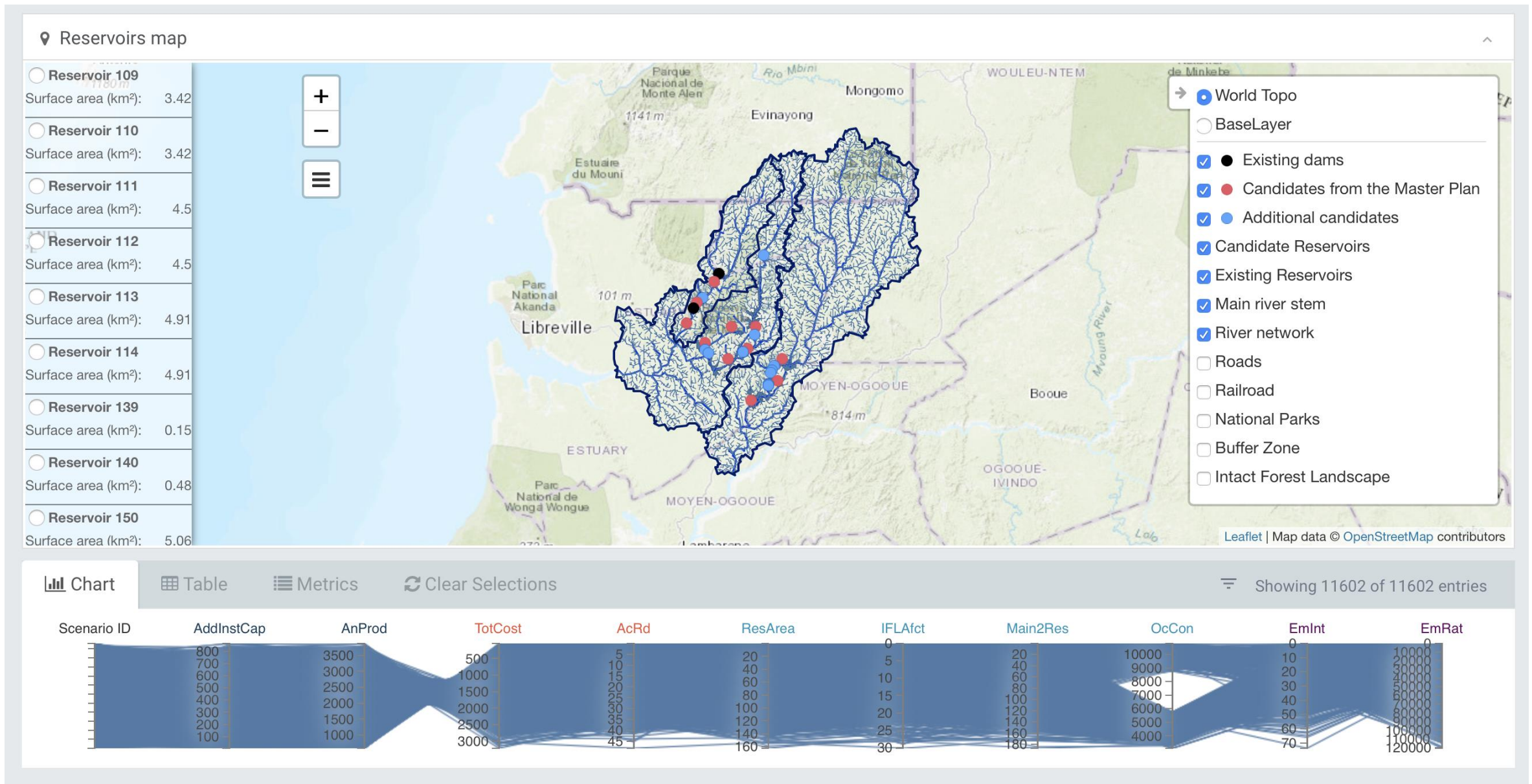


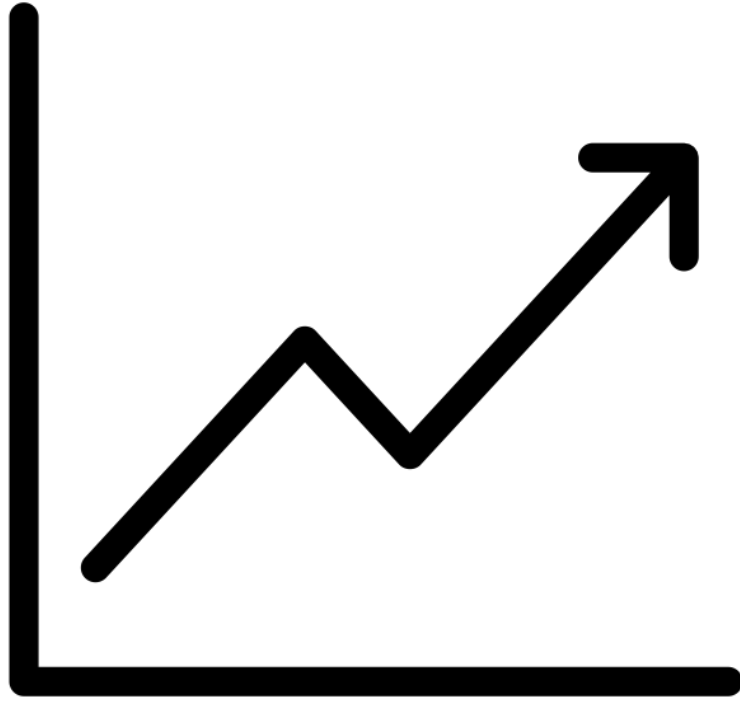
Multi-objective Planning

- Energy production
- River connectivity and flows
- Greenhouse gas emissions
- People resettled
- Financial cost
- Impacts to forestry concessions
- Impacts to national park
- *And others (including some that couldn't be modeled)*



Enabling Stakeholders to Explore Scenarios





**Setting and measuring
progress towards
shared goals**

- Are all interests fairly represented in the shared goal and metrics?
- Do we have a structured way to look at synergies and tradeoffs across all metrics?
- In exploring solutions, are there flexibilities with *what happens where* that can help us achieve more, without unduly harming some?

Achieving More Together: 3 *Helpful Ingredients*



Defining the 'right' shared problem to solve



Setting and measuring progress towards shared goals



Pursuing unexpected collaborations

Historic Levels of Forced Displacement

- 70.8 million forcibly displaced persons worldwide
- 10+ years being displaced



Rohingya Refugee Camps: Cox's Bazar, Bangladesh



Influx of >900,000 refugees

Basic needs: food, water, energy, shelter

Supporting long-term displacement

Mounting environmental pressures

- Water pollution and groundwater depletion
- Asian elephant corridor
- Deforestation
- Natural disasters

Rohingya Refugee Camps: Cox's Bazar, Bangladesh



Can better linkages in the field between humanitarian and environmental efforts create a better way forward?

Creating Opportunities for Rohingya Refugees and Hosts Through Forest Landscape Restoration



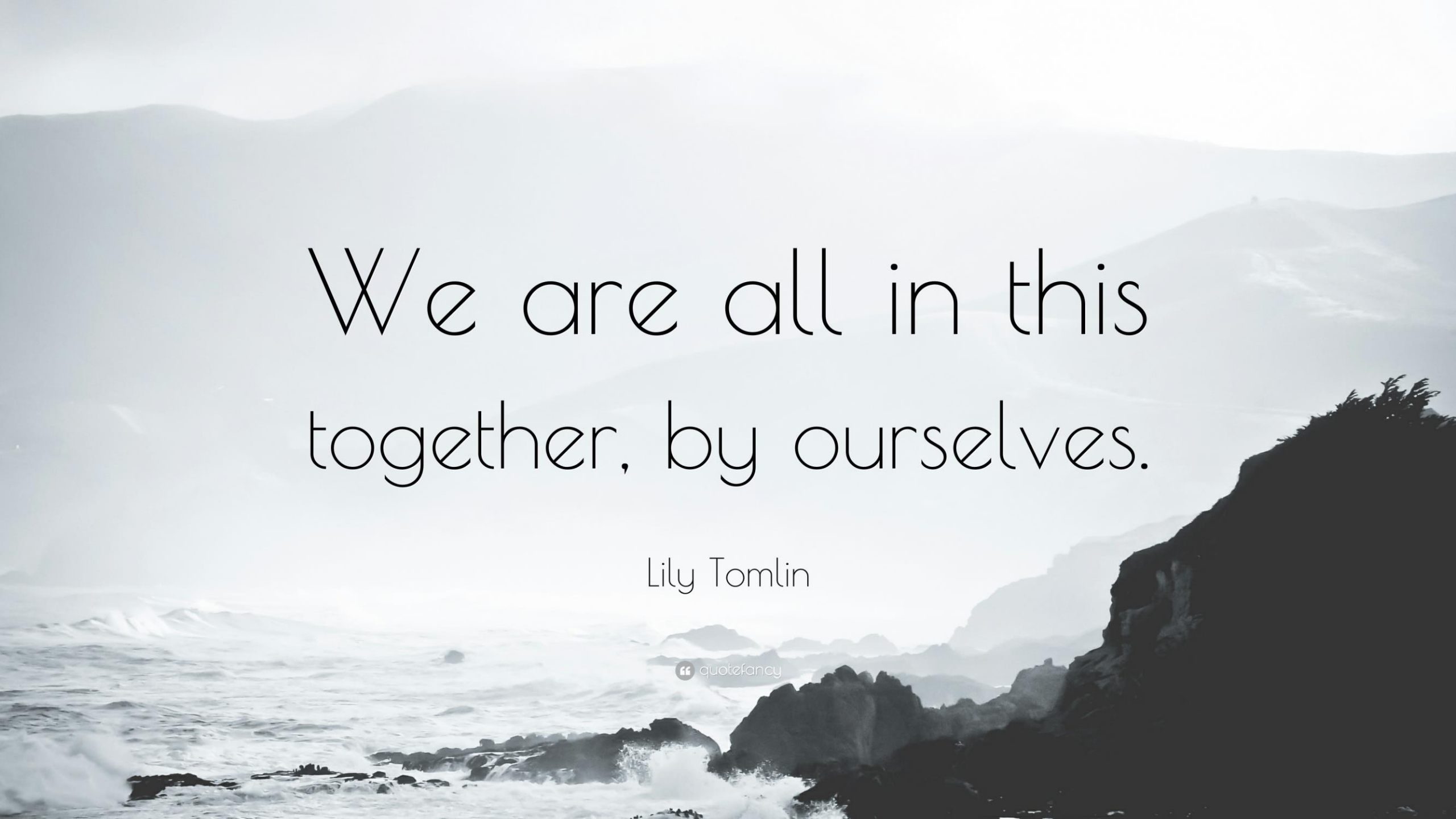
Example Recommendations

- Build local capacity for reforestation and expand employment opportunities
- Shift away from non-native species that fall down when a cyclone hits
- From getting trees planted to ensuring they survive and grow well
- Accelerate reforestation efforts through climate change commitments and funding?



**Pursuing unexpected
collaborations**

- Are we thinking broadly enough about which groups and sectors are integral to solving the problems we're facing?
- Are there existing groups that we need to rethink how we engage with them constructively?



We are all in this
together, by ourselves.

Lily Tomlin

“ quote fancy ”

Achieving More Together

- Walk in other people's shoes to help define the 'right' problem to solve
- Help set a shared 'north star' to measure success, and be flexible with how to get there
- Be willing to redefine your comfort zone to engage 'strange', 'unexpected' partners





Thank You!