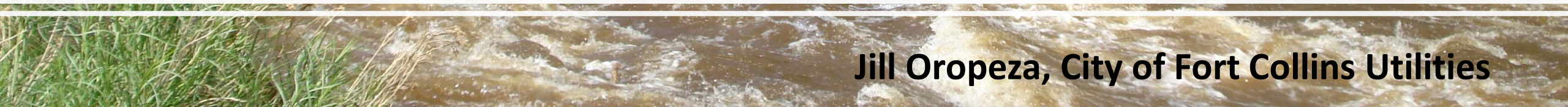




# Municipal Perspectives on Water Quality



**Jill Oropeza, City of Fort Collins Utilities**



# Objectives

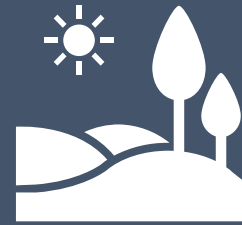
---



COMPLIANCE



QUALITY SERVICE



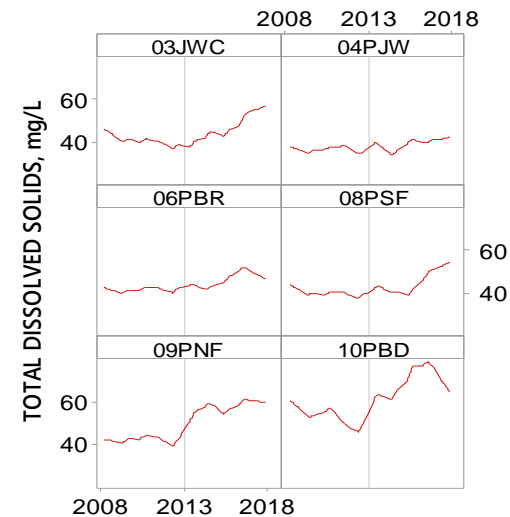
LEGACY OF  
STEWARDSHIP



# Source Water Quality

---

- Water Quality Monitoring Programs
- Watershed Protection & Restoration
- Spill Response Planning



# Drinking Water Quality

---

## **Drinking Water Treatment**

- Water Quality - Reg 11 Compliance
- AWWA Partnership for Safe Water – Treatment & Distribution
- ISO 14001, Environmental Performance

## **Distribution System Operation & Testing**

### **Drinking Water Quality Laboratory**



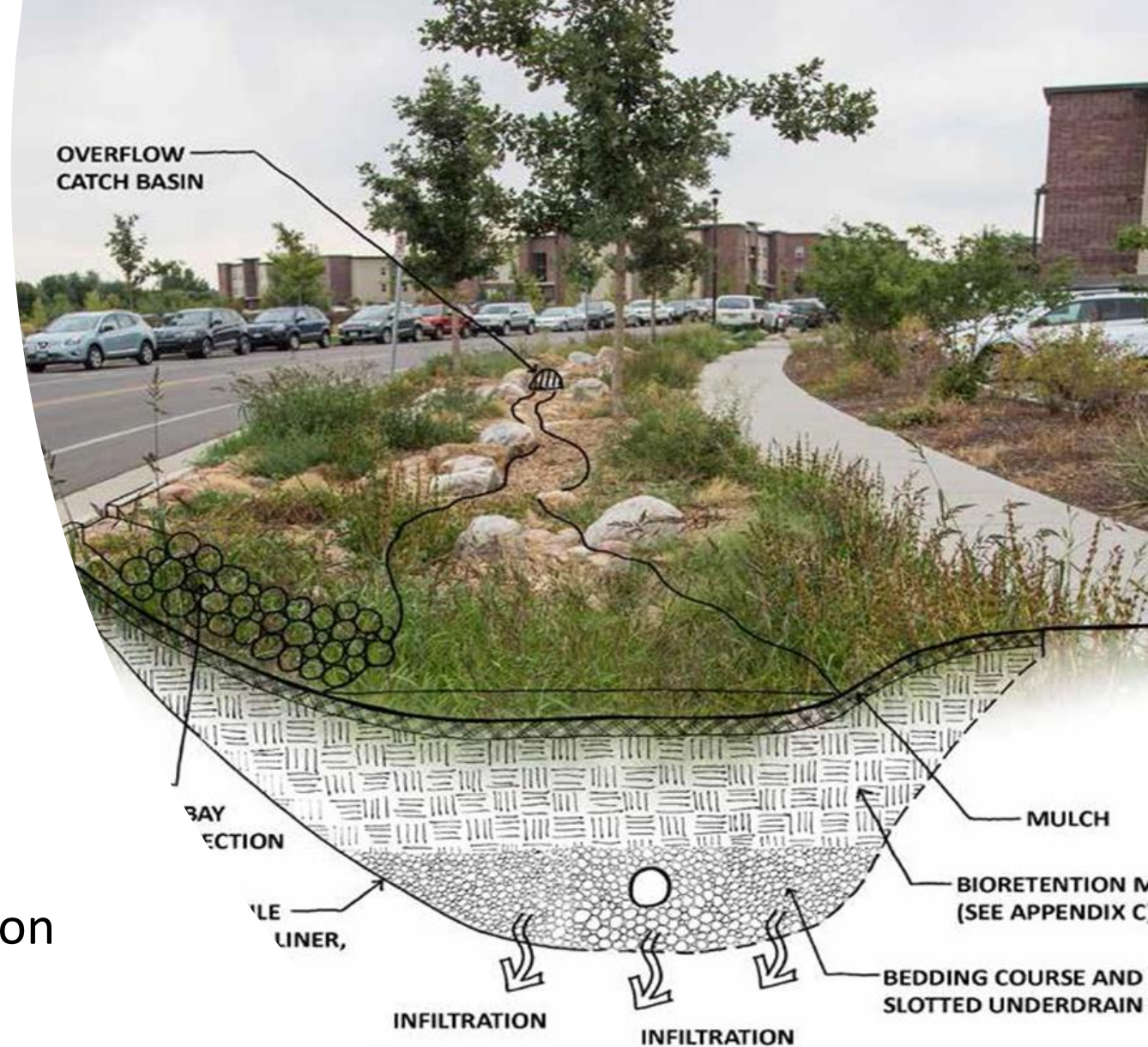


# Stormwater Quality

## Municipal Separate Storm Sewer System (MS4) Permit

- Erosion Control
- Education & Outreach
- Design Criteria / Low Impact Development
- Stormwater Management
- Illicit discharge detection & elimination

## *E. Coli* source tracking study Drainage Improvement Projects





An aerial photograph of a wastewater treatment plant. In the foreground, there are two large, circular, concrete-lined tanks filled with dark water. A metal walkway with railings runs along the edge of one of the tanks. In the background, there are several large, cylindrical storage tanks, some with white roofs and others with brown roofs. There are also some smaller buildings and a parking lot with several vehicles. The surrounding area is green with trees and grass. The sky is clear and blue.

# Water Reclamation

## Wastewater Treatment

- 2 facilities, 3 NPDES permits
- AWWA Partnership for Clean Water
- ISO 14001, Environmental Performance

## Industrial Pre-Treatment Program

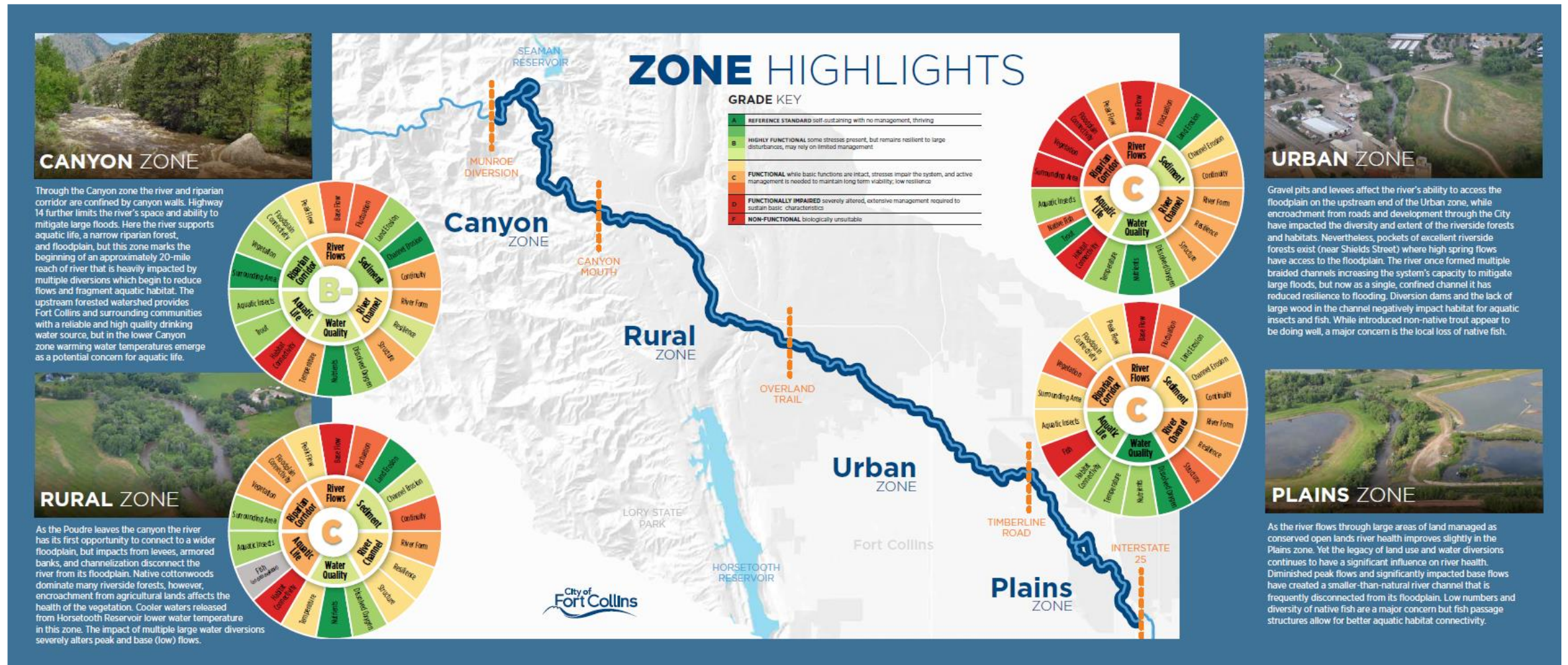
Lower Poudre River Monitoring  
Alliance (LPRMA) member

Pollution Control Laboratory

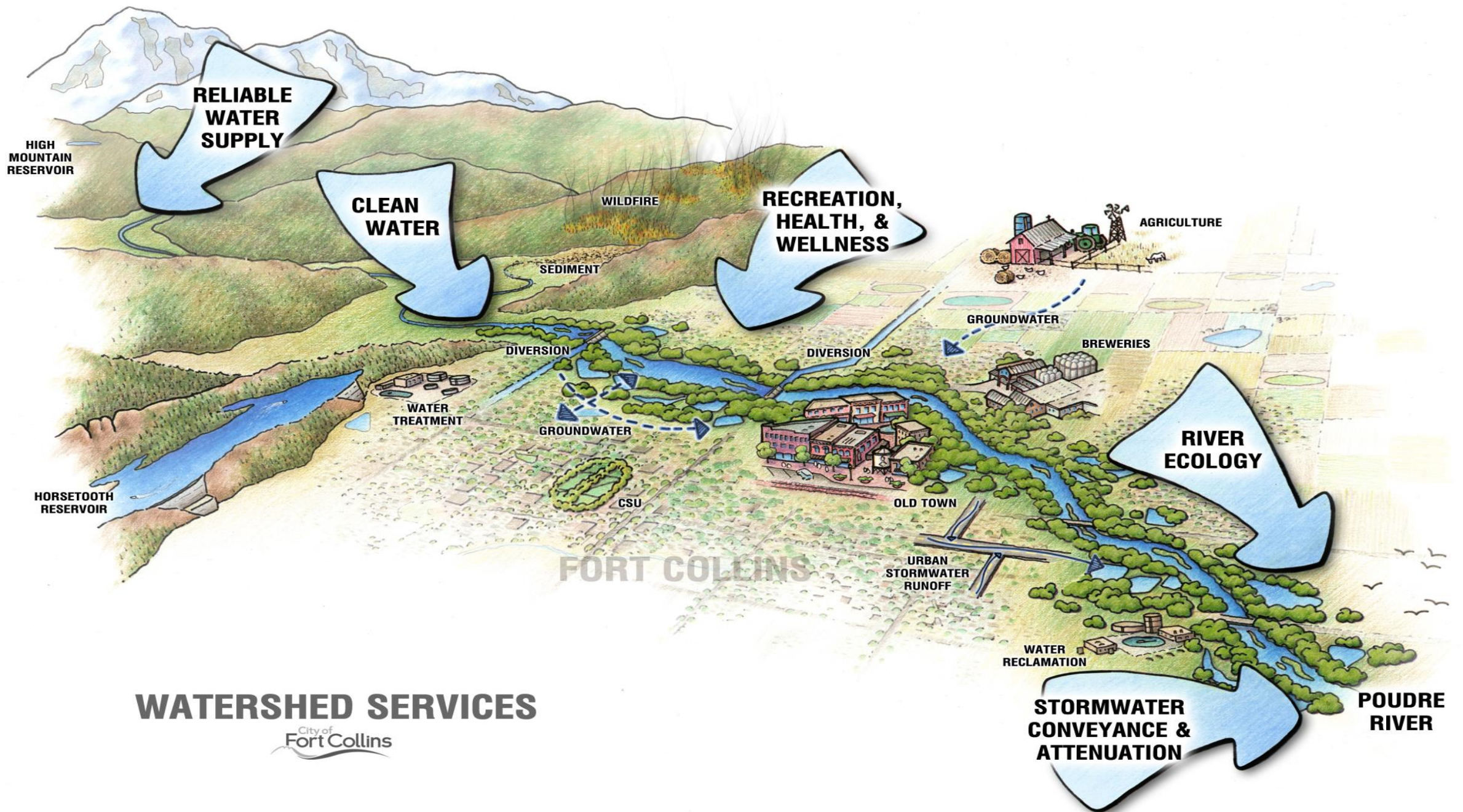


# State of the Poudre River, A River Health Assessment

## Evaluates water quality along with other key indicators of river health









# Collaboration

- Multiple Water Supply Projects
- Shared and equal access to data and information
- Competing objectives
- Emerging Contaminants
- Regulations
- Extreme weather events (Fires, floods, drought)



