

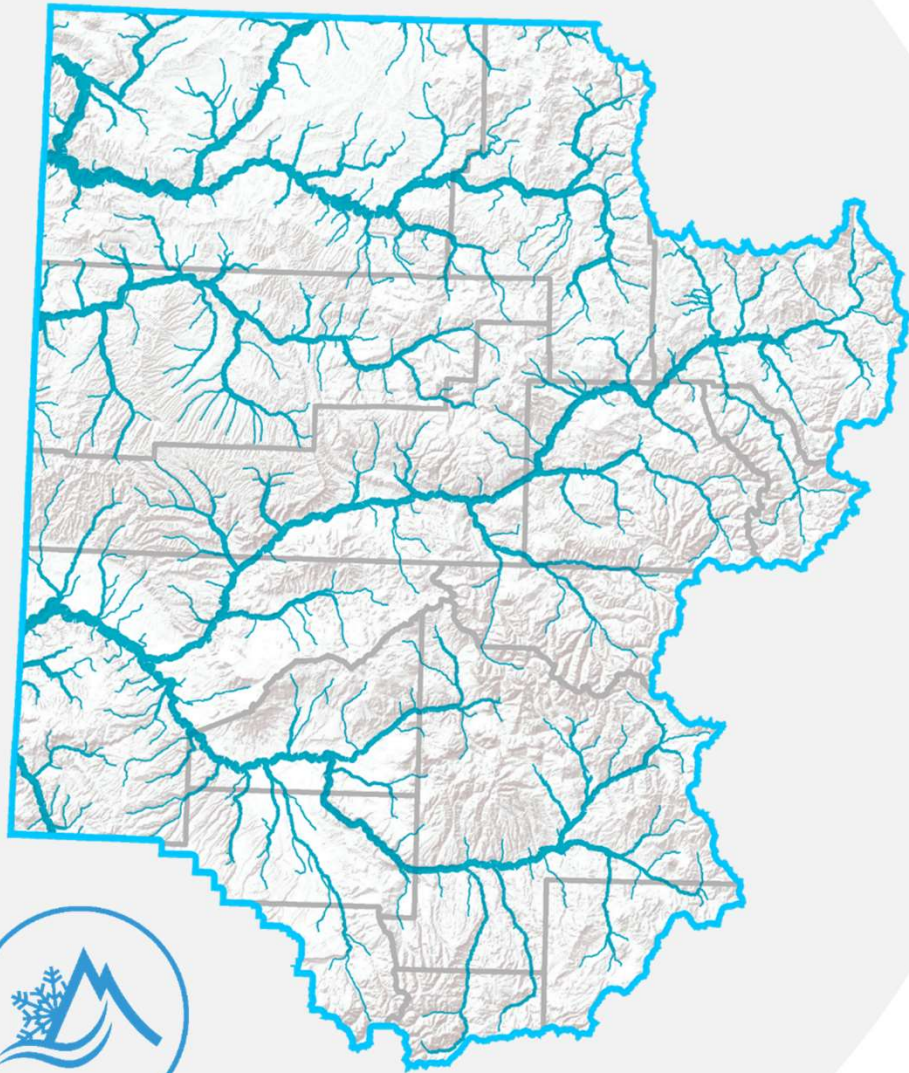


Perspectives from Colorado's Western Slope

Amy Moyer
Director of Strategic Partnerships
Colorado River District



COLORADO RIVER DISTRICT
PROTECTING WESTERN COLORADO WATER SINCE 1937



To lead in the
**protection,
conservation,
use, and
development**
of the water resources of
the Colorado River basin.



**Keeping water
flowing to farms
and ranches**



**Securing legal
protections to
keep water on
the West Slope**

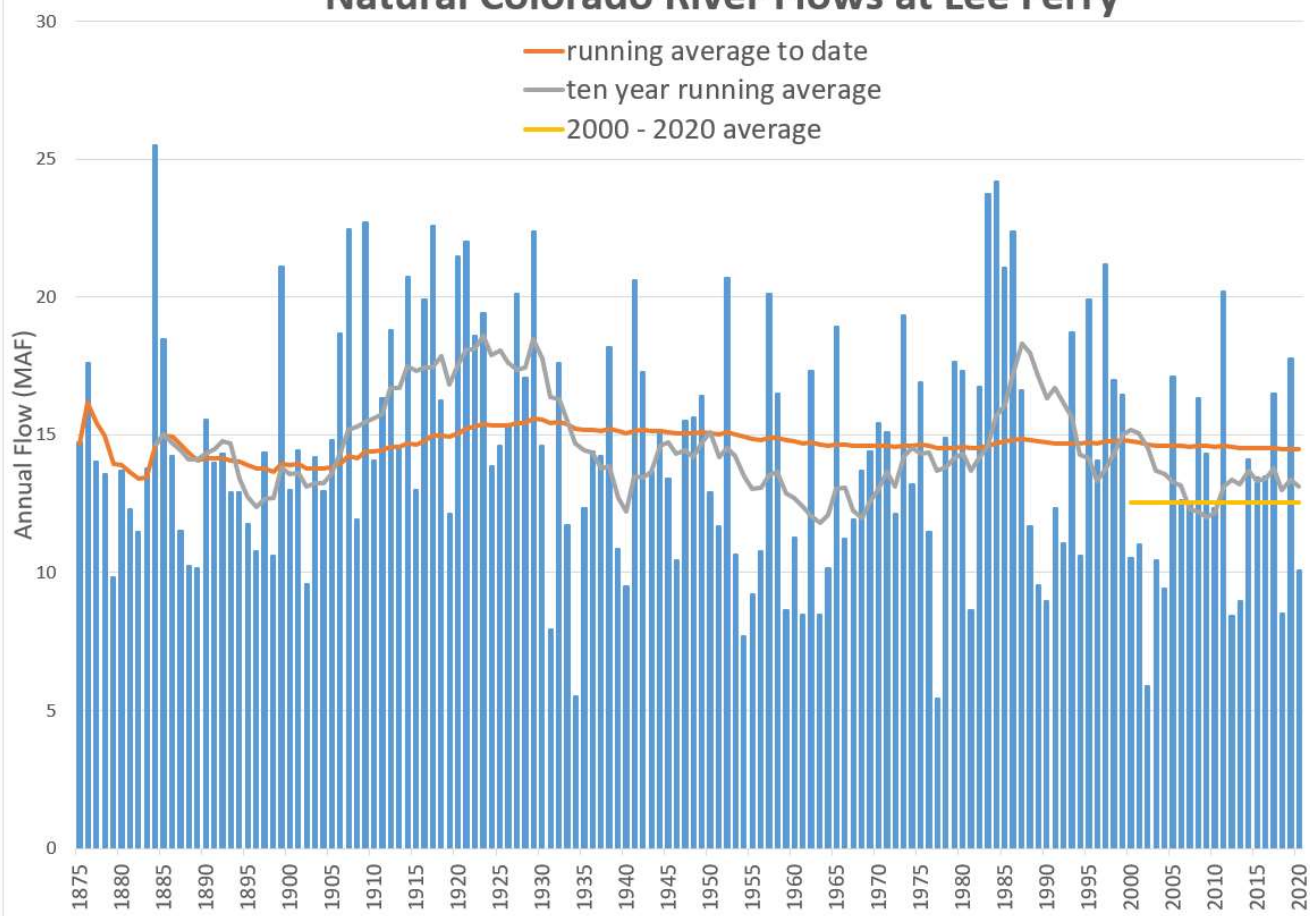


**Maintaining
healthy rivers**



**Ensuring
adequate
drinking water
supplies**

Natural Colorado River Flows at Lee Ferry

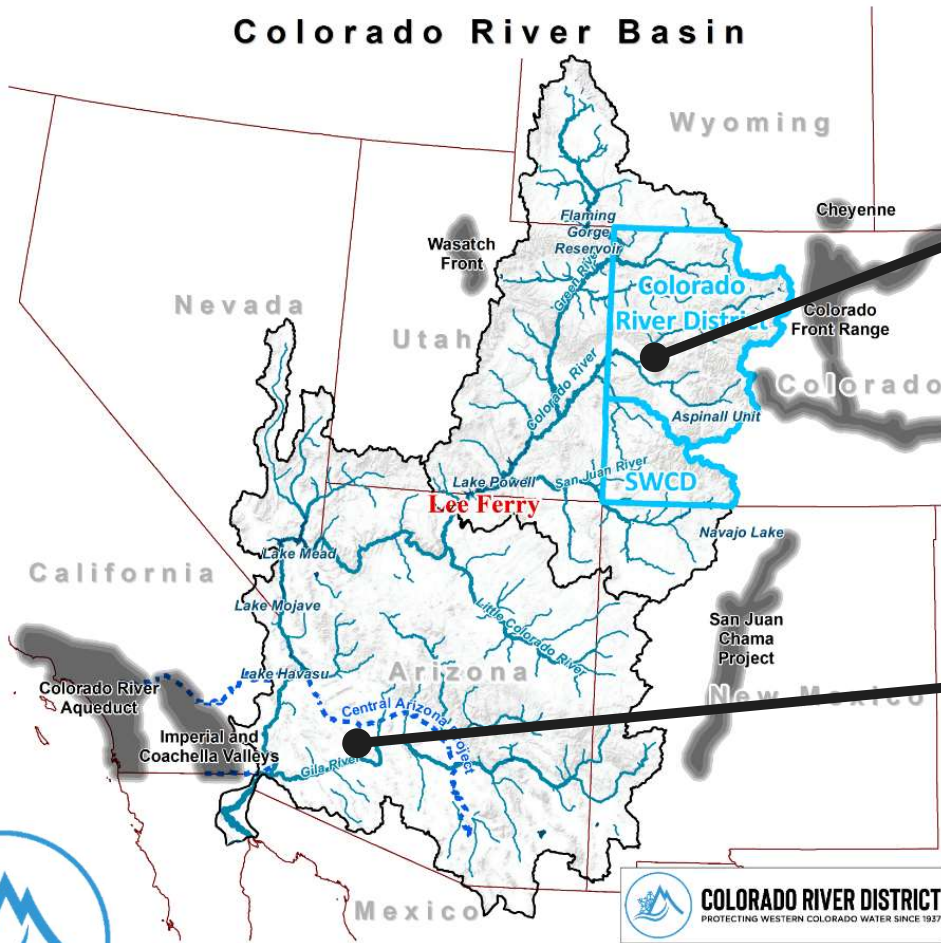


Colorado River Basin

Effective as of
September 14th, 2021



Colorado River Basin



Upper Basin (supply)

Approximately 90% of the water

Lower Basin (demand)

Approximately 90% of the people



The Colorado River mainstem: on paper

Lower Basin

7.5 million acre feet
Art. III(a) Compact allocation

1 million acre feet

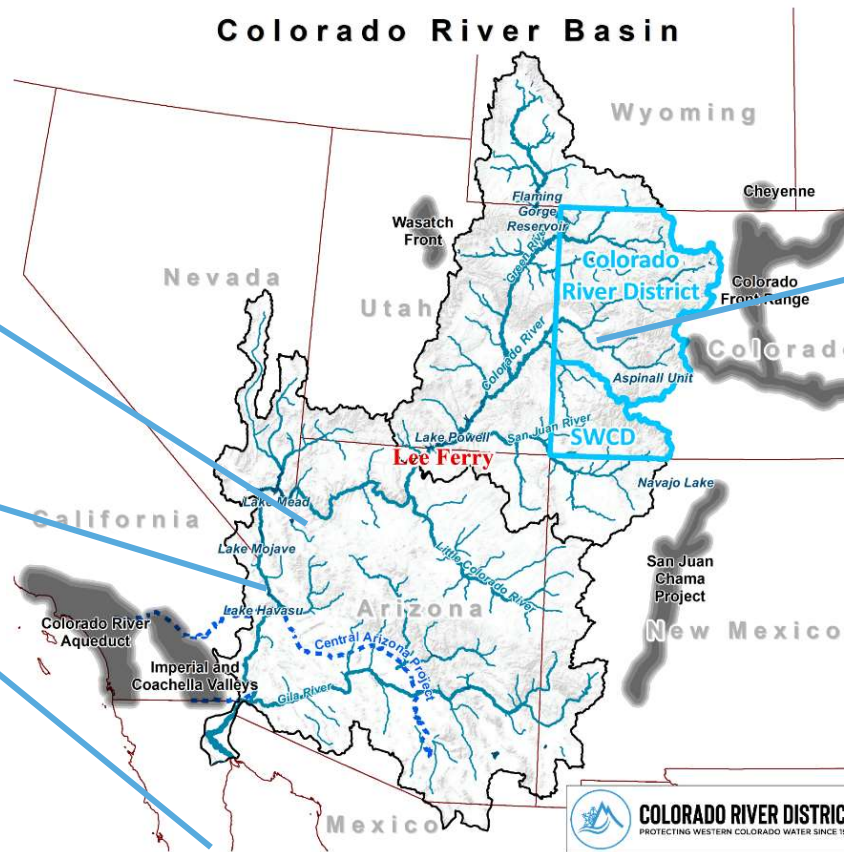
Art. III(B) Tributary use

1.5 million acre feet

Art. III (c) To Mexico

Upper Basin

7.5 million acre feet
Art. III(a) Compact allocation



acre foot = 325,851 gallons

The Colorado River mainstem: actual use

Lower Basin

7.5 million acre feet
Mainstem Uses

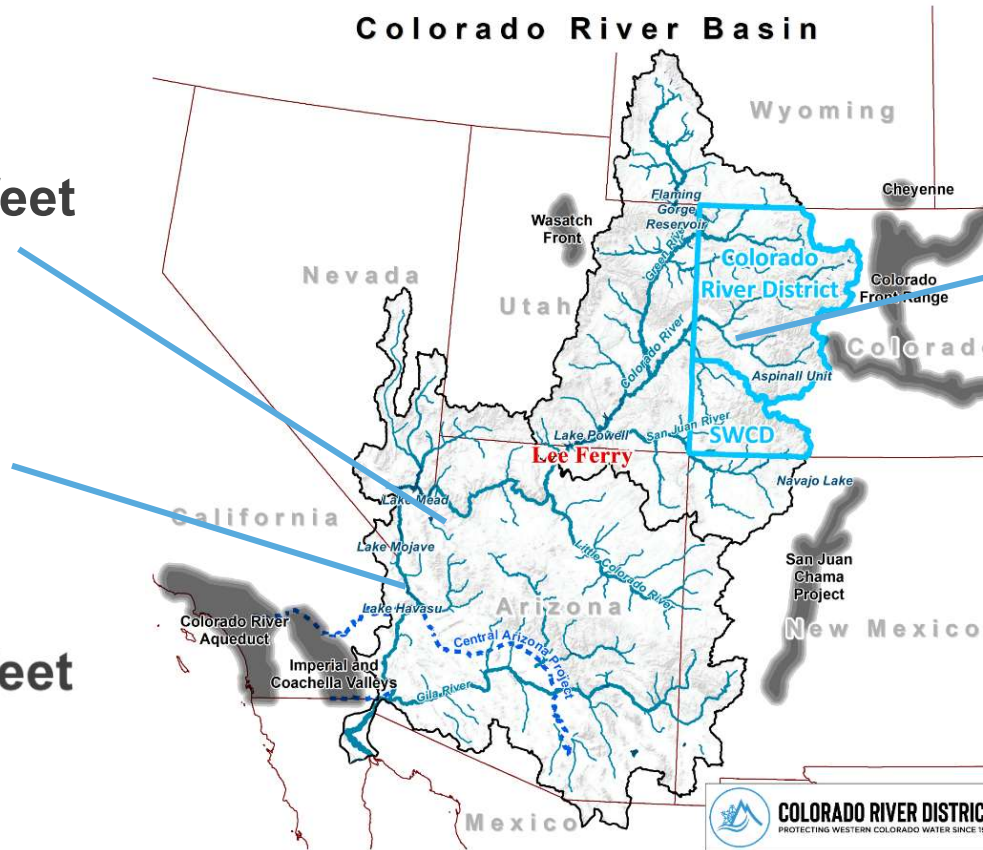
1 -1.5 MAF

Reservoir Evaporation

2.0 – 2.5 MAF

Tributaries

1.5 million acre feet
To Mexico

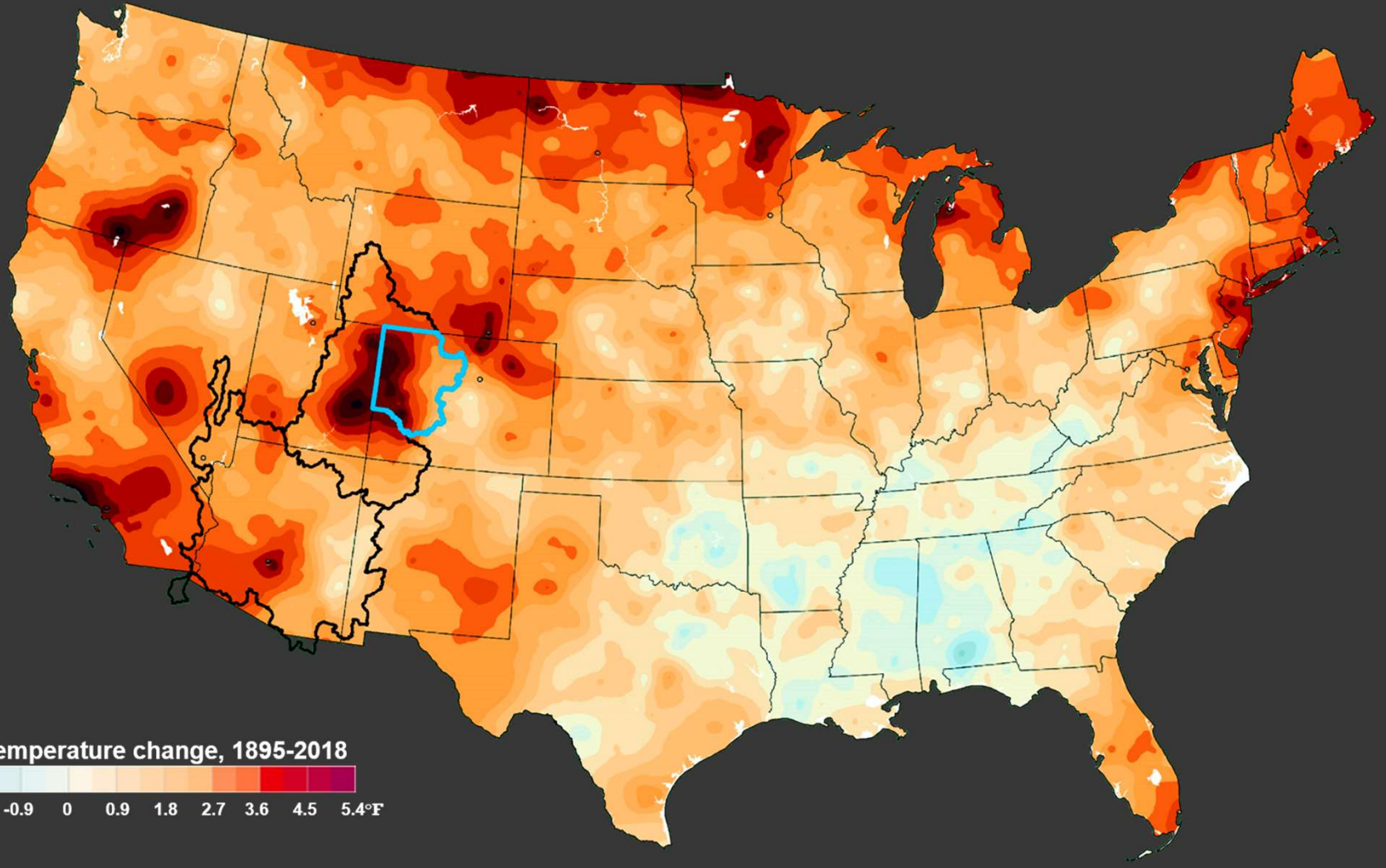


Upper Basin

4.0 - 4.5 MAF

Compact allocation

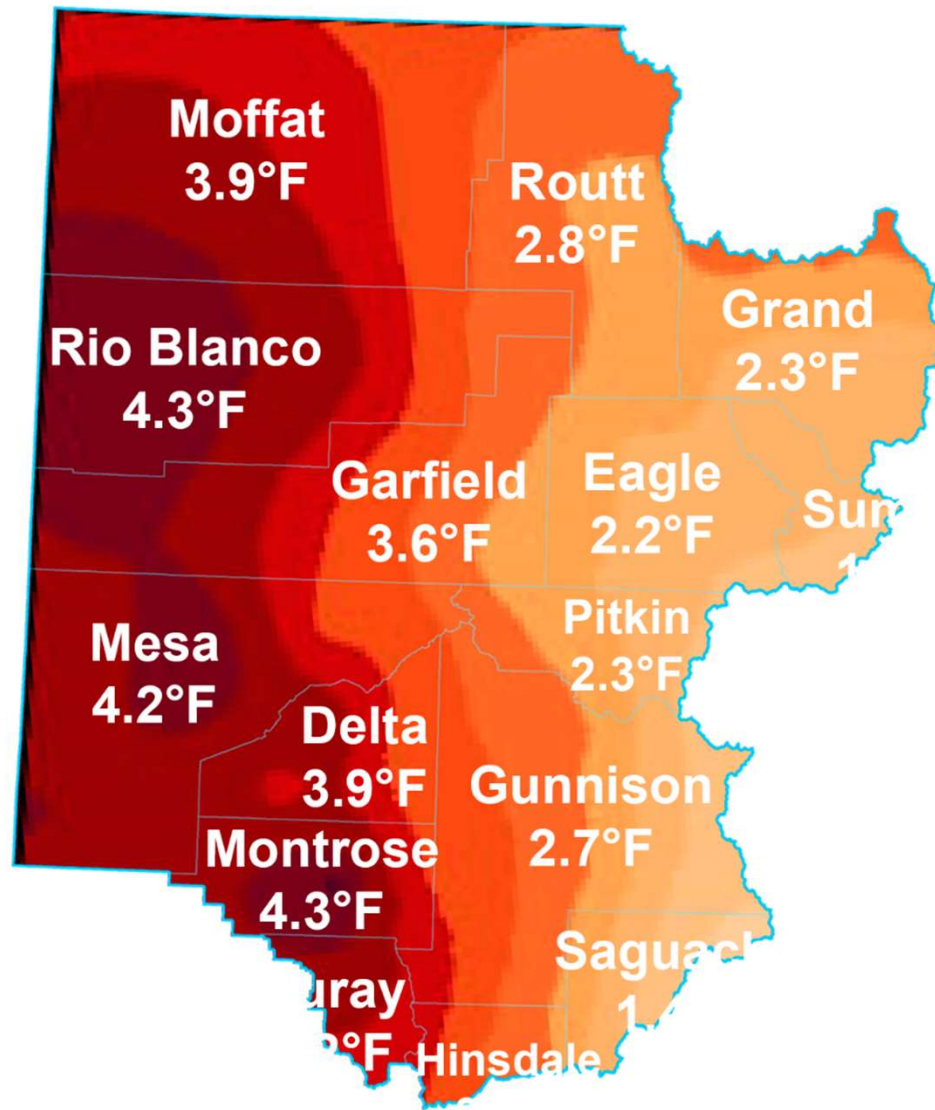
acre foot = 325,851 gallons



Temperature change, 1895-2018



Temperature data generated by NOAA
Temperature graphic courtesy the Washington Post





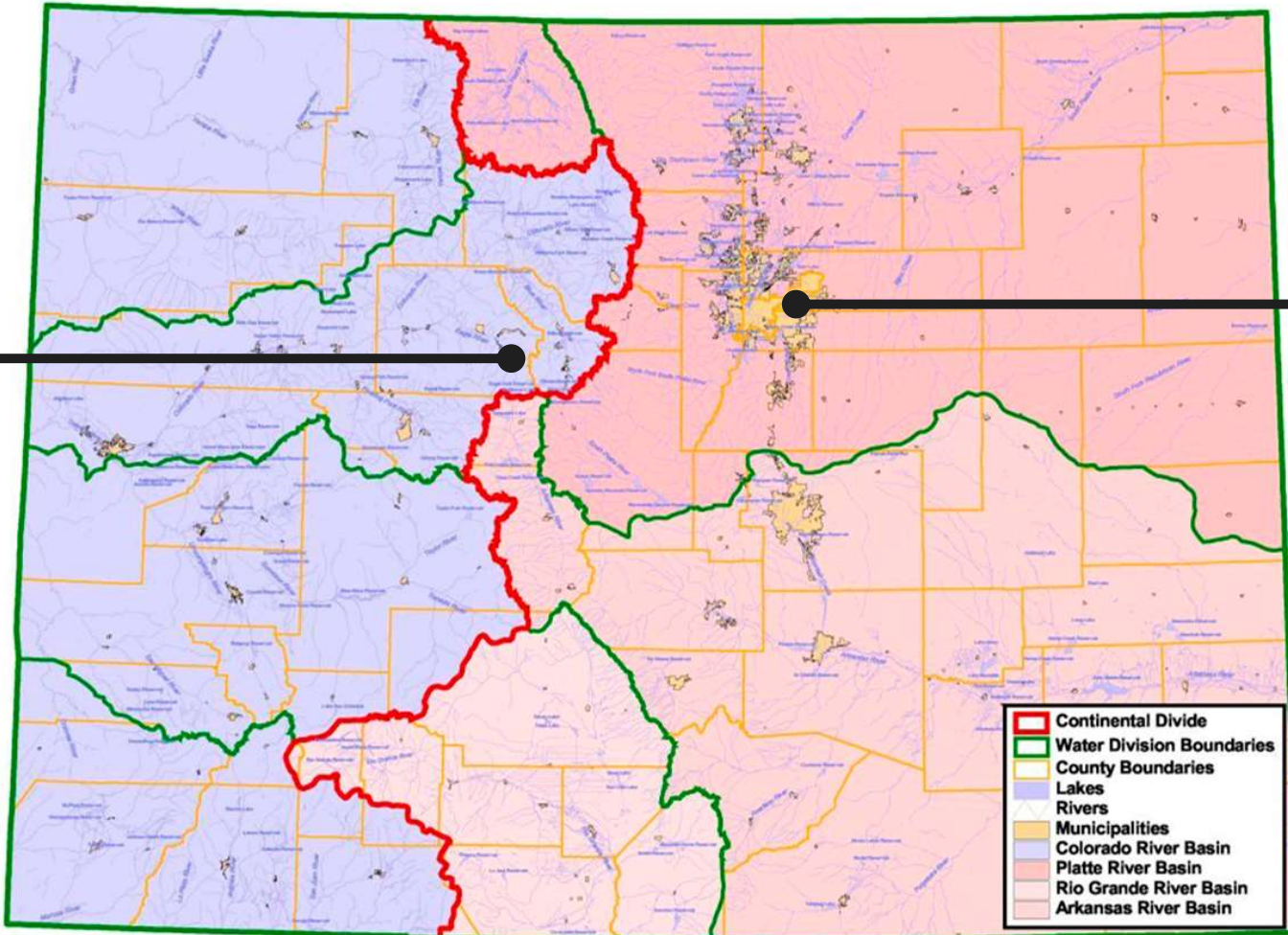
For every 1 degree Fahrenheit rise in temperature, streamflow is reduced between 3% to 8%.



Data:
How Warming Drives Reductions in Streamflow Berghuijs et al. (2014), Barnhart et al. (2016), Deems et al. (2013)
Colorado River flow dwindles as warming-driven loss of reflective snow energizes evaporation (P. C. D. Milly, K. A. Dunne, Science 2020)



More than
80% of
water



More than
80% of
population





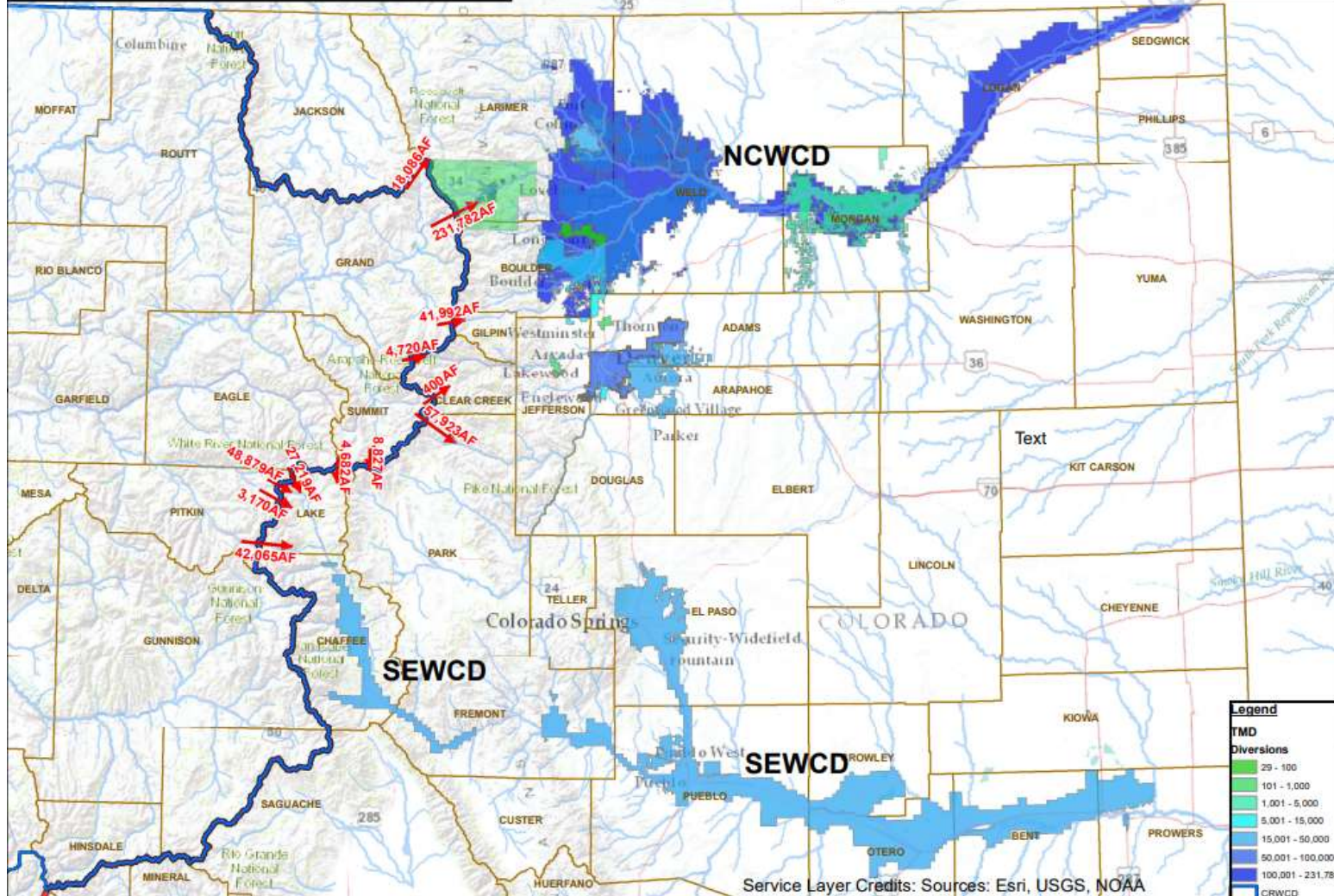
COLORADO RIVER DISTRICT

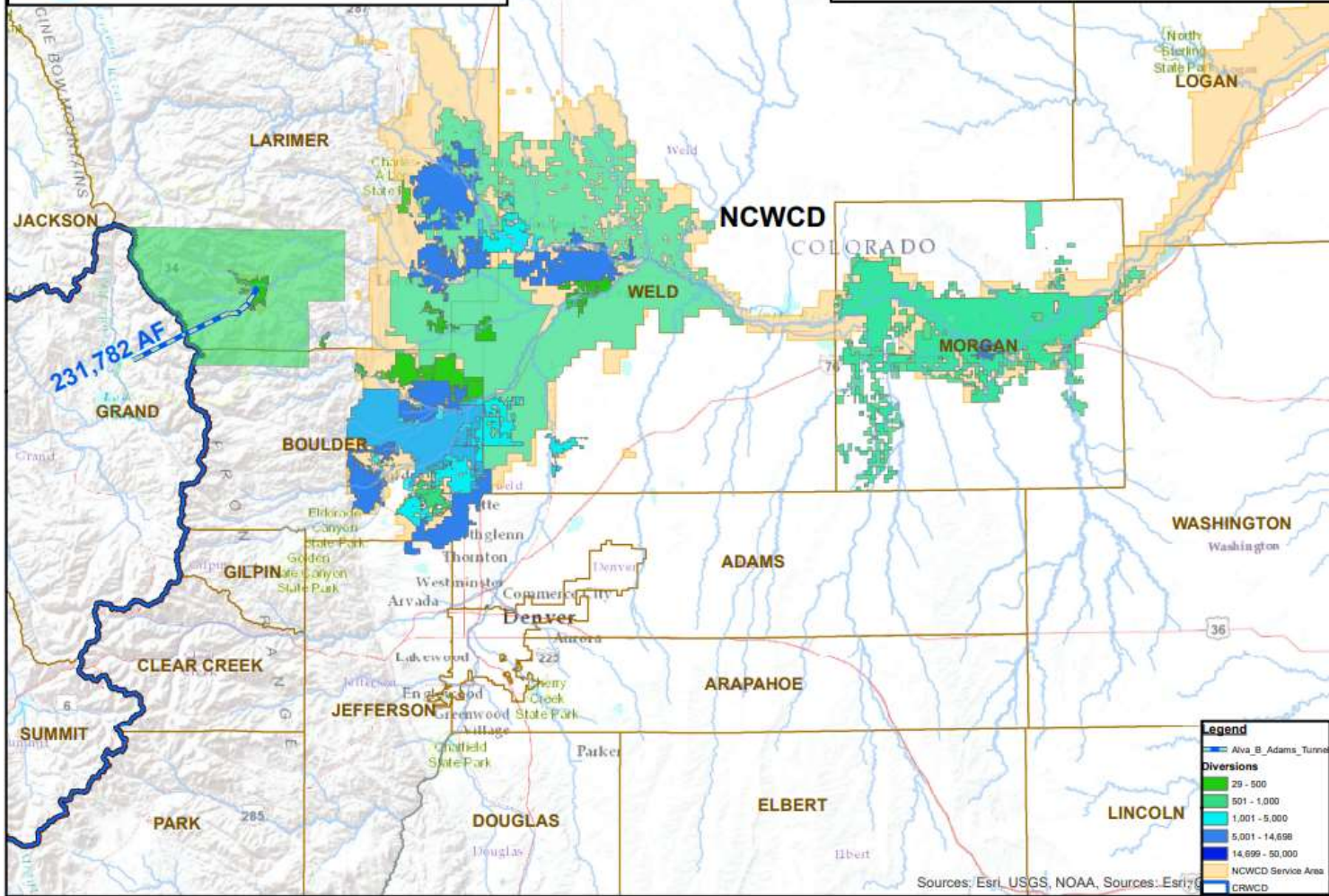
PROTECTING WESTERN COLORADO WATER SINCE 1937

Cheyenne



Front Range TMD Use

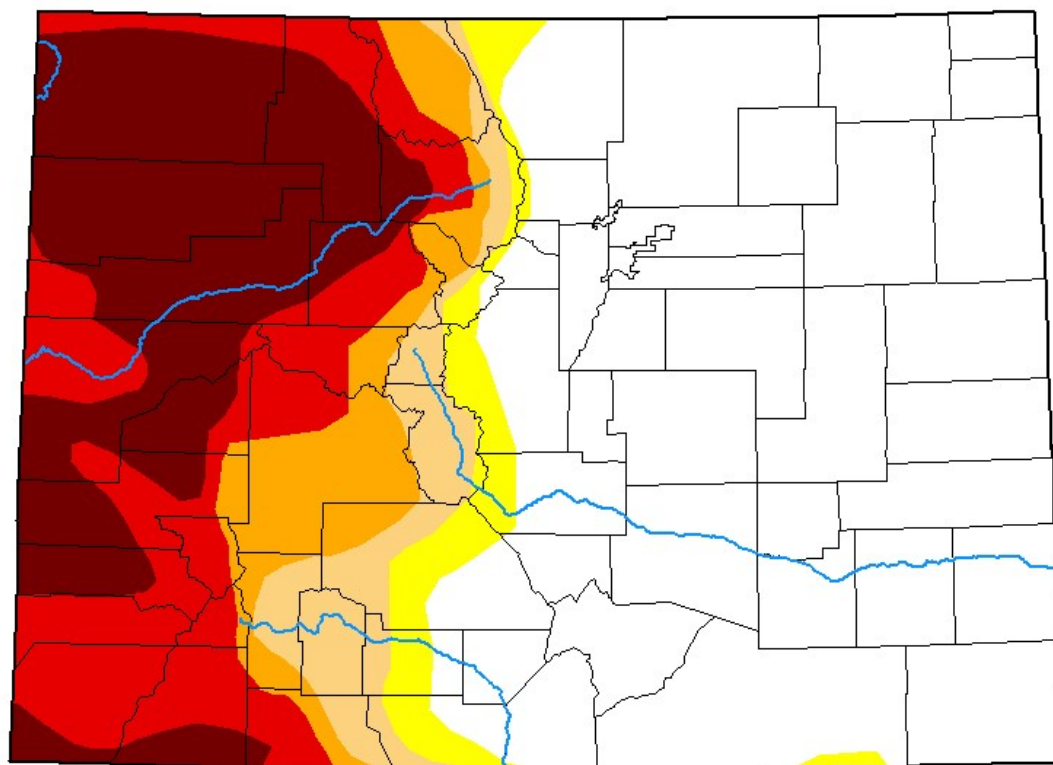




Sources: Esri, USGS, NOAA, Sources: Esri, NOAA

U.S. Drought Monitor

June 22, 2021





High-impact projects and investments for West Slope water

\$4.2 million annually





Productive agriculture



Conservation and efficiency



Healthy rivers



Watershed health and water quality



Infrastructure





What does water mean to you?



Love of the Land

The river is everything to me .. I love the Gunnison River

Whether it's eating a local hamburger, to turning your faucet on, to running a stretch of the river – everyone is connected to water.

This is my home.



The river is the lifeblood of our community. It's what makes our communities special.



What do you want people to know about West Slope water?



There's not enough – remember that our water is over-allocated

Talk to your neighbors – build your community

Be a part of the conversation

Demystify agriculture – we all eat food.

Talk to the fishing guide, stop in your local outfitter, ask questions

Ask about our stories

Respect the resource.





COLORADORIVERDISTRICT.ORG



Colorado River District



@ColoradoWater



ColoradoRiverDistrict