

# Water Literate Leaders



Open Space  
and Trails



Natural Areas  
& Trails

2/15/23

# By the Numbers

## WINDSOR

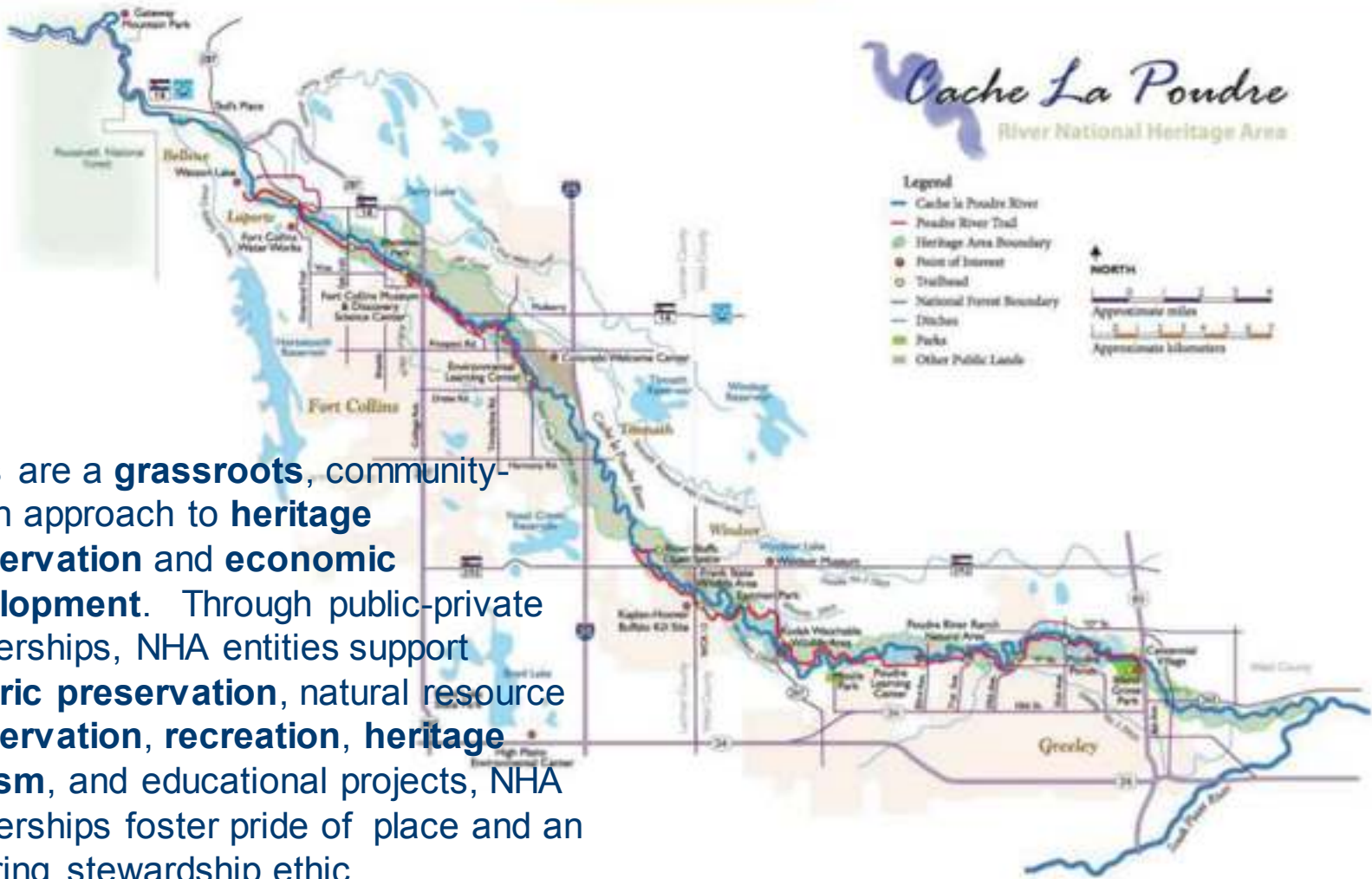
- Larimer & Weld County
- 26 sq mi
- Current pop | 40,350
- Projected buildout pop | 102,000
- 480 acres
- 52 mi off street trails
  - 9 mi Poudre Trail

## GREELEY

- Weld County seat
- 49 sq mi
- Current pop | 105,000
- Projected buildout pop | 300-400k
- 2,300 acres natural areas
- 30 mi off street trails
  - 11 mi Poudre Trail

# Water for Recreation & Business

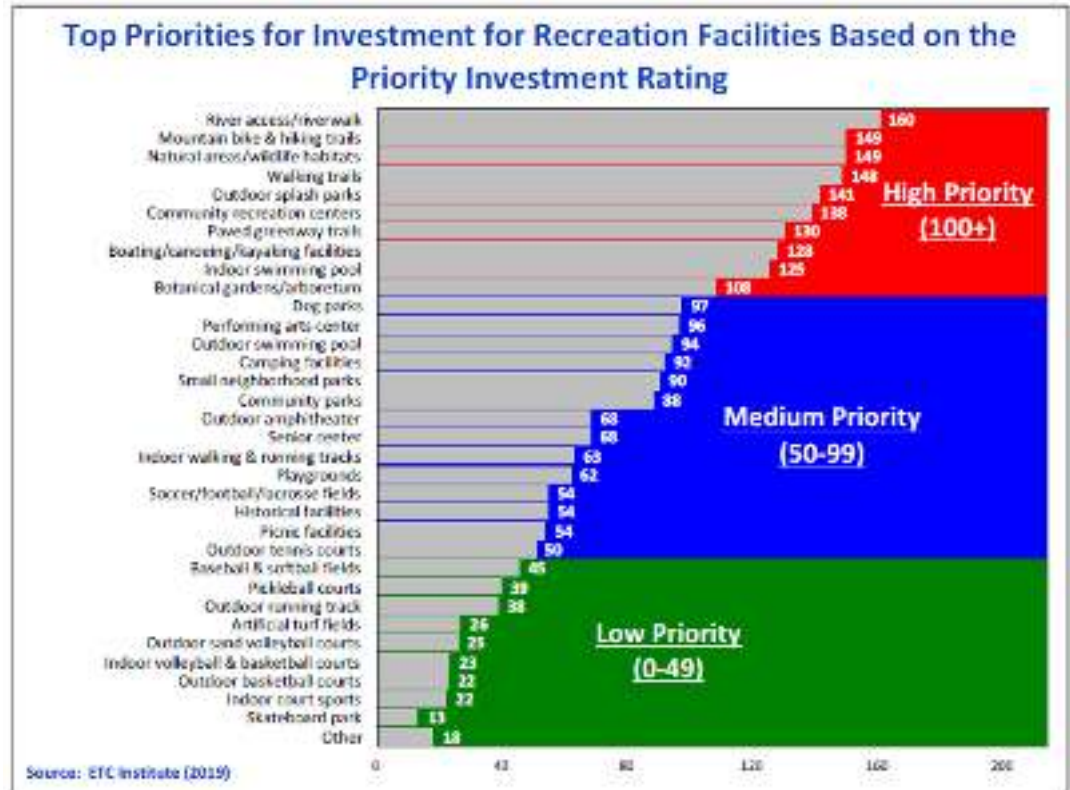
- Colorado Parks and Wildlife
- Larimer & Weld County
- Fort Collins, Timnath, Windsor & Greeley
- Poudre River Trail Corridor Board
- Great Western Trail Authority
- Northern Water
- New Cache la Poudre Irrigating Company
- Coalition for the Poudre River Watershed
- Poudre Heritage Alliance/ CALA
- Poudre Runs Through it
- Trust for Public Lands
- Great Outdoors Colorado
- North Front Range MPO
- CDOT
- Private Sector Sponsorships/ Letters of Support
- Developers



NHAs are a **grassroots**, community-driven approach to **heritage conservation** and **economic development**. Through public-private partnerships, NHA entities support **historic preservation**, natural resource **conservation**, **recreation**, **heritage tourism**, and educational projects, NHA partnerships foster pride of place and an enduring stewardship ethic.

# Priority Investments

- River Access
- MB & Hiking Trails
- Natural Areas/ Wildlife
- Walking
- Paved Greenways
- Boating/Canoeing/Kayaking



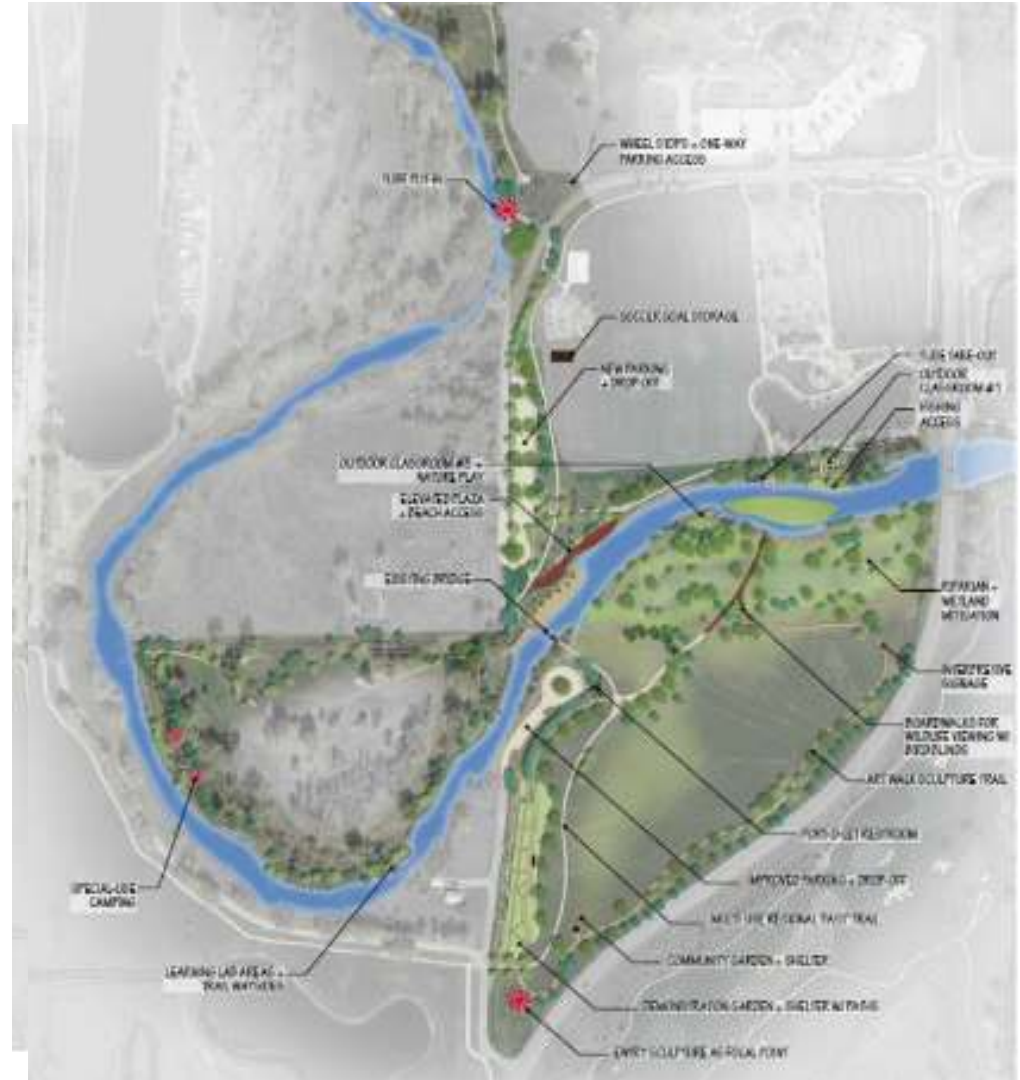
# Trail Use by the Numbers

- 2020 Trail Use Increases Exponentially

Site	Total ▼	
Eastman Park	164,067	▲ 50.3%
Boardwalk Park	145,229	▲ 65.4%
Poudre East	114,322	▲ 60.5%
#2 Ditch Trail CRC	58,715	▲ 71.0%

# EASTMAN RIVER EXPERIENCE – PH1

- Parking Capacity
- Trails / Access
- Environmental Education
- Water Access (Kayak / Canoe / Tube)
- Treasure Island Gardens
- Flood Mitigation
- Art / Camping / Fishing









# EASTMAN RIVER EXPERIENCE-PH2

- Boardwalk
- Treasure Island Demonstration
- Poudre Trail Realignment
- Nature Play Elements
- River Access



# POUDRE REGIONAL TRAIL COMPLETION

- 2023 Completion!?
- 42 Contiguous Miles





## Critical Connections

- 2.25 Miles of Trail Constructed
- 1 Bridge
- ~\$2Million

# Frank State Wildlife Area

In Process

- Continue to preserve over 324 acres of riparian habitat



# Cache la Poudre RIVER

Greeley-Windsor Reach

Collaboratively caring for the river corridor's natural resources and fostering beneficial, imaginative, and diverse forms of recreation and educational activities for residents and visitors



Letting the river be a river and flow more naturally through the corridor while ensuring the long-term protection of scenic views, habitat, and wildlife through strategic acquisitions and conservation easements



# LOWER POUDRE RIVER RECOVERY AND RESILIENCE MASTER PLAN

- Flood Mitigation
- Fish Passage
- Braiding
- Removal of structures

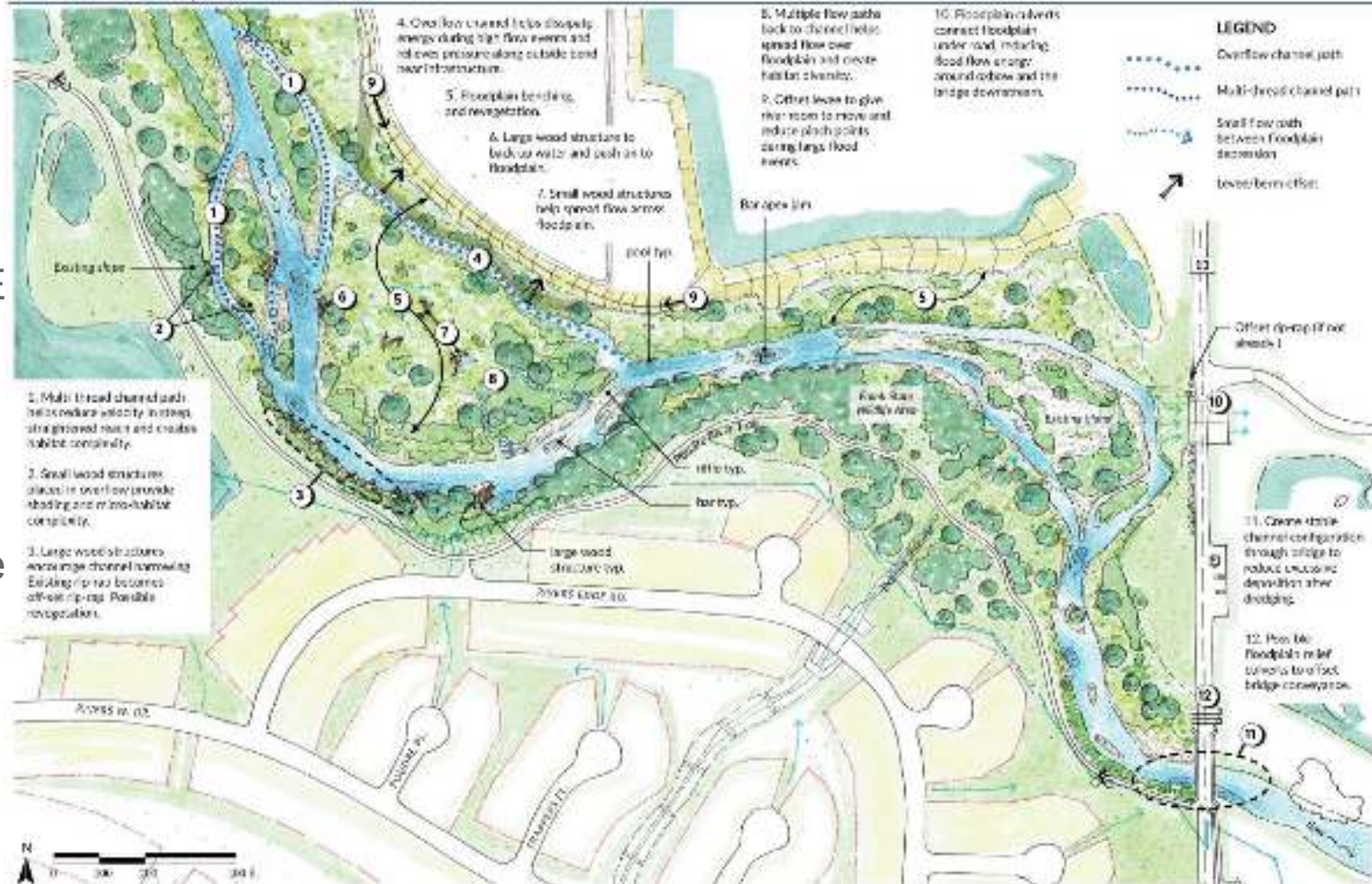
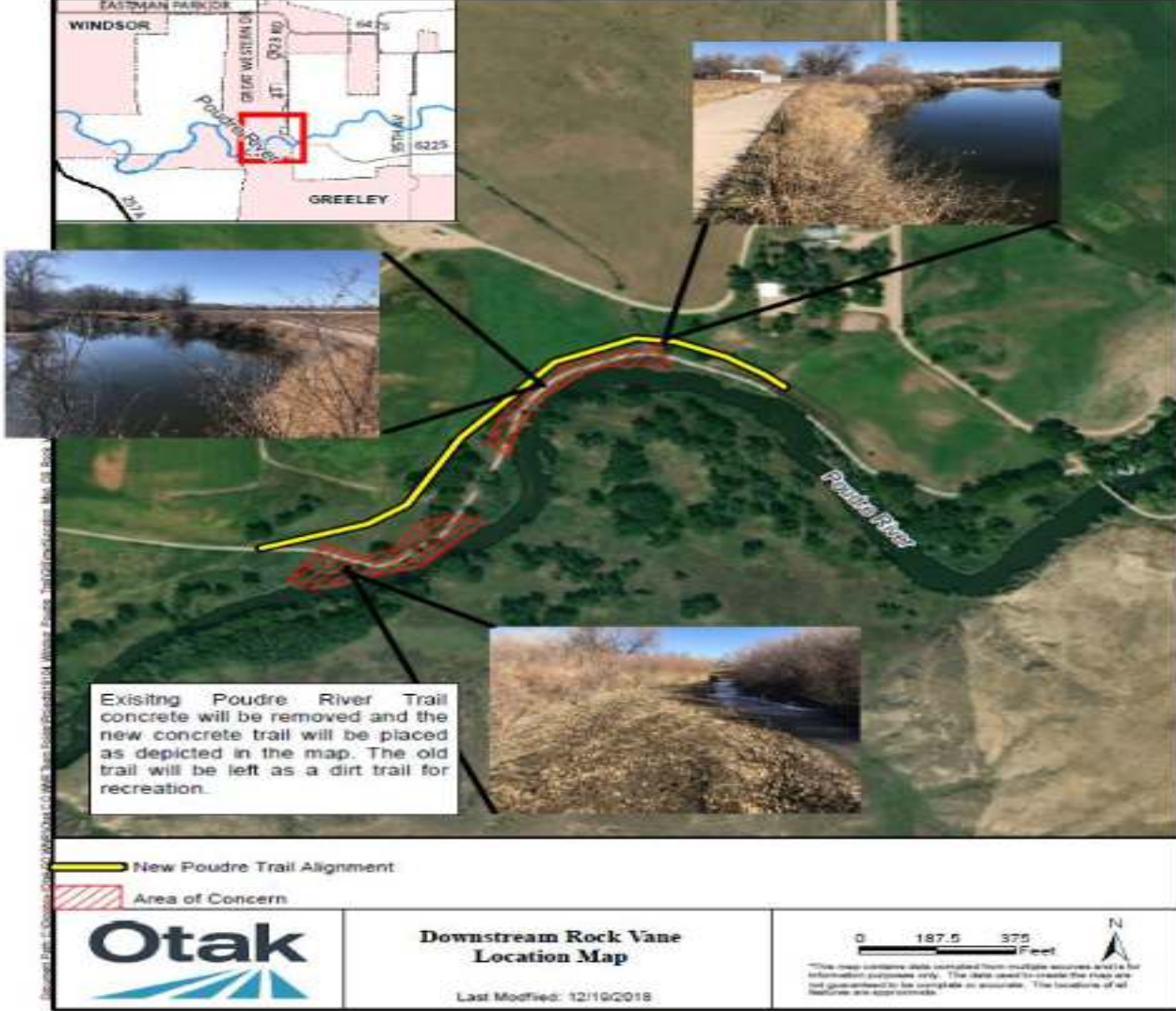


Figure 7-2: Reach 5 Concept Design  
Section 7.5: Design and Construction

# POUDRE TRAIL REALIGNMENT







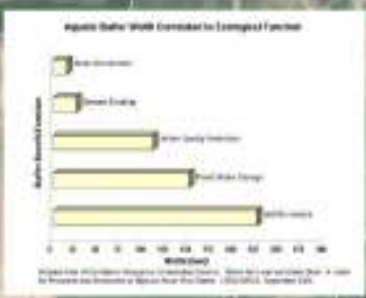
# River/Trail Repair Projects

- Balancing recreation and river health
- Floodplain impacts
- Opportunity costs for other priorities
- Paying now for past (well-intentioned) decisions



An analysis of the Poudre River Trail in Reach 13 was conducted to estimate short-term geomorphic hazard to the trail and to consider buffer recommendations from 0-300 feet to produce a recommended new trail alignment that would be more resilient to flood damage and beneficial to riparian health in the future. The short-term geomorphic hazard is a qualitative approximation of geomorphic risk to the trail, based on the threat of stream erosion and deposition processes, including channel migration and avulsion (i.e., the river mainstem changes alignment), associated with the 10-year recurrence interval flood event. Recommended alignment for a new trail is also provided. The dirt trail allows recreational access closer to the river at lower cost investment, from capital and maintenance perspectives. The suggested buffer distances, based off research by the USDA NRCS and previous Stillwater field investigations, represent approximate ranges of area around the Poudre River, which will likely provide a variety of ecological functions beneficial to human and river/riparian health. Examples of these ecological functions and the

LANDSCAPE FOR LEADY  
WATERWORKS WORLDWIDE



**Poudre River Preservation and Restoration Opportunities**  
Reach 13  
Geomorphic Hazard Mapping (Page 3 of 4)

John HALLMAN  
Project: Poudre Valley Property Sales  
Manager: Tully West Engineering Services  
Date: 10/14/2014 10:00

Prepared for the Town of Windsor and City of Greeley

**LEGEND**

- Parcels
- Short-term geomorphic hazard area
- Bank buffer distance:
  - 0-50 ft
  - 50-100 ft
  - 100-200 ft
  - 200-300 ft
- Recommended New Poudre River Trail Alignment
- Recommended New Dirt Trail Alignment

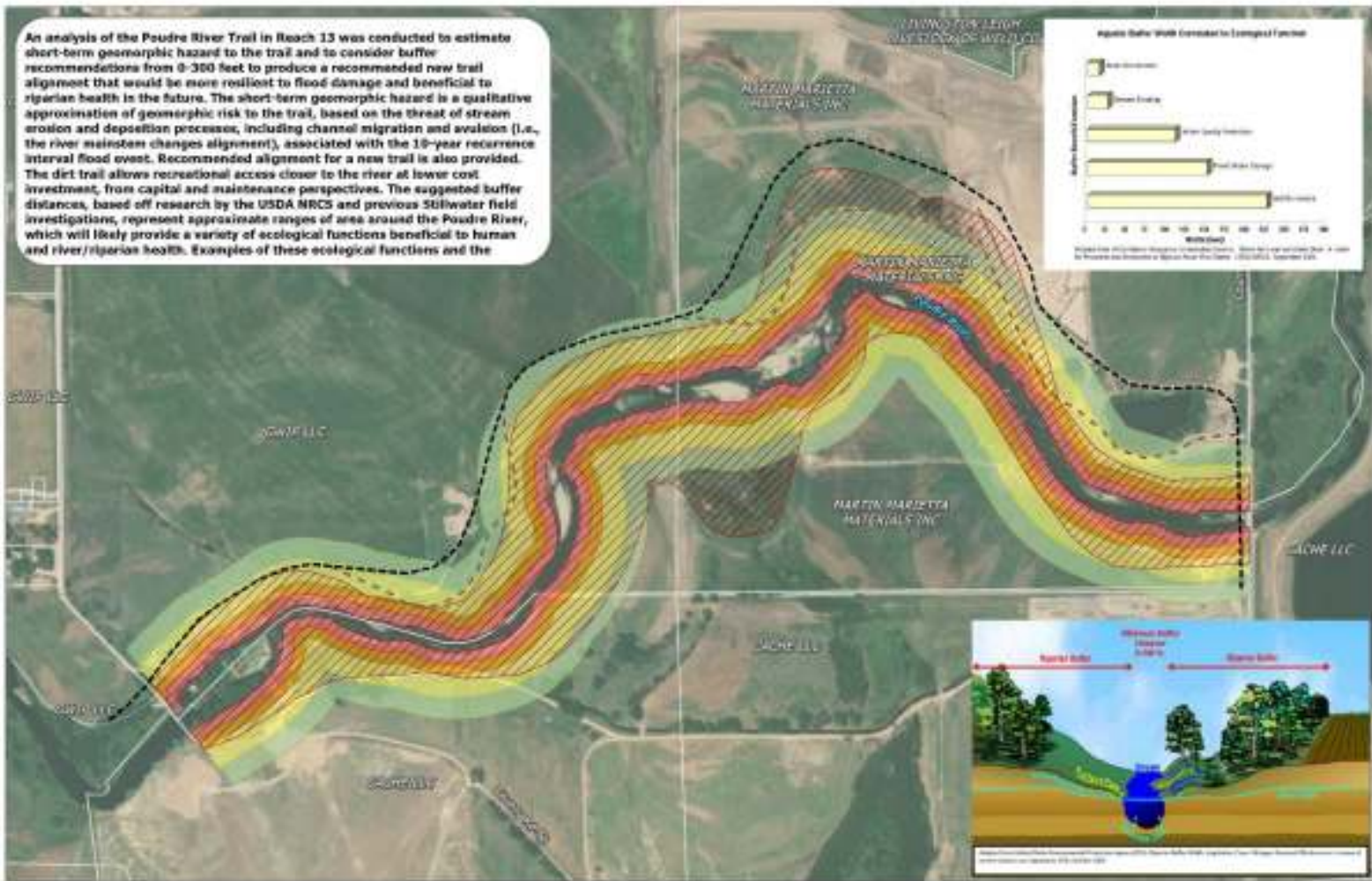
Property Ownership	Area within 200-ft buffer of channel (acres)
COFFE LLC	13.0
GWFF LLC	18.4
Martin Marietta Materials	
Sum	43.1
Grand Total	82.5

Stillwater Sciences

**SCALE & NORTH ARROW**



**MAP LOCATION**



# GET OUTDOORS GREELEY STRATEGIC PLAN

OUR HISTORY  
NUESTRA HISTORIA



## PUBLIC INPUT THEMES TEMAS DE INTERES PARA EL PÚBLICO

- BOARDS & COMMISSIONS
- SUSTAINABLE FUNDING & NEEDS
- INCLUSIVE CHILDREN & YOUTH VOICES
- STEERING COMMITTEE
- INTEGRATE OR PARTNER WITH LOCAL ORGANIZATIONS
- NATURE & OPEN SPACE
- TRAIL CONNECTIVITY
- VIRTUAL PUBLIC MEETINGS - ENGLISH / ESPAÑOL
- REGIONAL BUSINESS
- LIFETIME & INCLUSIVITY

Greeley  
Where Nature is a Priority



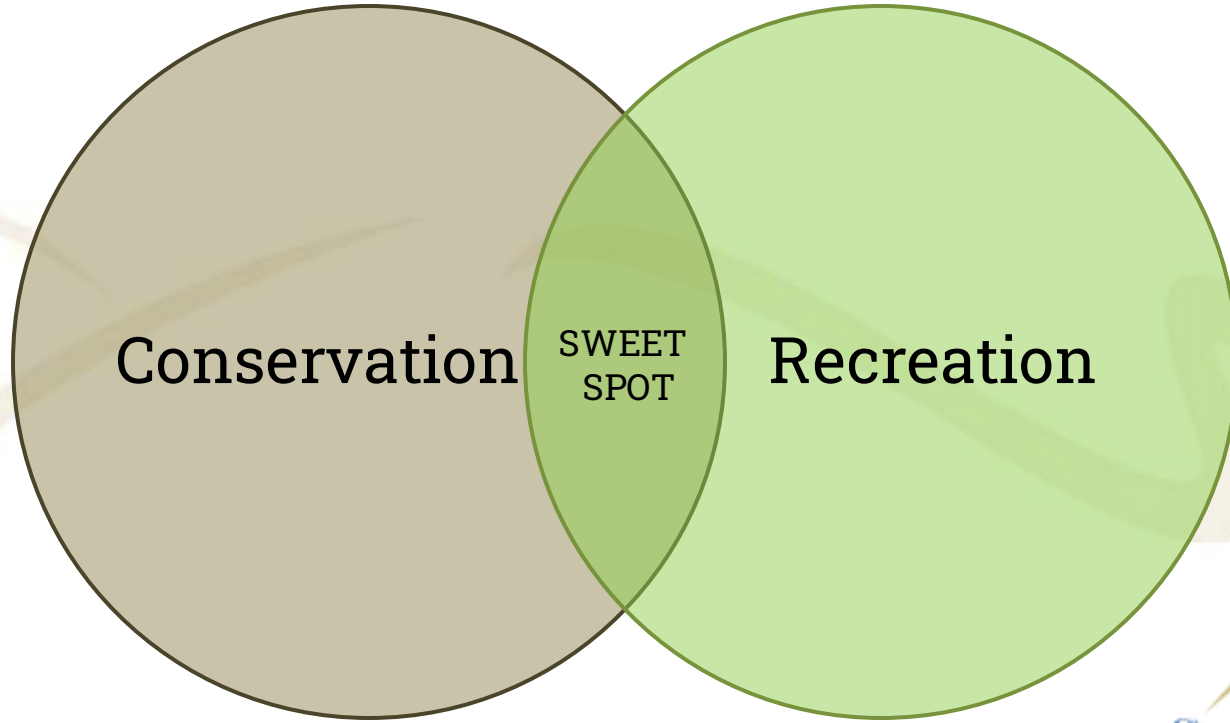
## PRIORITY THEMES TEMAS PRIORITARIOS

- SSS Sustainable Timbers
- Community Connections
- Community Connections
- Overlapping Governance
- Urban Growth
- Capital Planning

## OUR FUTURE NUESTRA FUTURO

COMMUNITY CONNECTED TO NATURE  
LA COMUNIDAD CONECTADA CON LA NATURALEZA



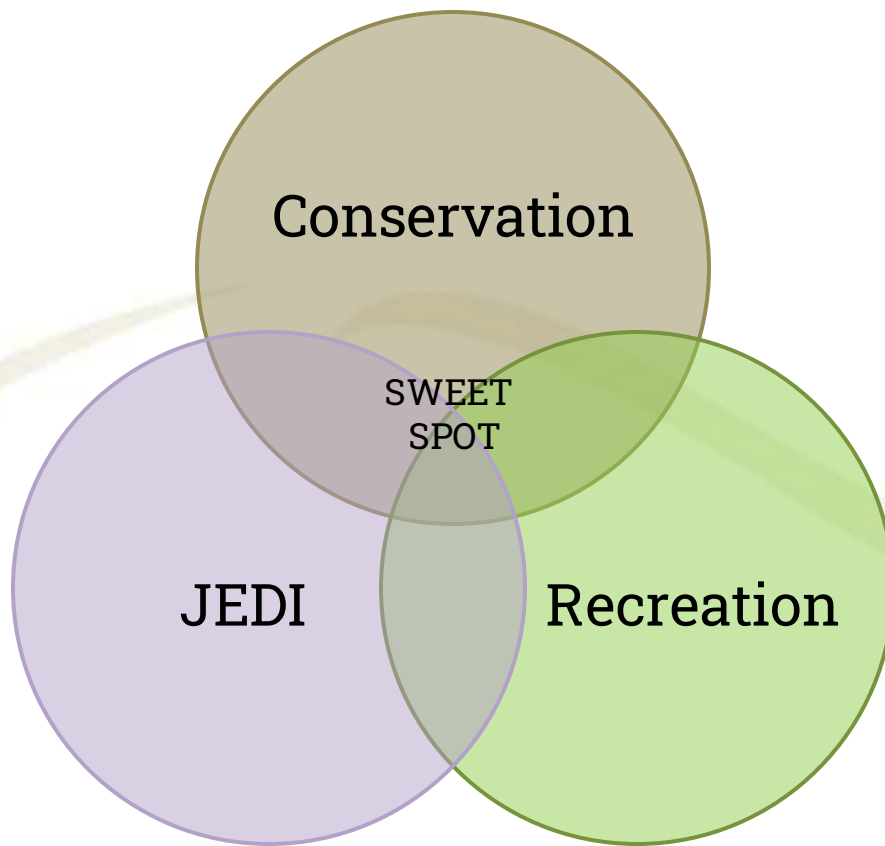


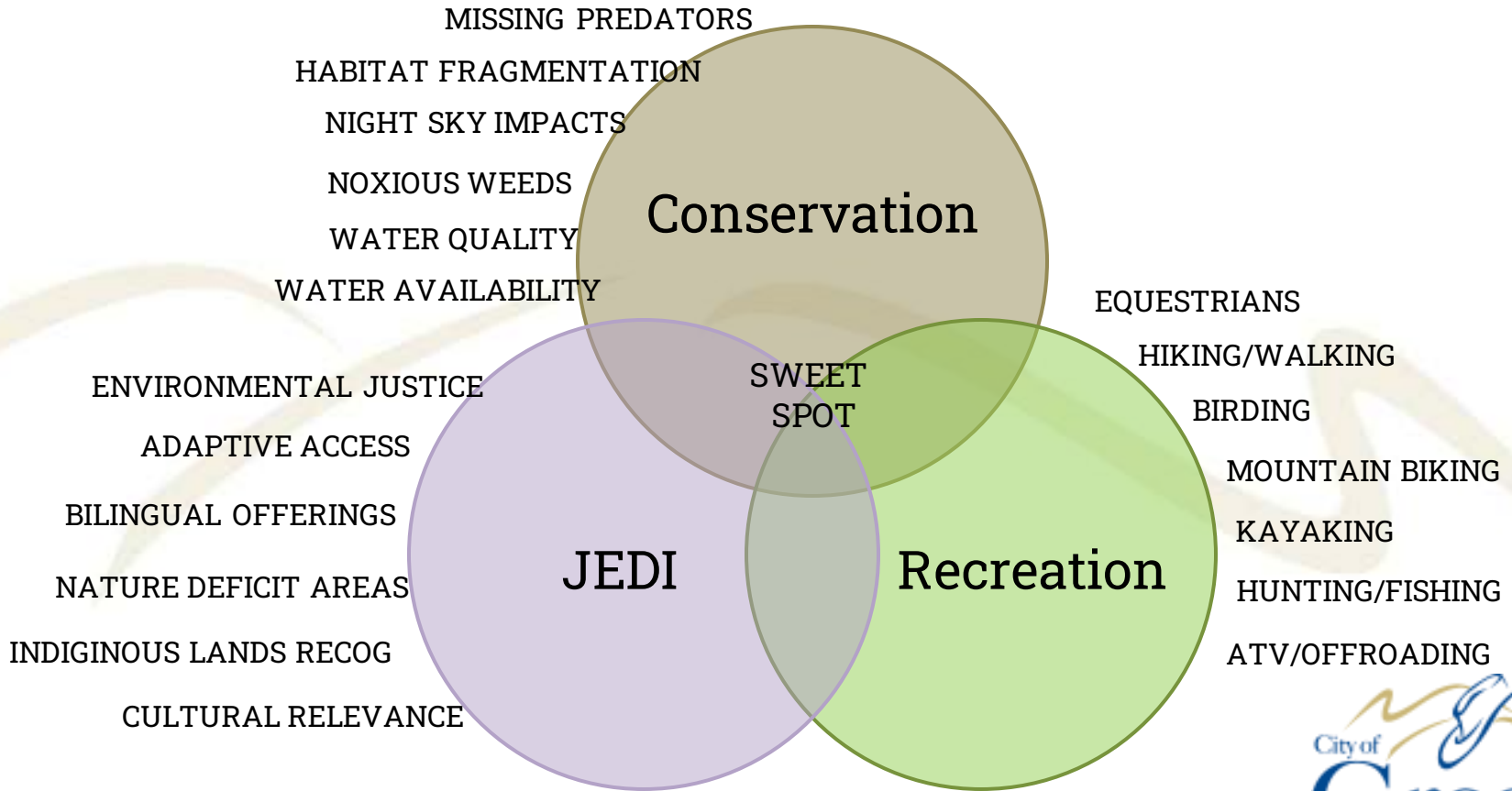
Conservation

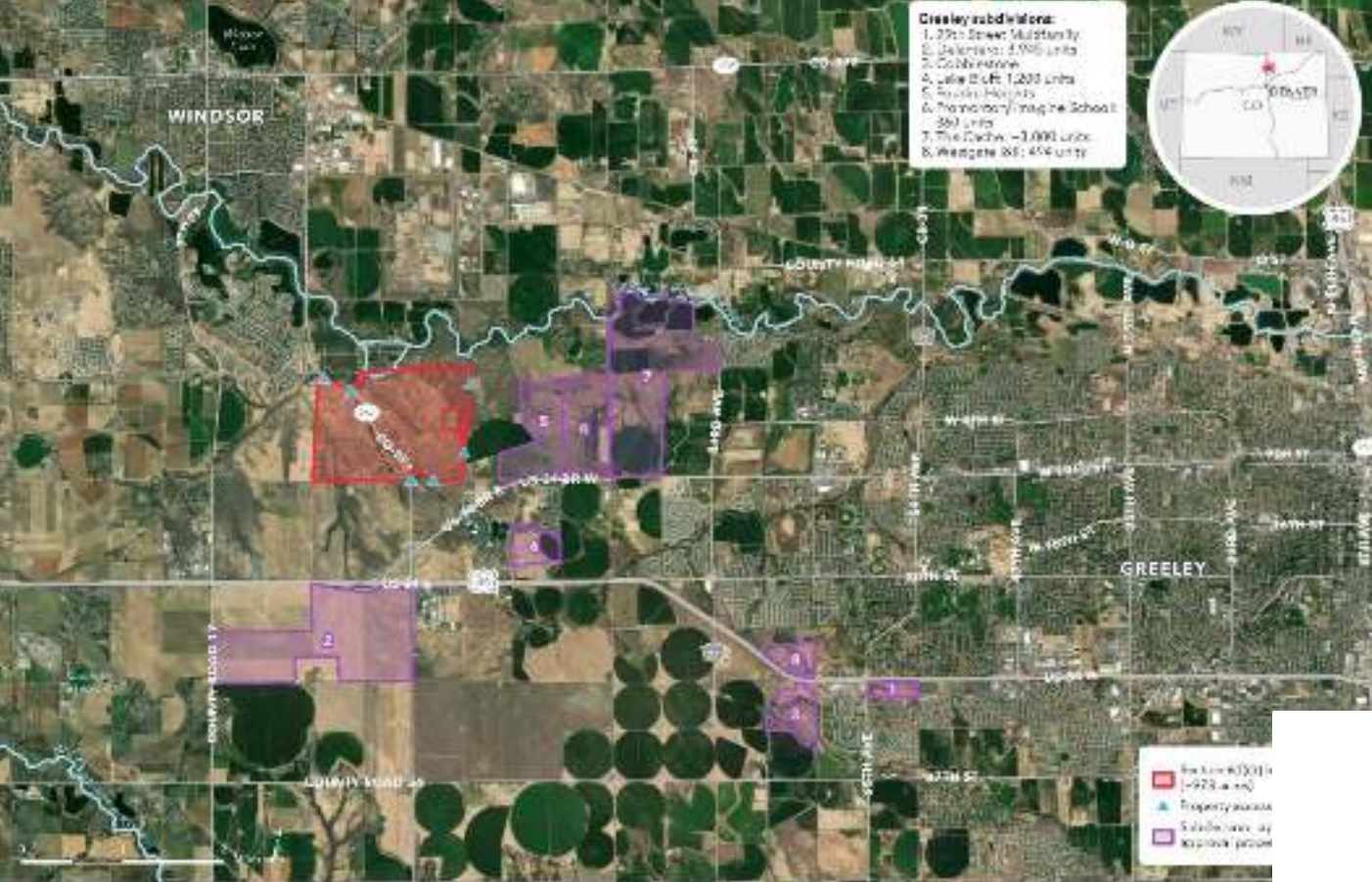
SWEET  
SPOT

Recreation









**Greeley subdivisions:**  
 1. 25th Street Municipality  
 2. Belvidere 4,700 units  
 3. Cambridge  
 4. Lake Bluff 1,200 units  
 5. The Lakeside  
 6. The Academy (Magpie School) 260 units  
 7. The Ranch - 3,000 units  
 8. Westgate 88: 454 units

# Development Pressure

- Greeley
- 6000+ new units
  - 16,000 new residents
  - 14% population increase

LWCF Section 6(f)(3) vicinity  
 SHUR VIEW, WELD COUNTY, COLORADO



Revised 06/2021. Copyright © 2021 by The Trust for Public Land. All rights reserved. This map is a public good and is available for use by anyone for non-commercial purposes. For more information, visit [www.tpl.org](http://www.tpl.org).





## Protection & Enhancement Zone

### Zones of Use/Management

- Habitat/Ecological Protection Zone
- Visitor Use Zone
- Administration Zone
- Edge Zone

### Regional Network of Patches and Corridors

- Priority Protection Areas
- Priority Connections

### Access and Circulation

- Connect to Poudre River Trail
- Connect to Greeley and Windsor
- Relationship to Missile Site Park

#### Water Features

- Wetland
- Section Line
- Trail Head
- Trail Head Buffer (500 ft)
- State Edge (Upper, Lower, Middle) and Mile (Water Integrity)
- Trailway Corridor
- Green Habitat Area

#### Linkage Elements

- Overcrossing
- Enhanced Greenway
- Resource Corridor
- Habitat Protection Area
- High Priority Protection Area
- Biodiversity Protection Area

#### Circulation

- Trail
- Parking
- Unimproved Road
- Poudre River Trail
- Trailway Corridor
- Greenway

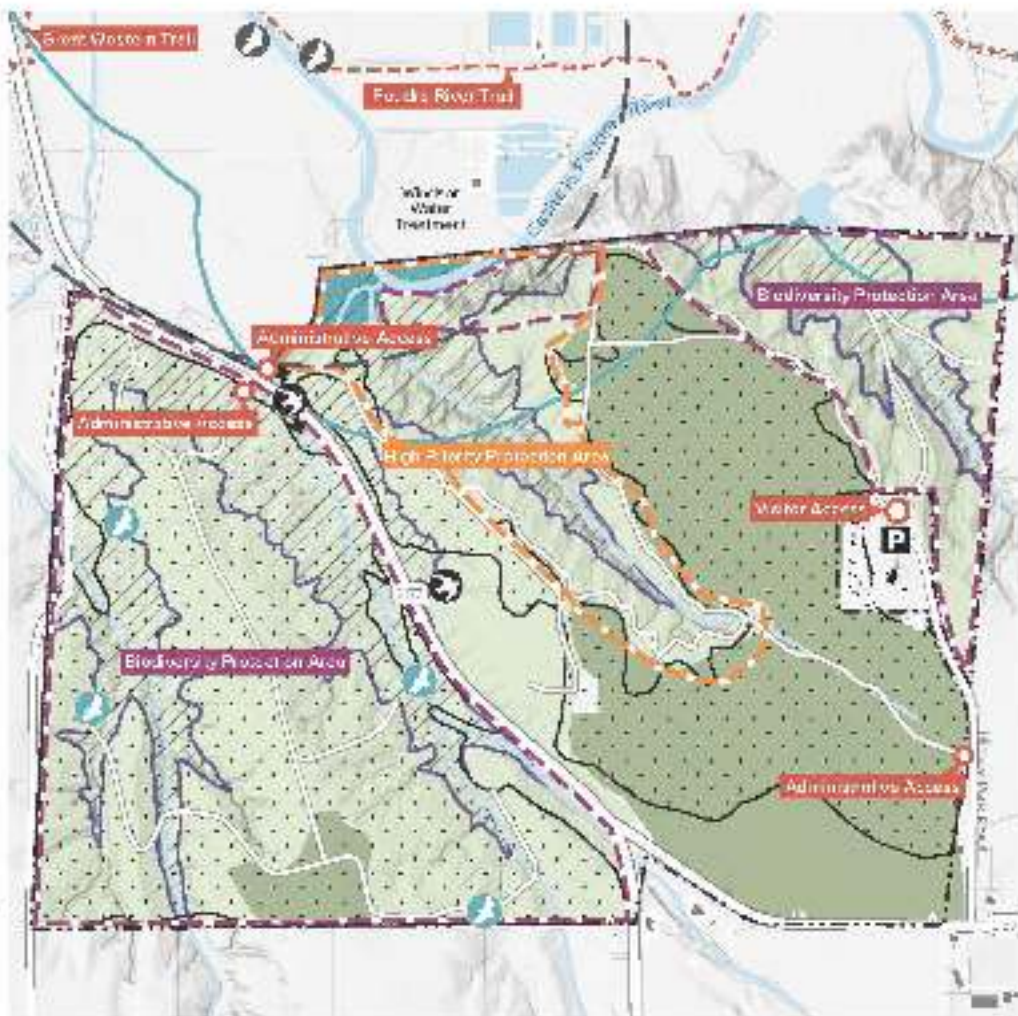




Figure 1. Overall Economic Impact



TABLE 1. OVERALL ECONOMIC IMPACT

	Direct Effect	Indirect Effect	Induced Effect	Total Effect
<b>Economic Impact</b>	<b>\$54,240,251</b>	<b>\$14,813,104</b>	<b>\$12,522,669</b>	<b>\$81,576,026</b>
<i>Tourism</i>	<i>\$53,793,270</i>	<i>\$14,607,006</i>	<i>\$12,411,700</i>	<i>\$80,811,976</i>
<i>Operations</i>	<i>\$359,176</i>	<i>\$176,537</i>	<i>\$92,929</i>	<i>\$628,644</i>
<i>Grantmaking</i>	<i>\$61,129</i>	<i>\$24,487</i>	<i>\$12,304</i>	<i>\$97,920</i>
<i>Capital Projects</i>	<i>\$26,676</i>	<i>\$5,074</i>	<i>\$5,736</i>	<i>\$37,486</i>

# FUNDING CONSERVATION

- CTF
  - COG \$500,000
  - TOW \$873,000
- Development Funds
  - COG \$500k (trails only)
  - TOW Park and Trail Development Fee \$4.57 Million (Includes Parks)
- Dedicated OS Sales Tax
  - TOW OS Tax \$1.6 Million Annually
  - COG \$0 (Projected revenue \$4+ Million annually)
- Grants
  - GOCO - \$3+ recent awards
  - CPW
  - LWCF - \$1.25 million

# Questions?



Wade Willis  
[wwillis@windsorgov.com](mailto:wwillis@windsorgov.com)  
970-674-2434

Justin Scharon  
[Justin.scharon@greeleygov.com](mailto:Justin.scharon@greeleygov.com)  
970-590-1705



Open Space  
and Trails



Natural Areas  
& Trails

2/15/23