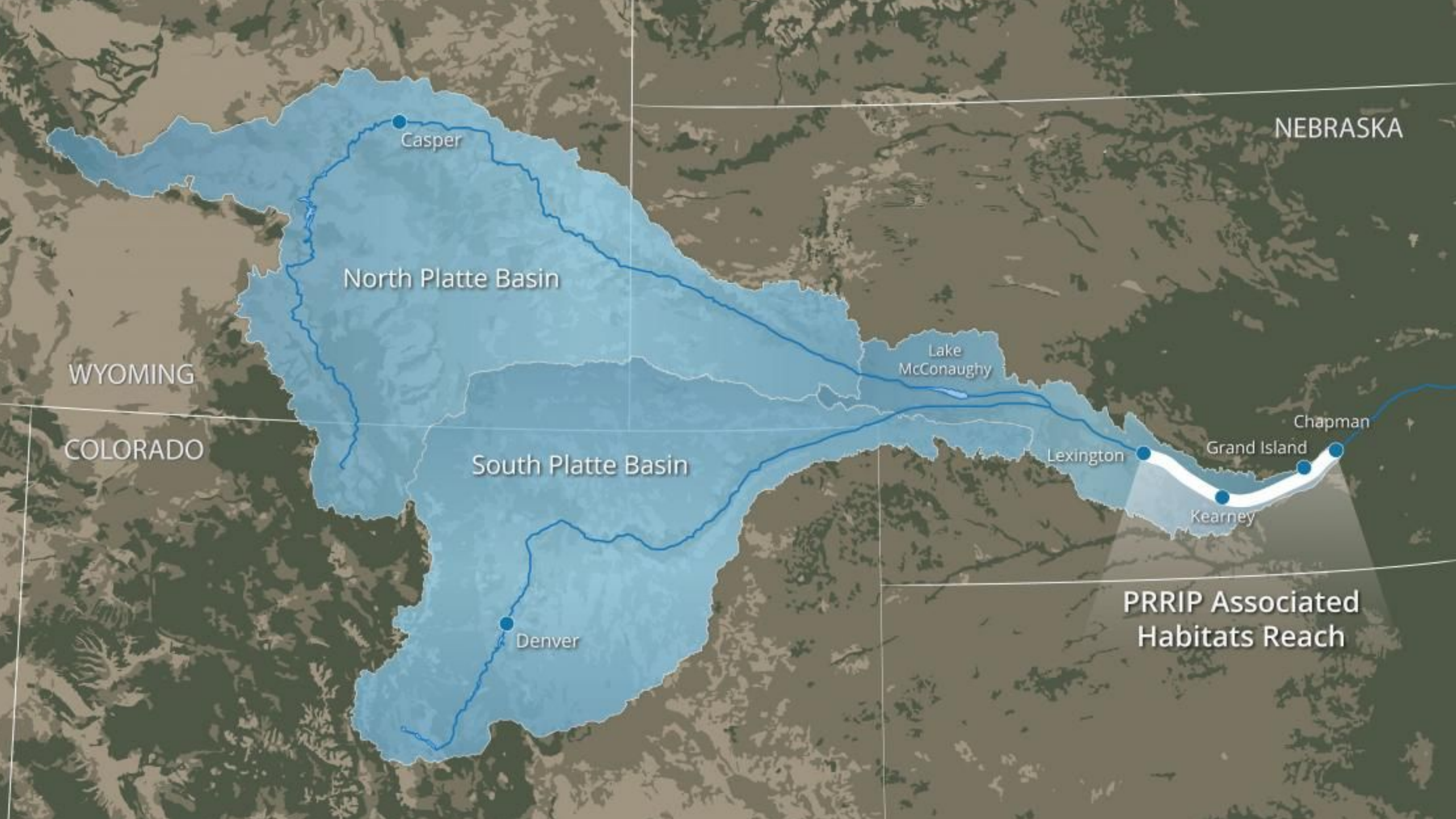


Platte River Recovery Implementation Program

Amy Ostdiek, Chief of the Interstate, Federal, and Water Information Section
Kara Scheel, Endangered Species Recovery Program Manager



COLORADO
Colorado Water
Conservation Board
Department of Natural Resources



NEBRASKA

North Platte Basin

WYOMING

Lake McConaughy

COLORADO

South Platte Basin

Lexington

Grand Island

Chapman

Denver

Kearney

PRRIP Associated Habitats Reach

Overview

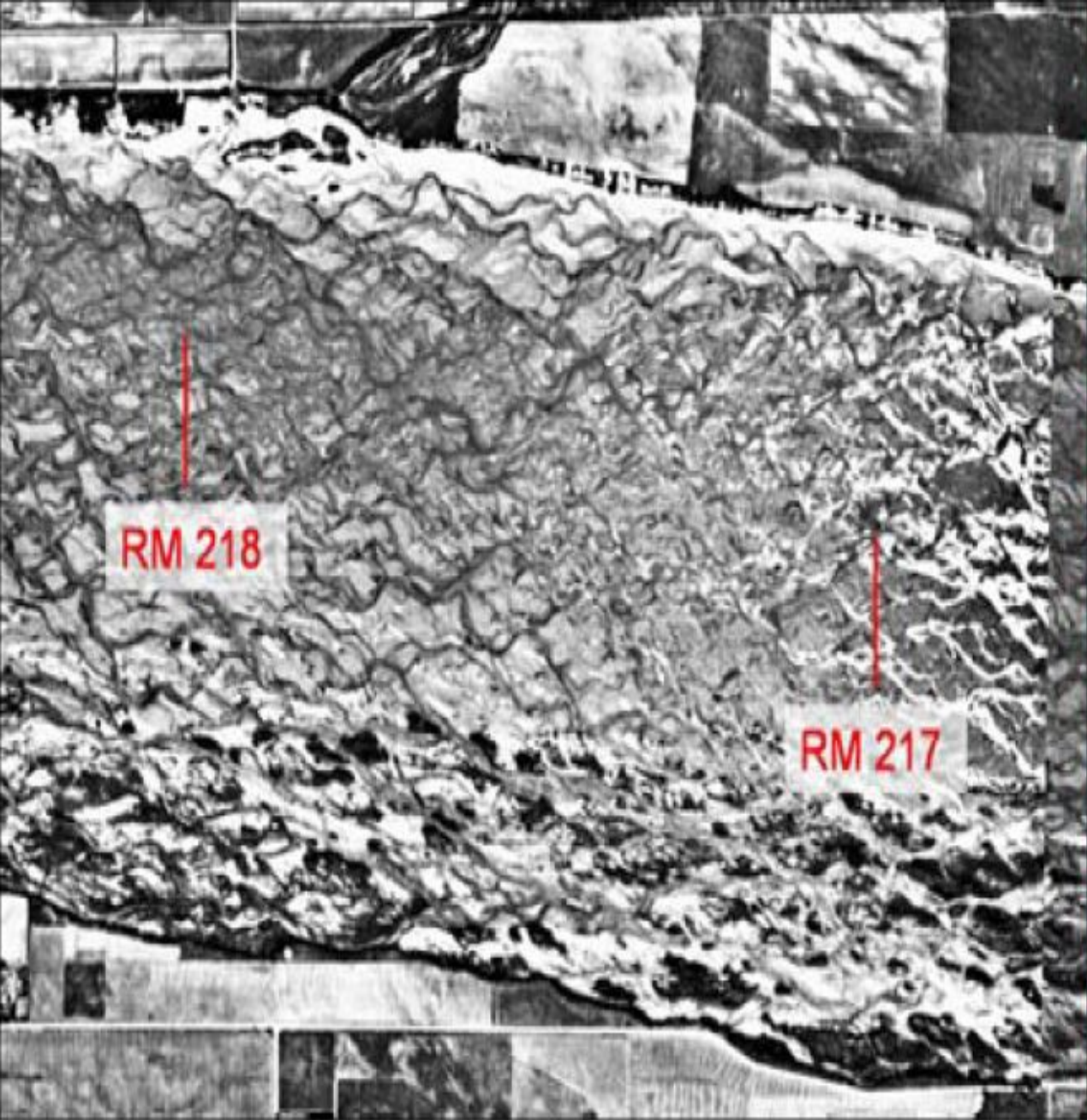
- 1 How did the Program come to be?
- 2 What does the Program do?
- 3 Next steps and future challenges



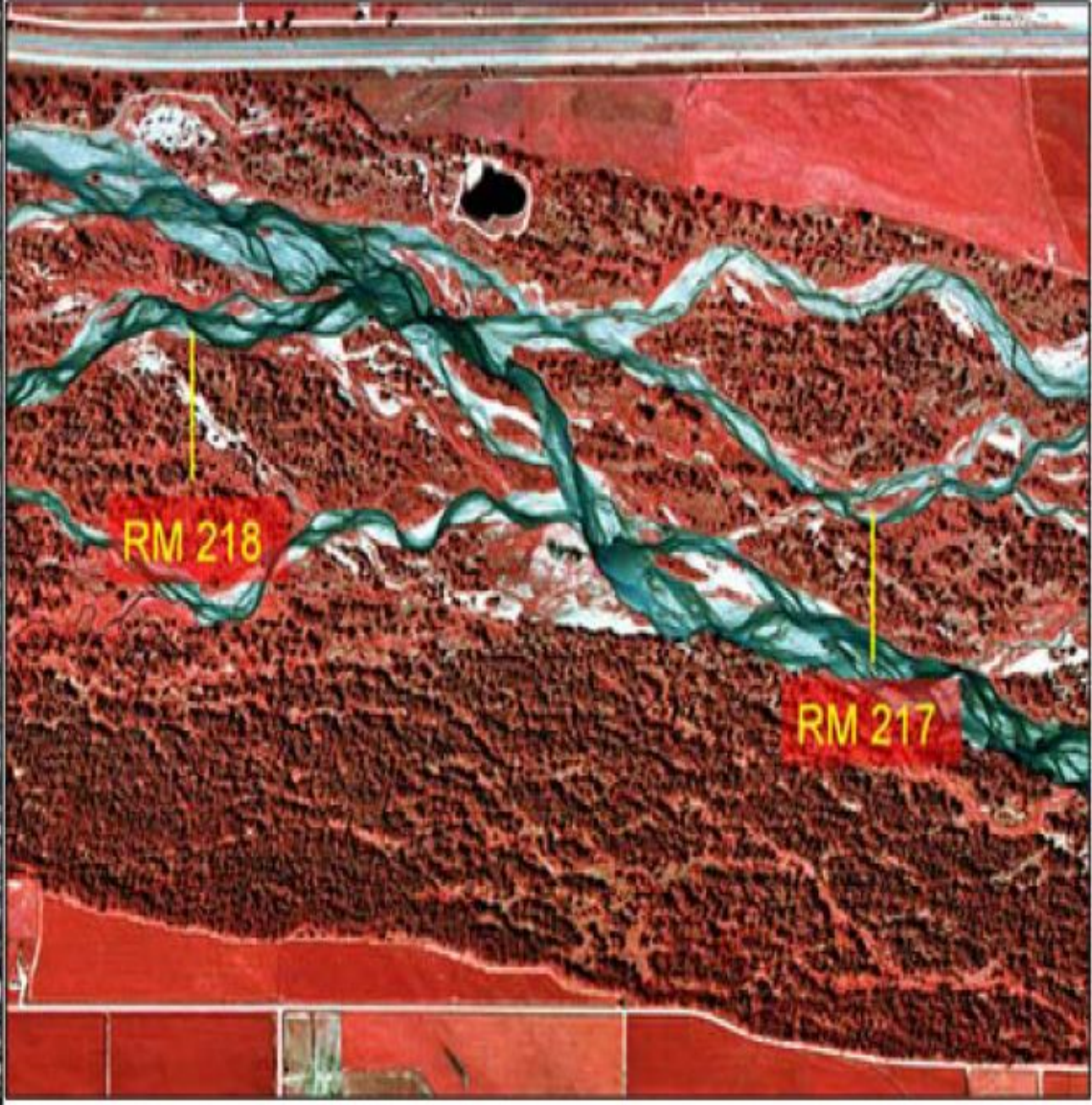
COLORADO

Colorado Water
Conservation Board

Department of Natural Resources



0 1,000 2,000 4,000 Feet



0 1,000 2,000 4,000 Feet

TARGET SPECIES

Whooping Crane



Interior Least Tern



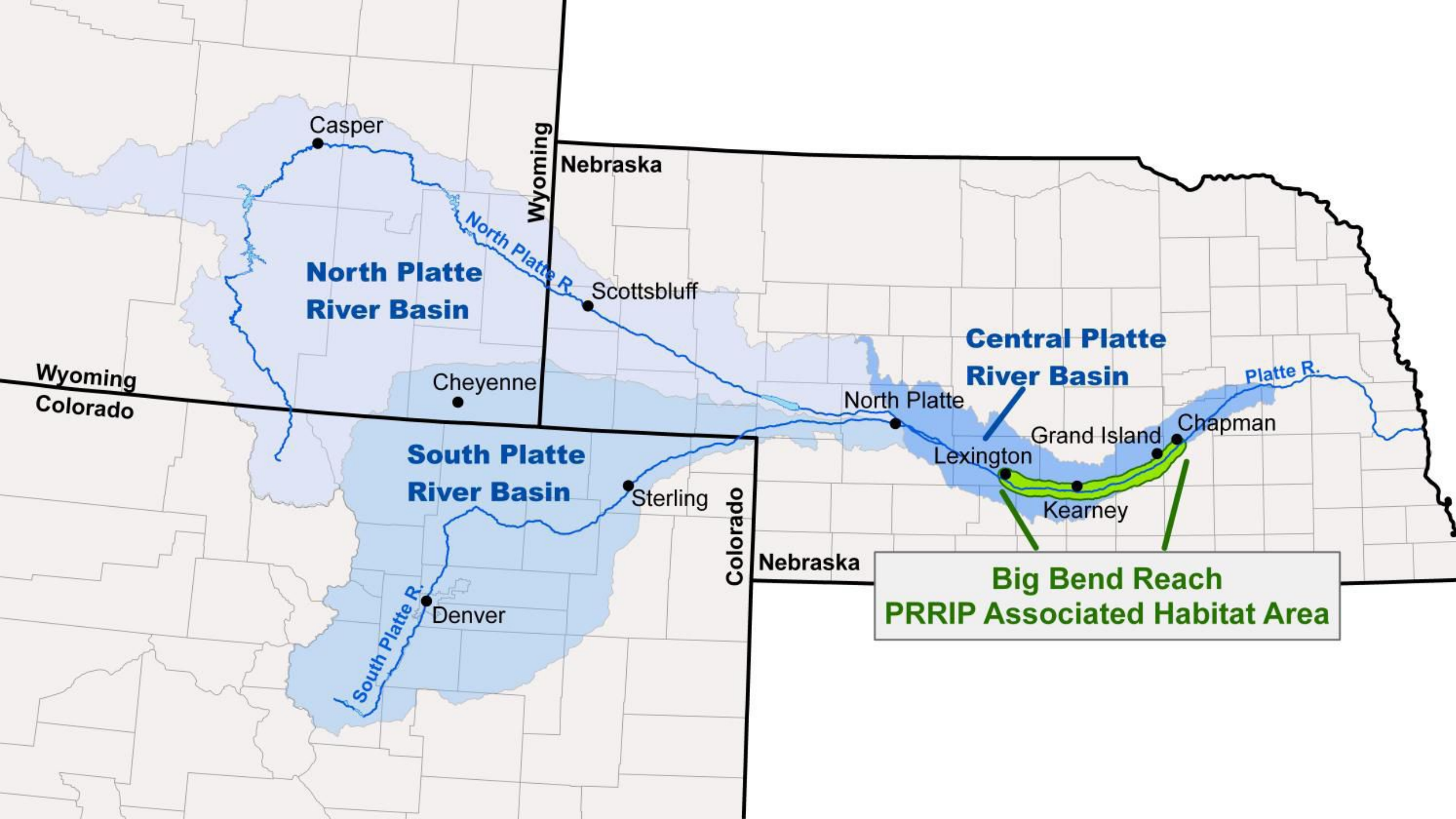
Piping Plover



Pallid Sturgeon







**North Platte
River Basin**

**Central Platte
River Basin**

**South Platte
River Basin**

**Big Bend Reach
PRRIP Associated Habitat Area**

Casper

Nebraska

Wyoming

Scottsbluff

Cheyenne

Wyoming
Colorado

North Platte

Platte R.

Grand Island

Chapman

Lexington

Kearney

Sterling

Colorado

Nebraska

Denver

South Platte R.

Program Goals

Assist in the recovery
of the four target
species

Provide ESA
compliance to allow
for continued water
development

PRRIP

```
graph TD; PRRIP[PRRIP] --- G1[Assist in the recovery of the four target species]; PRRIP --- G2[Provide ESA compliance to allow for continued water development]; PRRIP --- E1[WATER]; PRRIP --- E2[LAND]; PRRIP --- E3[ADAPTIVE MANAGEMENT];
```

Program Elements

WATER

LAND

**ADAPTIVE
MANAGEMENT**

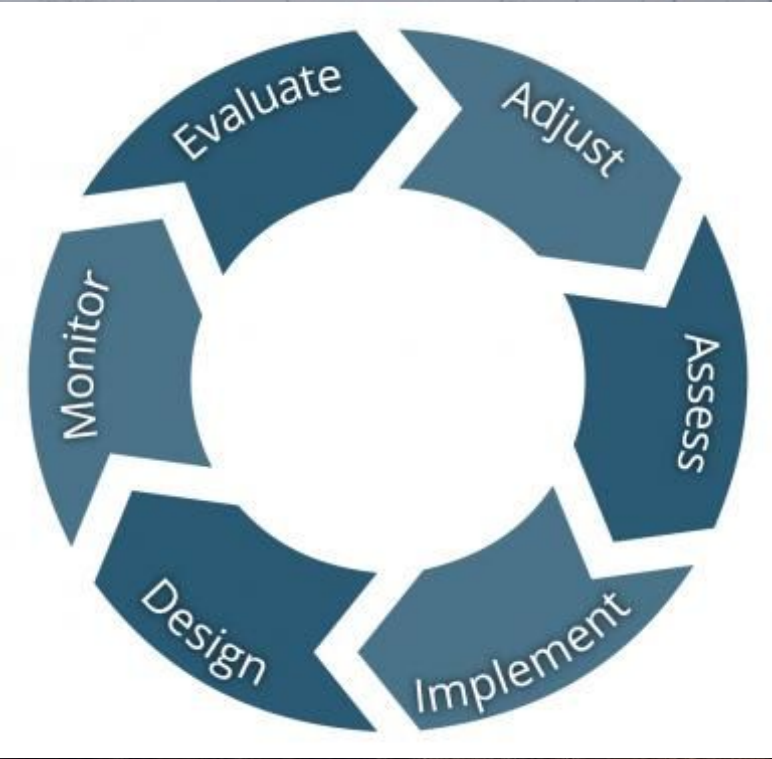


Water





Land

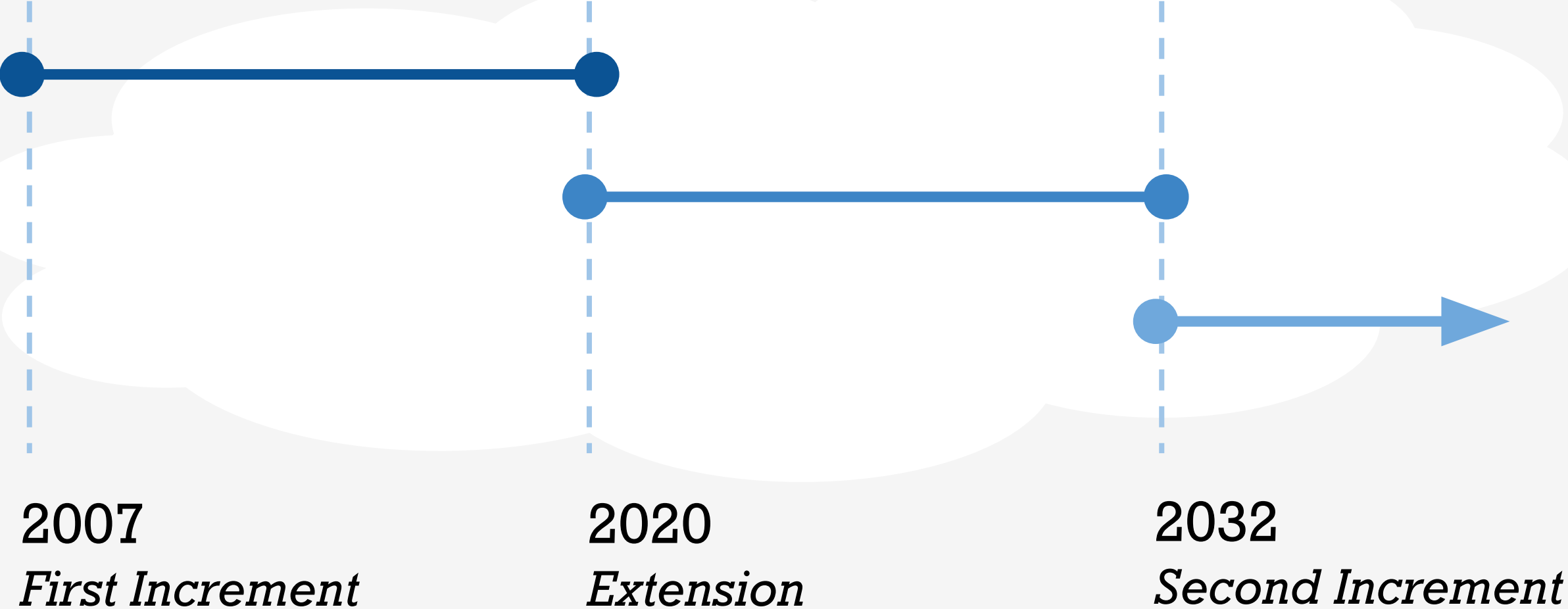


Adaptive Management



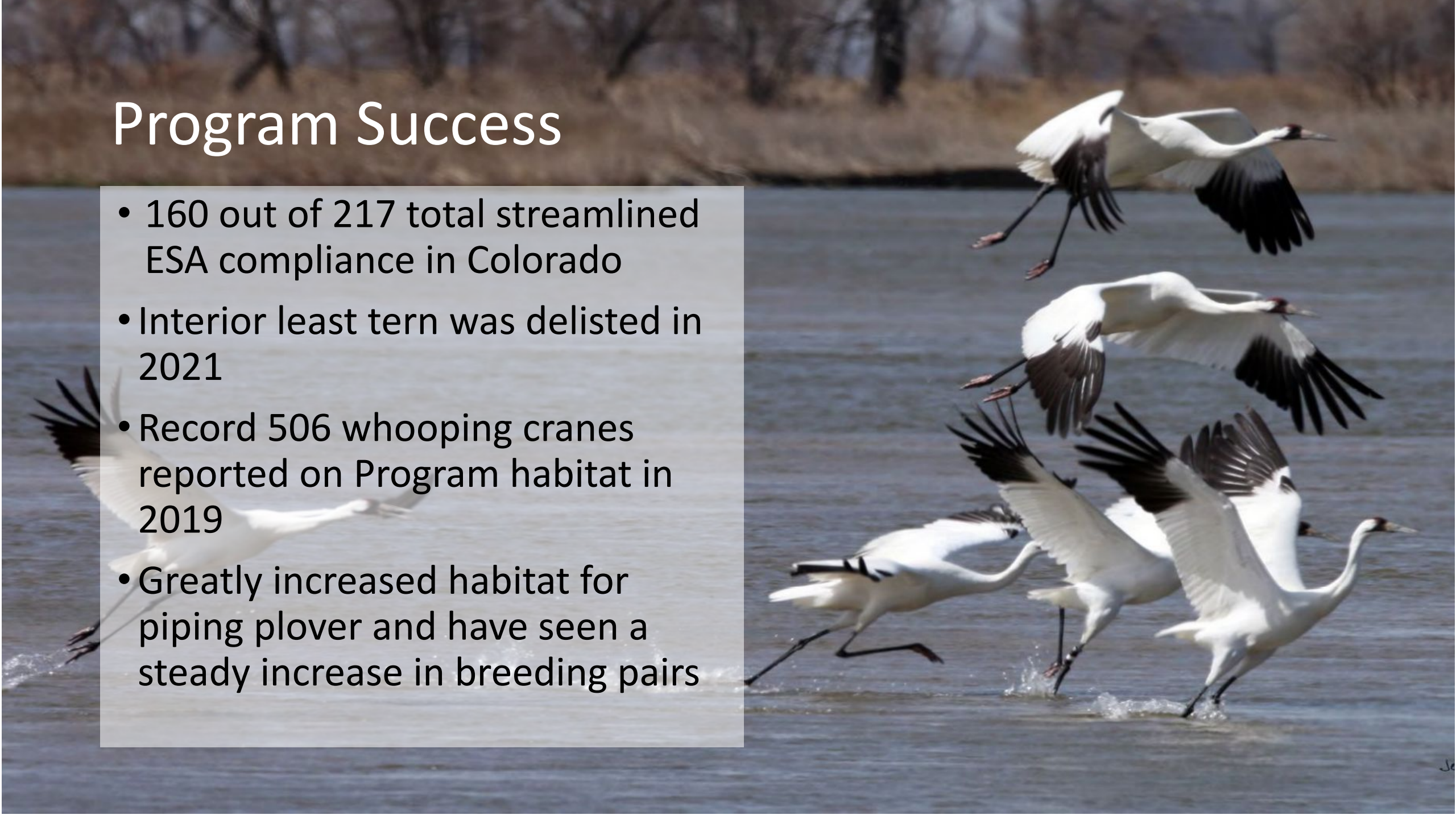
PRRIP Governance

Program Increments



Program Success

- 160 out of 217 total streamlined ESA compliance in Colorado
- Interior least tern was delisted in 2021
- Record 506 whooping cranes reported on Program habitat in 2019
- Greatly increased habitat for piping plover and have seen a steady increase in breeding pairs



Next Steps & Future Challenges

- Achieve water and land objectives
- Addressing “chokepoint”
- Approaching Second Increment
- Facing new challenges



KARA.SCHEEL@STATE.CO.US

AMY.OSTDIEK@STATE.CO.US

Learn more:
platteriverprogram.org/ ▶

Thank you to PRRIP for the
photos and videos!

