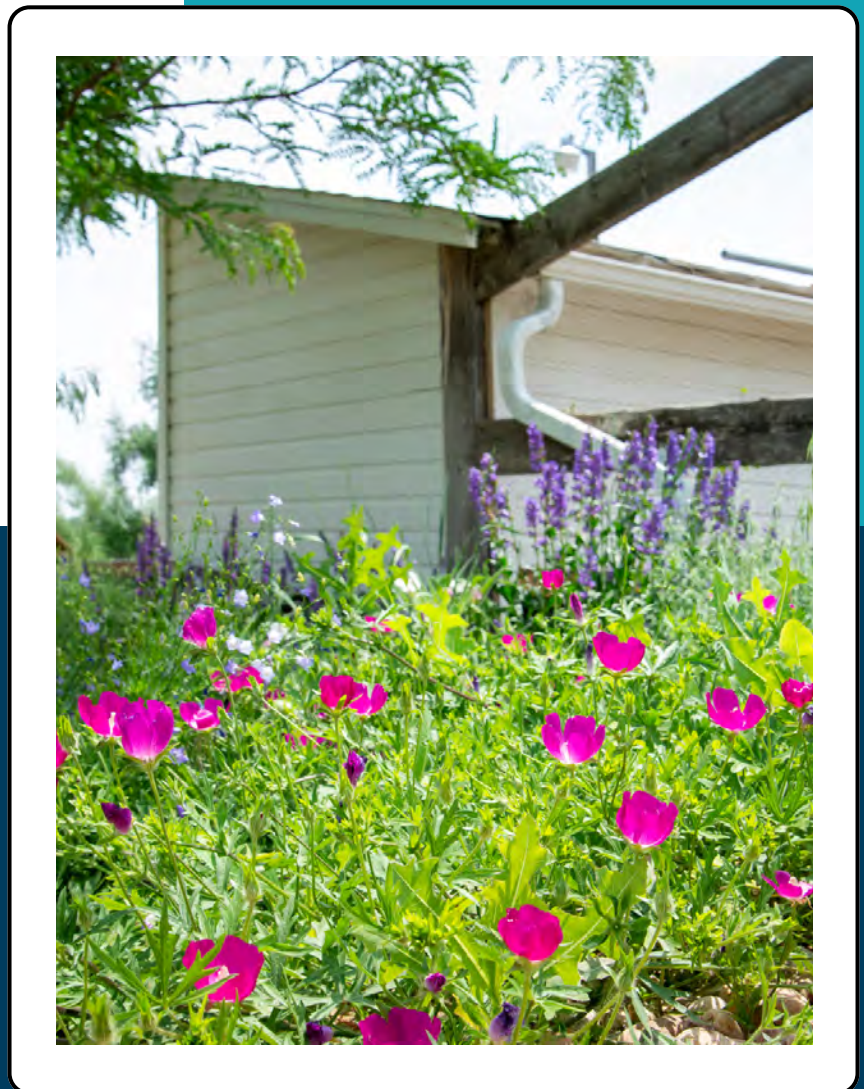


OCTOBER 2022

# RESIDENTIAL RAINGARDEN PILOT PROJECT

PART SHADE PLANTING LAYOUT: 1A



PRODUCED BY



**COLORADO  
WATER CENTER**  
COLORADO STATE UNIVERSITY



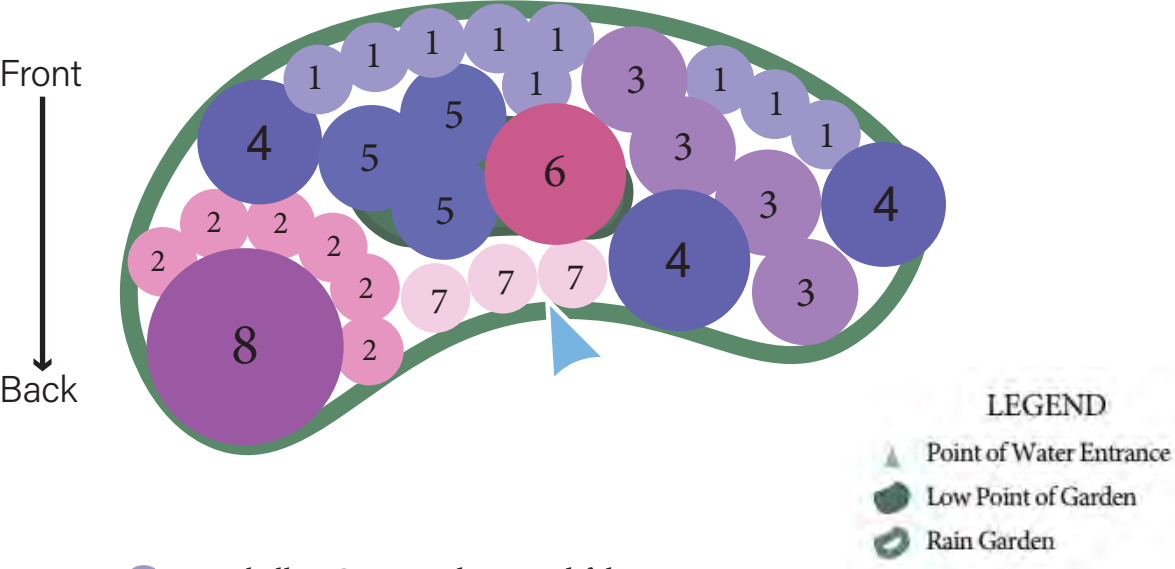
**COLORADO**  
Colorado Water  
Conservation Board  
Department of Natural Resources



**HORTICULTURE AND  
LANDSCAPE ARCHITECTURE**  
COLORADO STATE UNIVERSITY

# Rain Garden - Partial Shade

## Layout 1A - 50ft<sup>2</sup>



- 1 Harebells - *Campanula rotundifolia*
- 2 Prairie Smoke - *Geum triflorum*
- 3 Purple Prairie Clover - *Dalea purpurea*
- 4 Rocky Mountain Penstemon - *Penstemon strictus*
- 5 Spiderwort - *Tradescantia occidentalis*
- 6 Swamp Milkweed - *Asclepias incarnata*
- 7 Tufted Evening Primrose\* - *Oenothera caespitosa*
- 8 Winecups/Poppy Mallow - *Callirhoe involucrata*

\*May need to be substituted based on availability

## PARTIAL SHADE 1A SUBSTITUTION LIST

All Plants on list are Native to the Rocky Mountain/Front Range region

Layout Number	Original Plant	Subsitution	Tier	Dimensions	Color
1	Harebells	Showy Fleabane ( <i>Erigeron speciosus</i> )	mid	1.5ft tall, 1.5ft spread	lavendar, aster-like flowers with yellow center
		White Yarrow ( <i>Achillea millefolium</i> )	top	1-2ft tall, 1.5ft spread	white flowers, finely textured foliage
2	Prairie Smoke	Rose Vervain ( <i>Glandularia canadensis</i> )	top/mid	1ft tall, 1.5ft spread	blue/purple fragrant flowers, can become a groundcover
		Rocky Mountain Columbine ( <i>Aquilegia caerulea</i> )	mid	1.5ft tall, 1ft spread	Light blue and white flowers
3	Purple Prairie Clover	Wild Beebalm ( <i>Monarda fistulosa</i> )	top/mid	2ft tall, 2ft spread	purple or pink flowers
		Rocky Mountain Penstemon ( <i>Penstemon strictus</i> )	top	2ft tall, 2ft spread	purple/blue flowers
4	Rocky Mountain Penstemon	Great Blue Lobelia ( <i>Lobelia siphilitica</i> )	top	2ft tall, 2ft spread	small, blue/purple flowers in a tall panicle
		Cutleaf Coneflower ( <i>Rudbeckia laciniata</i> )	mid	3ft tall, 2ft spread	large yellow coneflowers
5	Spiderwort	Harebells ( <i>Campanula rotundifolia</i> )	mid/low	1.5ft tall, 10" spread	light blue, ballon-like flower with delicate foliage
		Rocky Mountain Iris ( <i>Iris missouriensis</i> )	low	1.5ft tall, 10" spread	Blue flowers, bulbs resprout
6	Swamp Milkweed	American Spikenard ( <i>Maianthemum racemosum</i> )	mid/low	2.5ft tall, 2ft spread	wavy, ovate foliage with pinkish white glowers that smell like roses
		Purple Monkey Flower ( <i>Mimulus lewisii</i> )	low	2.5ft tall, 2ft spread	fuschia snap dragon-like flowers with yellow throats
7	Tufted Evening Primrose	Winecups ( <i>Callirhoe involucrata</i> )	top/mid	10" tall, 2-3ft spread	GROUNDCOVER, fuschia flowers
		Sea Pink ( <i>Armeria maritima</i> )*	top	1ft tall, 1ft spread	pink globes of flowers, *naturalized
8	Winecups	Western Columbine ( <i>Aquilegia formosa</i> )	mid	1.5ft tall, 2ft spread	red and yellow penduous flowers
		Switchgrass ( <i>Panicum virgatum</i> )	top	2-5ft tall, 2-3ft spread	ornamental grass with red flower panicles

### Tiers:

**Top:** lowest water requirements, planted along the garden berm

**Mid:** average water requirement, planted on the sloping sides of the garden

**Low:** higher water requirements, planted in the basin, roots must withstand wet conditions up to 12 hours

## Part Shade Plant Guide Layout 1A

### 1. Harebells/Bluebells (*Campanula rotundifolia*)



Mature Height	1ft tall and 1ft spread, stems are weak and the plant often bends over.
Care & Water	Once established, water once per week.
Flowering Time	June-September, periwinkle color flowers.
Hardiness	Zones 2-7, plant 10" apart
Special Features and Notes	Attracts hummingbirds. When grown from seed, the plants start blooming the second year.

### 2. Prairie Smoke (*Geum triflorum*)



Mature Height	1ft tall and 1ft spread
Care & Water	Once established, water once per week.
Flowering Time	May-July
Hardiness	Zones 3-8, plant 10" apart
Special Features and Notes	Looks like mini truffula trees! Attracts butterflies and is deer resistant. Rabbits like to eat the blooms.

### 3. Purple Prairie Clover (*Dalea purpurea*)



Mature Height	1-3ft tall and 1-2ft spread
Care & Water	Once established, water once per week.
Flowering Time	July-August
Hardiness	Zones 3-8, plant 12" apart

## Part Shade Plant Guide Layout 1A



Special Features and Notes	They bloom from bottom to top. Nitrogen fixer adding nitrogen back into the soil. Attracts bees, birds, and butterflies. Deer and rabbit resistant.
----------------------------	---

### 4. Rocky Mountain Penstemon (*Penstemon strictus*)

Mature Height	2-3ft tall and 2-3ft spread
Care & Water	Once established, water once per week.
Flowering Time	Early June
Hardiness	Zone 3-8, plant 20" apart
Special Features and Notes	Evergreen perennial that attracts hummingbirds, bees, and other pollinators. Spires of deep purple/indigo flowers above mat of foliage.



### 5. Spiderwort (*Tradescantia occidentalis*)

Mature Height	1-2ft tall with 1ft spread
Care & Water	Once established, water once per week.
Flowering Time	April-September
Hardiness	Zones 4-9, plant 10" apart
Special Features and Notes	Each flower only lasts one day, the plant blooms in succession. Attracts native bees. Deer resistant.



### 6. Swamp Milkweed (*Asclepias incarnata*)

Mature Height	4-5ft tall with 2-3ft spread
Care & Water	Once established, water once per week.

## Part Shade Plant Guide Layout 1A



Flowering Time	June-September
Hardiness	Zones 3-11, plant 30" apart
Special Features and Notes	Toxic to dogs, cats, and horses if consumed. Attracts butterflies (especially Monarchs) and hummingbirds. Deer resistant.

### 7. Tufted Evening Primrose (*Oenothera caespitosa*)

Mature Height	1ft tall with 2ft spread
Care & Water	Once established, water once per week.
Flowering Time	April-August
Hardiness	Zones 4-8, plant 24" apart
Special Features and Notes	Delicate foliage with large flowers that bloom in the afternoon and close in the morning, the withered petals turn pink. Attracts birds.



### 8. Winecup/Poppy Mallow (*Callirhoe involucrata*)

Mature Height	6in-1ft tall with 3ft spread
Care & Water	Once established, water once per week.
Flowering Time	March-June
Hardiness	Zones 4-8, plant 3ft apart
Special Features and Notes	Ornate foliage that is attractive when not in bloom. Attracts butterflies and hummingbirds.