






Cleave Simpson – General Manager
Rio Grande Water Conservation District



DISCUSSING WATER RIGHTS: A WESTERN PASTIME

Legend

-  Groundwater Model Boundary (Active Cells)
-  Active Model Cells
-  Response Areas

Ownership

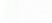






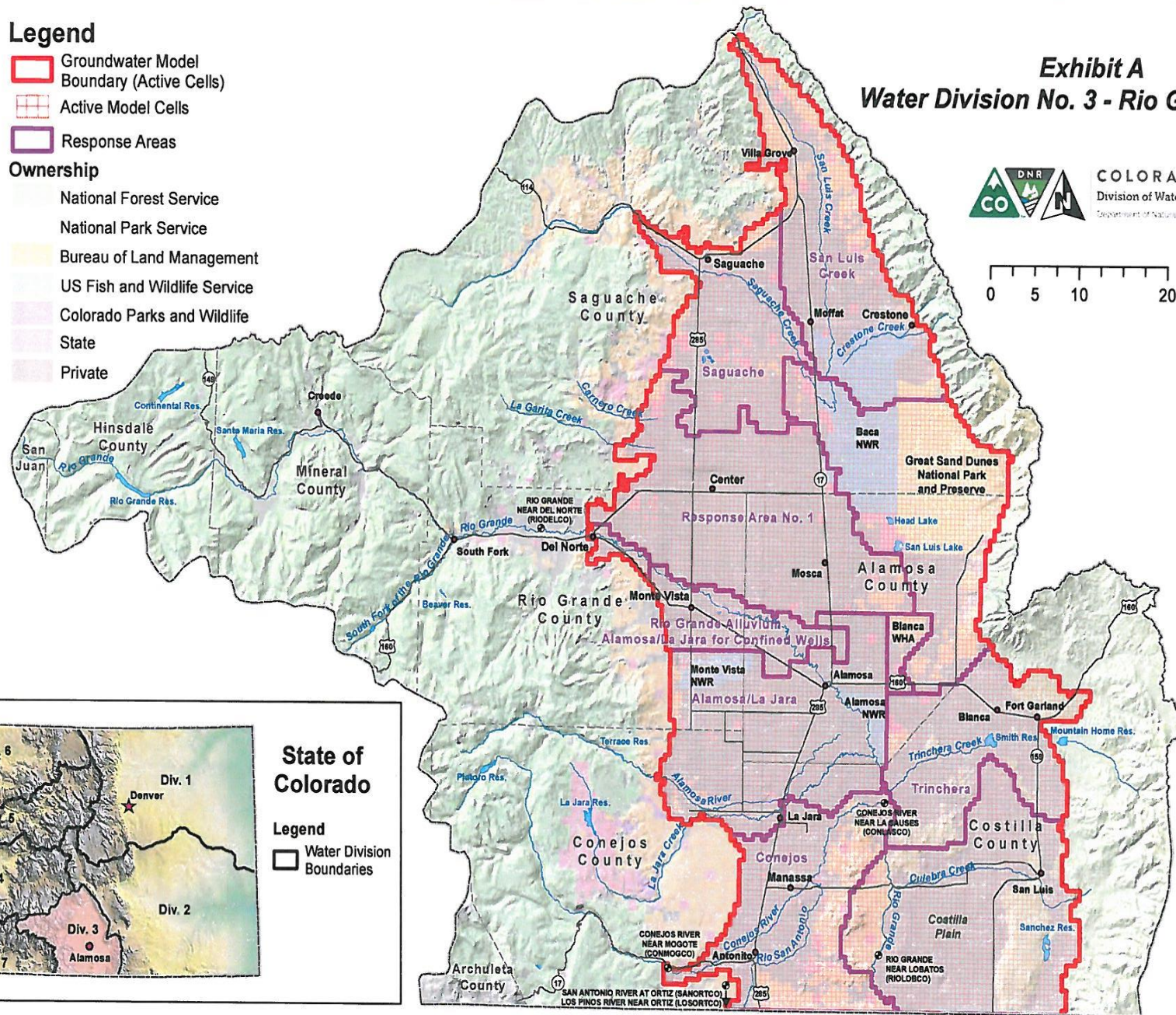
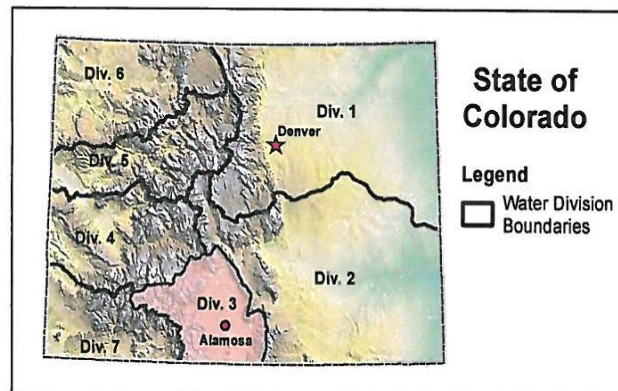
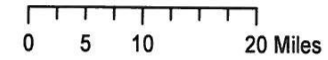
-  National Forest Service
-  National Park Service
-  Bureau of Land Management
-  US Fish and Wildlife Service
-  Colorado Parks and Wildlife
-  State
-  Private

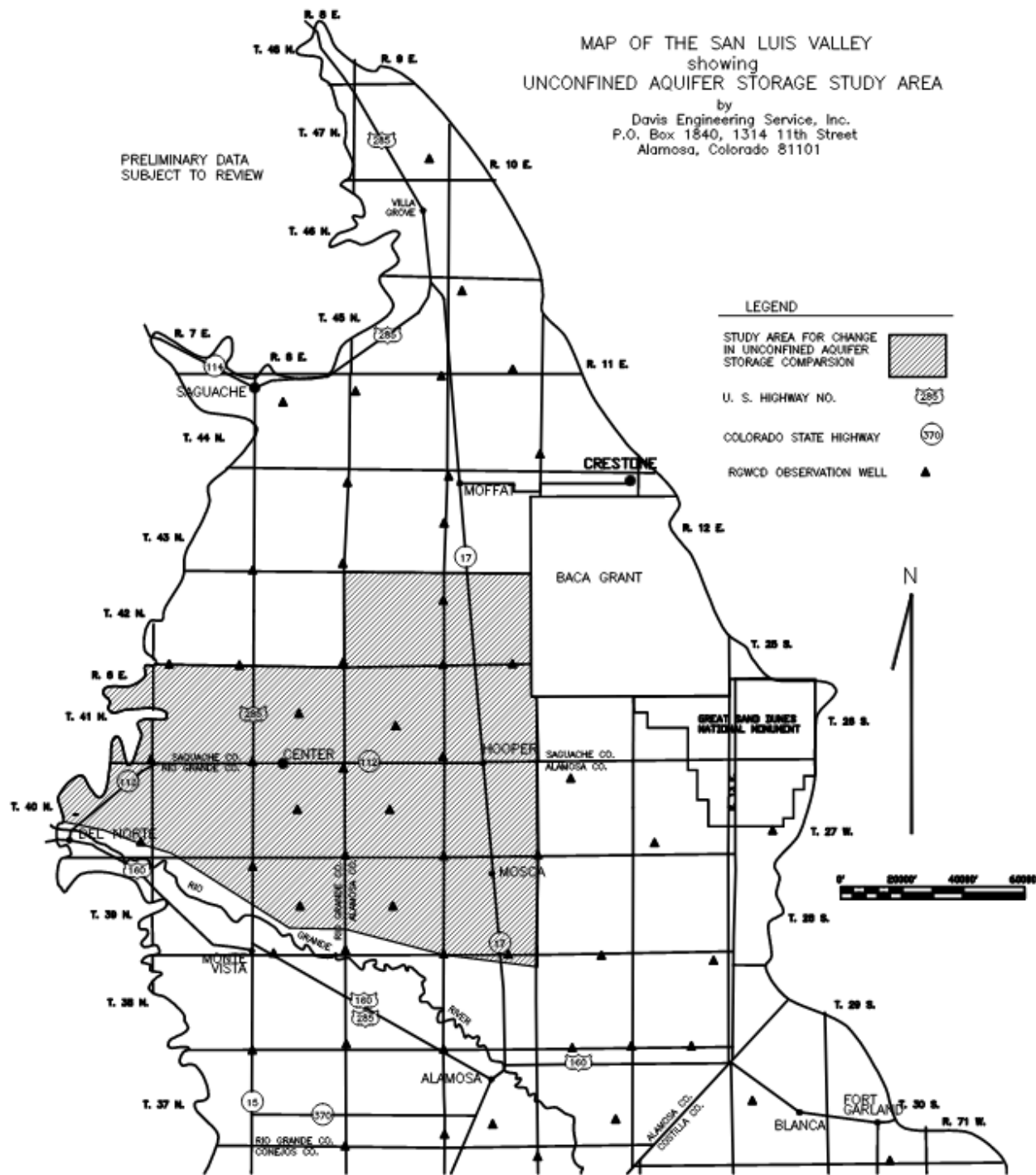
Exhibit A Water Division No. 3 - Rio Grande Basin



MAP OF THE SAN LUIS VALLEY
showing
UNCONFINED AQUIFER STORAGE STUDY AREA

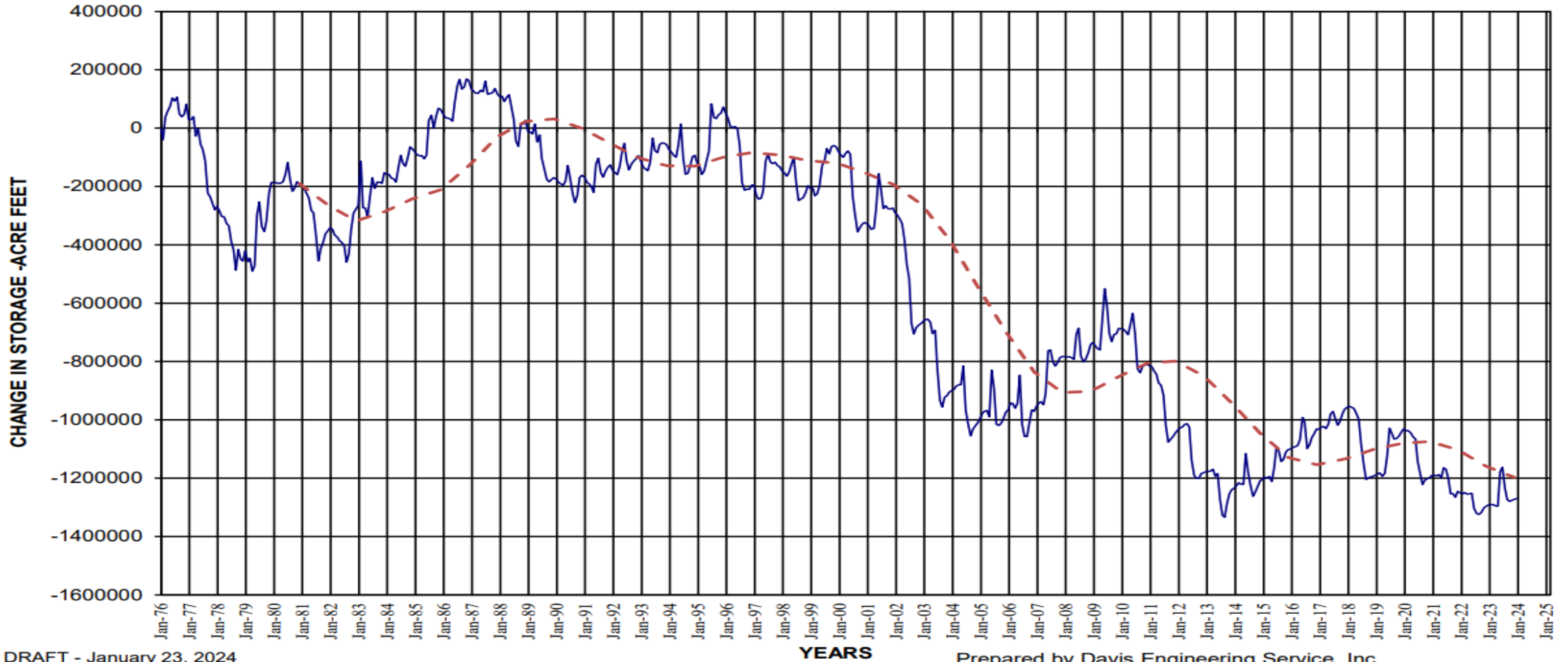
by
Davis Engineering Service, Inc.
P.O. Box 1840, 1314 11th Street
Alamosa, Colorado 81101

PRELIMINARY DATA
SUBJECT TO REVIEW



CHANGE IN UNCONFINED AQUIFER STORAGE WEST CENTRAL SAN LUIS VALLEY

— Monthly Change - - - 5 yr. running avg.



DRAFT - January 23, 2024
Data through January 12, 2024

Prepared by Davis Engineering Service, Inc,
For Rio Grande Water Conservation Dist.

