

Water Literate Leaders



Open Space
and Trails



Natural Areas
& Trails

4/10/24

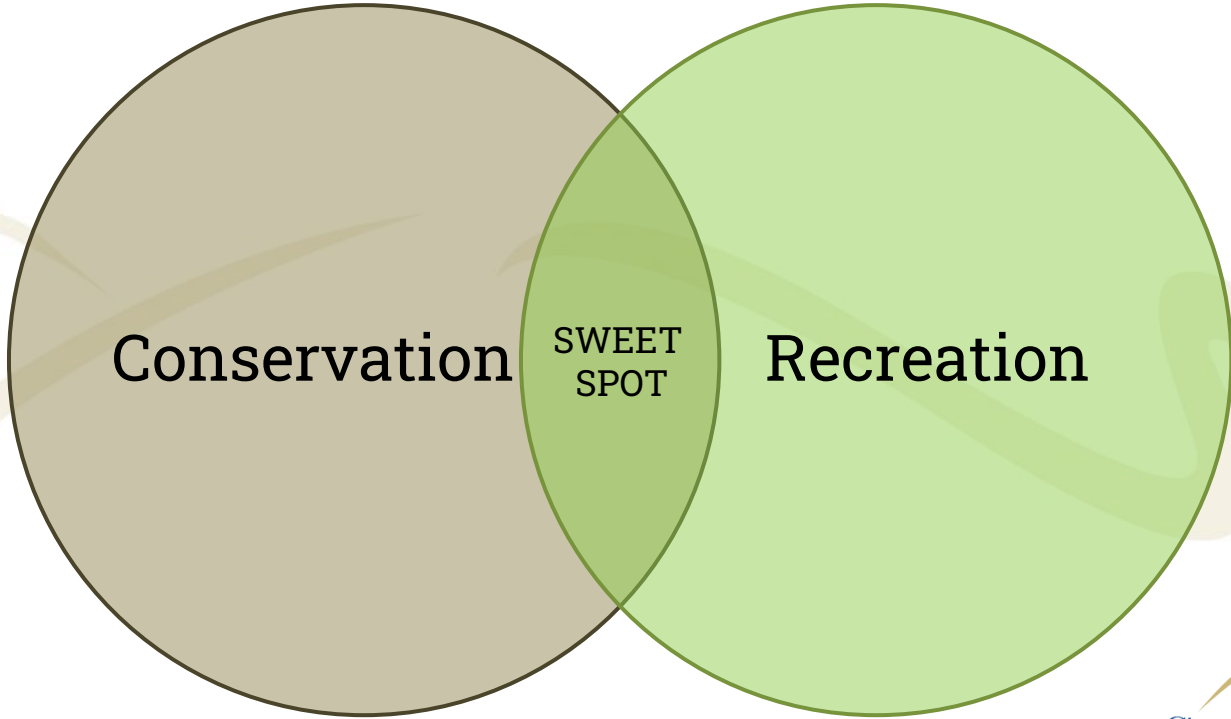
By the Numbers

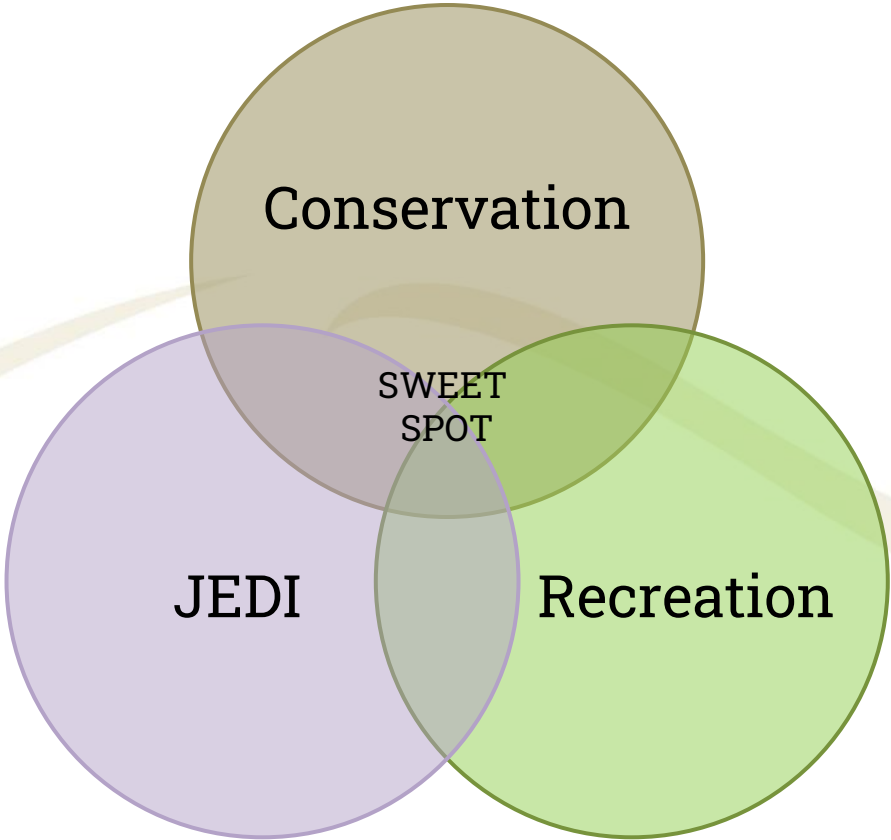
WINDSOR

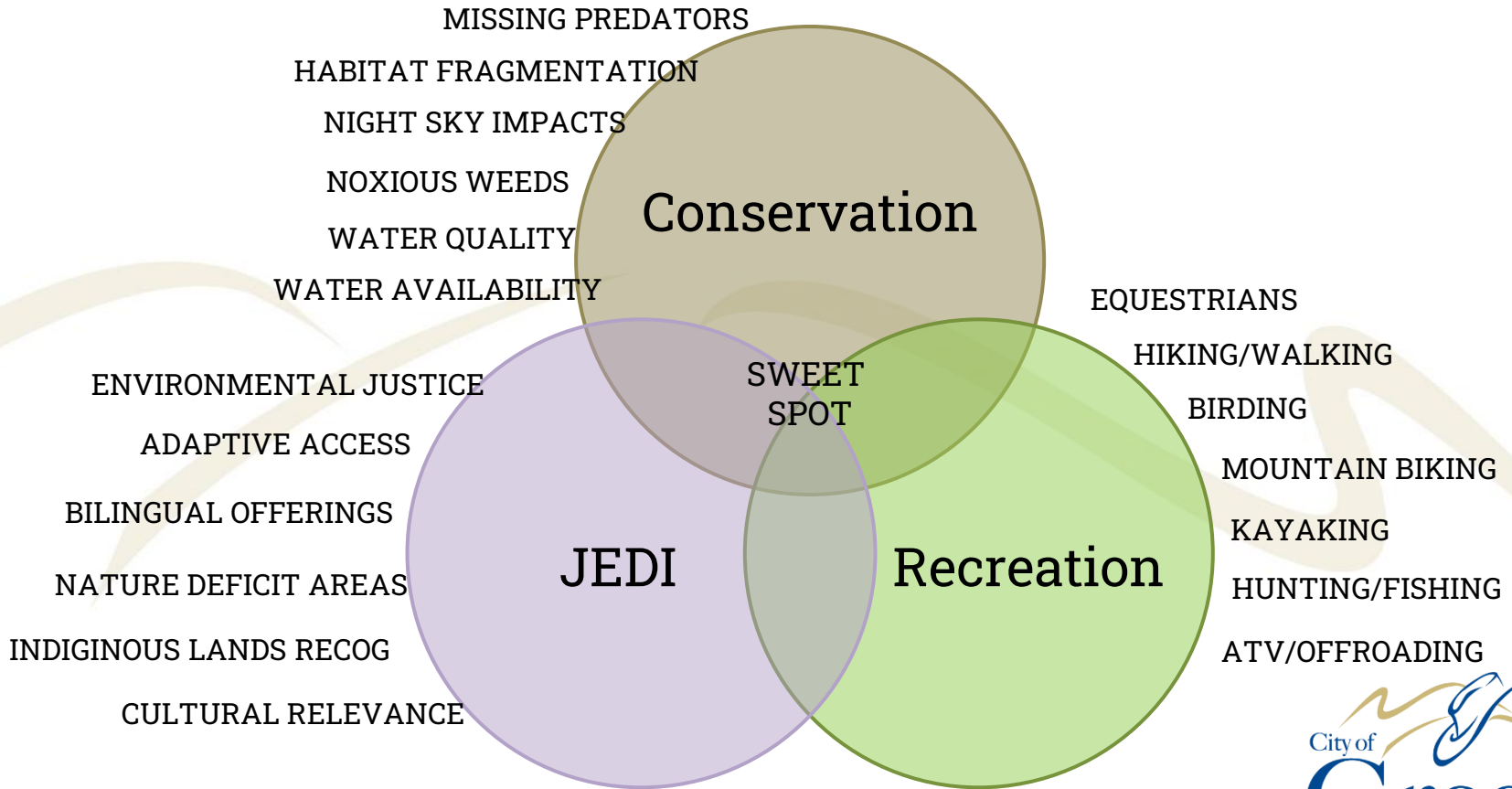
- Larimer & Weld County
- 26 sq mi
- Current pop | 44,632
- Projected buildout pop | 102,000
- 1120 acres open space
- 52 mi off street trails
 - 9 mi Poudre Trail

GREELEY

- Weld County seat
- 49 sq mi
- Current pop | 112,000
- Projected buildout pop | 300-450k
- 2,000 acres natural areas
- 30 mi off street trails
 - 11 mi Poudre Trail







Trail Use by the Numbers



Site

Total ▼

Eastman Park

154,939 ▲ 1.2%

Boardwalk Park

101,165 ▲ 2.7%

Poudre East

71,838 ▲ 1.4%

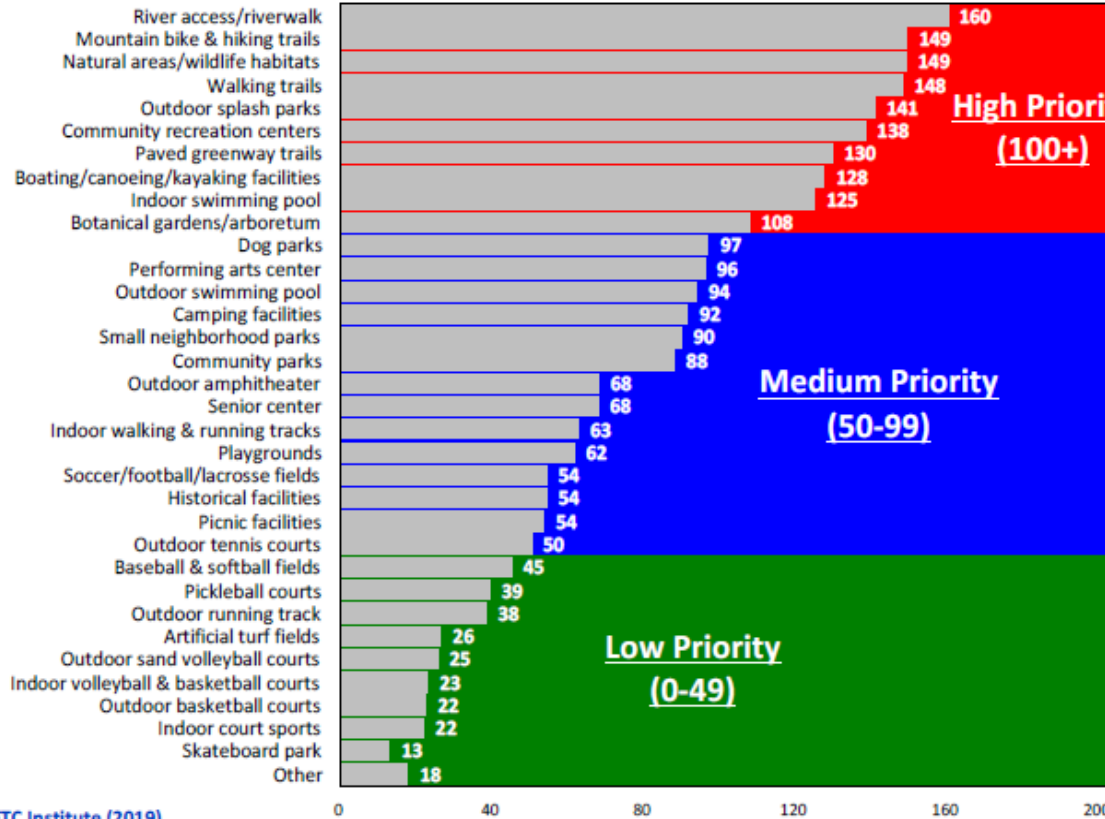
#2 Ditch Trail CRC

59,842 ▲ 1.3%

Priority Investments

- River Access
- MB & Hiking Trails
- Natural Areas/ Wildlife
- Walking
- Paved Greenways
- Boating/Canoeing/Kayaking

Top Priorities for Investment for Recreation Facilities Based on the
Priority Investment Rating



Source: ETC Institute (2019)



Community-Generated Big Ideas

“

These are some of the **big ideas** community members shared during the planning process and helped shape the vision, guiding principles, goals and policies in this plan.

More entertainment and dining options.

More affordable housing for working professionals who support our community.

More trails and connectivity to neighborhoods.

Ensure infrastructure (water, sewer, parking, roads, etc.) is in place to accommodate growth.

Commercial big box needed for food and home stores.

More local parks and open space, trees and landscaping, and water efficiencies.

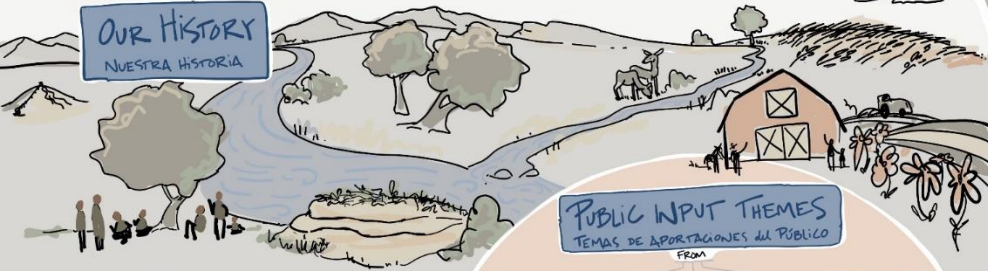
Open space conservation along river corridor and lakes. Preserve Windsor Lake and increase scenic buffers.

Facilitate consensus for downtown opportunities.

Preserve town character and beauty, including the Boardwalk Park and Lake area and downtown historic buildings.

GET OUTDOORS GREELEY STRATEGIC PLAN

OUR HISTORY
NUESTRA HISTORIA



PUBLIC INPUT THEMES
TEMAS DE APORTACIONES DEL PÚBLICO

- FROM
- BOARDS + COMMISSIONS
 - STEERING COMMITTEE
 - VIRTUAL PUBLIC MEETINGS in ENGLISH / ESPAÑOL
 - SUSTAINABLE FUNDING IS NEEDED
 - HONORING our HISTORY and LOOKING AHEAD
 - REGIONAL PARTNERSHIP
 - NATURE in URBAN AREAS
 - TRAIL CONNECTIVITY
 - LISTENING + INCLUSION
 - INCLUDING CHILDREN + YOUTH VOICES



City of Greeley Colorado
NATURAL AREAS & TRAILS

PRIORITY THEMES
TEMAS PRIORITARIOS

- SUSTAINABLE FUNDING
- CONNECTIONS + NATURE
- COMMUNITY CONNECTIONS
- OPERATIONAL EXCELLENCE
- STEWARDSHIP
- CAPITAL PLANNING

OUR FUTURE
NUESTRA FUTURO

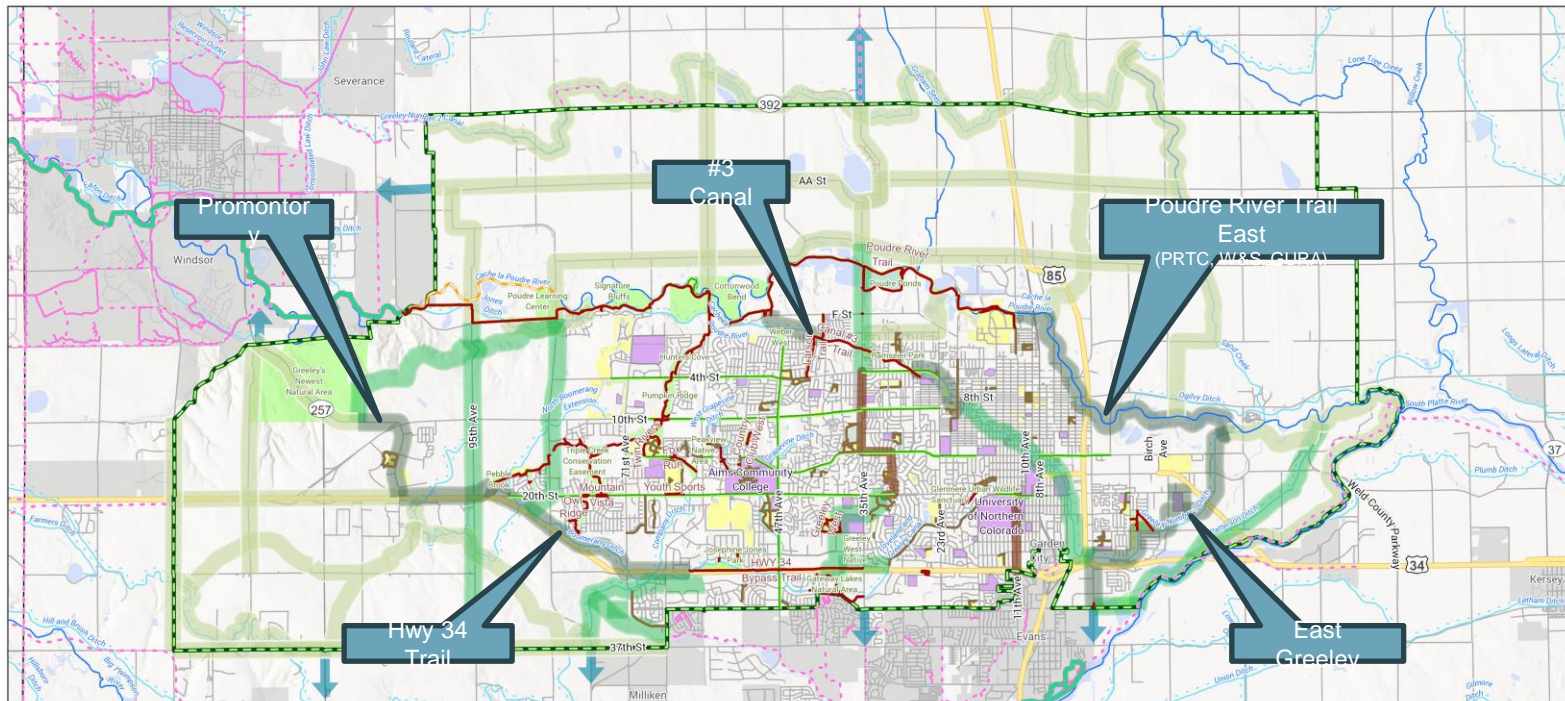
A COMMUNITY CONNECTED to NATURE
UNA COMUNIDAD CONECTADA con la NATURALEZA



Illustrated by
Kerrie Johnson
CONVERSATION.com



Trails Master Plan



Trails Master Plan

Priority

- 1: Next 10 Years
- 2: 10 - 20 Years Out
- 3: Long Range
- Proposed On-Street Connection
- Regional Connection Opportunity

City of Greeley

- Existing Off-street Trail
- Alternative Trail Realignment
- Existing Bike Facility or Multi-Modal Connection
- Existing Park Path
- Natural Area
- City Park
- School

Long-Range Expected Growth Area

Adjacent Cities

- Existing Trail
- Proposed Trail
- Existing Bike Trail
- Adjacent City

- Perennial Stream
- Intermittent Stream
- Ditch
- Lake
- County Boundary



0 1 2 3 Miles

Water for Recreation & Business

- Colorado Parks and Wildlife
- Larimer & Weld County
- Fort Collins, Timnath, Windsor & Greeley
- Poudre River Trail Corridor Board
- Great Western Trail Authority
- Northern Water
- New Cache la Poudre Irrigating Company
- Coalition for the Poudre River Watershed
- Cache la Poudre National Heritage Area
- Poudre Runs Through it
- Trust for Public Lands
- The Conservation Fund
- Great Outdoors Colorado
- North Front Range MPO
- CDOT
- Private Sector Sponsorships/ Letters of Support
- Developers



EASTMAN RIVER EXPERIENCE – PH1

- Parking Capacity
- Trails / Access
- Environmental Education
- Water Access (Kayak / Canoe / Tube)
- Treasure Island Gardens
- Flood Mitigation
- Art / Camping / Fishing





EASTMAN RIVER EXPERIENCE-PH2



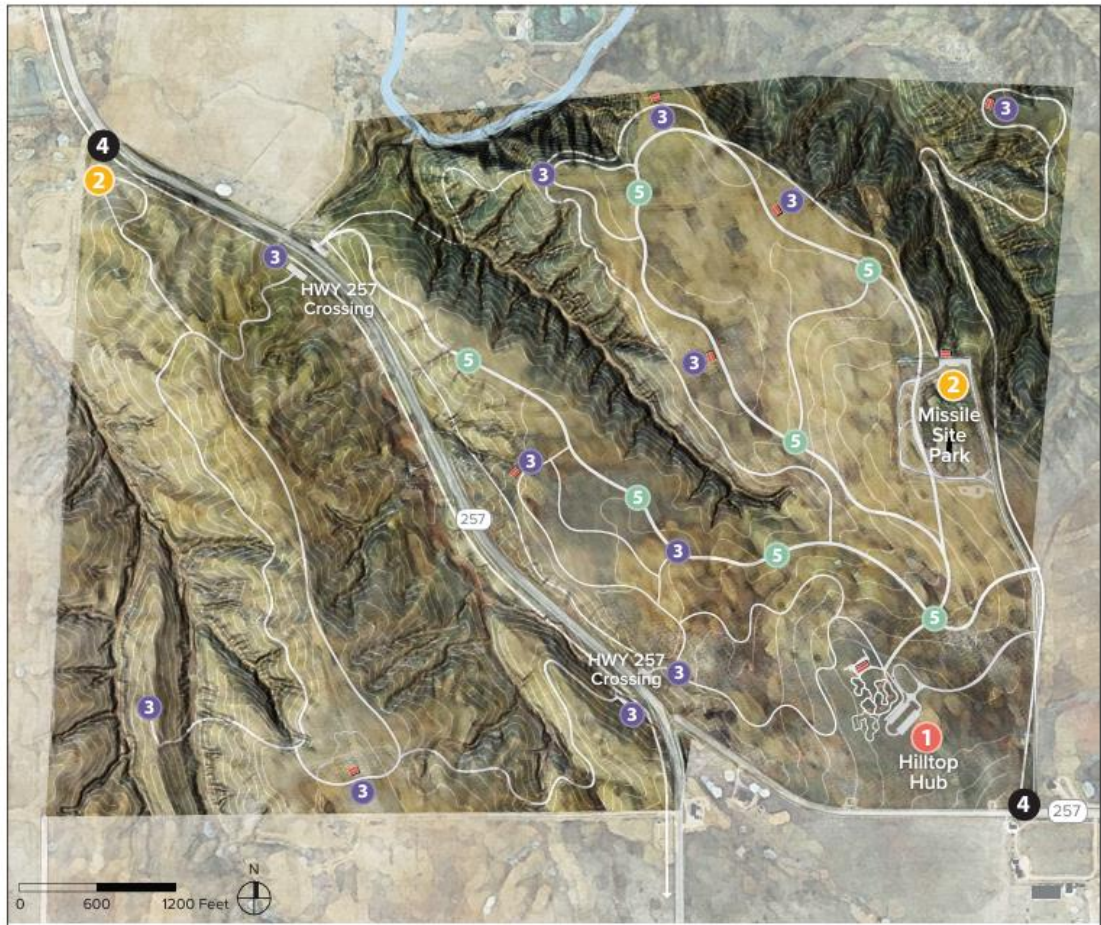
- Boardwalk
- Treasure Island Demonstration
- Poudre Trail Realignment
- Nature Play Elements
- River Access



What does this r

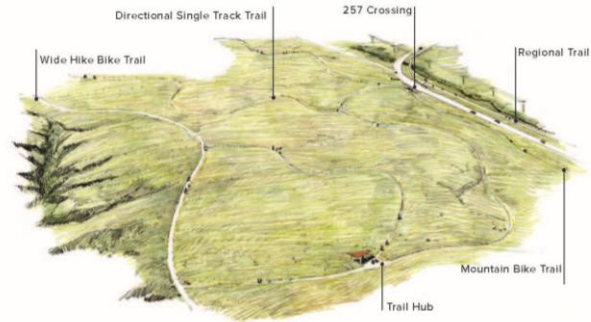
- 52 million investment by environmental upgrades
- New wetland and riparian and improving water q
- New opportunities to rec outdoor areas





- 1 Hilltop Hub
- 2 Visitor Hub/Trailhead
- 3 Visitor Use Facilities (shade shelters, overlooks, seating, interpretation, trail hub etc.)
- 5 Wide Hike/Bike Trail (accessible route and amenities)
- 4 Primary Entrance
- Trails





Concepts



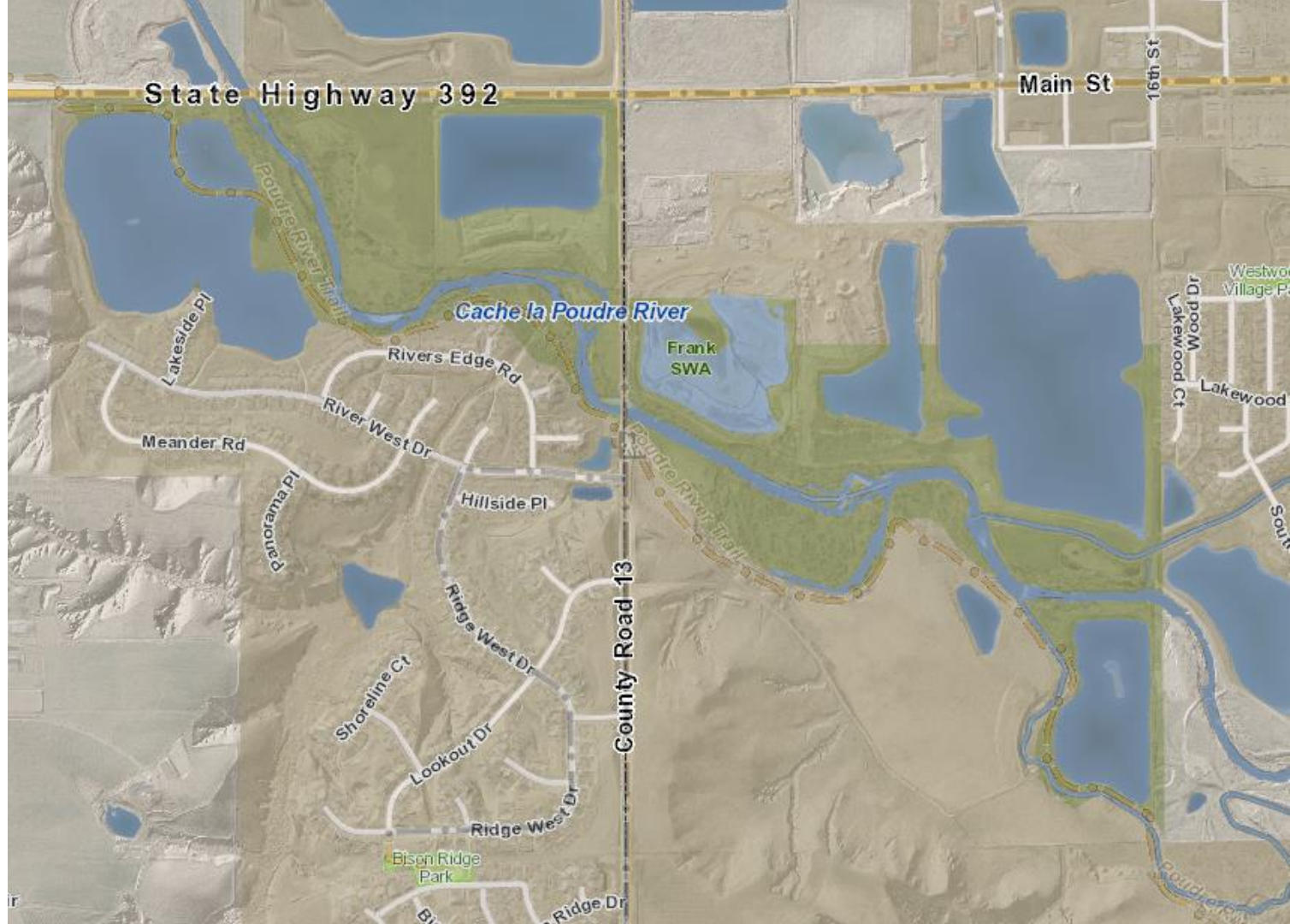
Bike skills course trails will provide diverse trails and features for riders of all ages and abilities to improve their skills (image: Mundus Bishop, 2023).

Overlooks will be sited to capitalize on views and provide space for visitor to rest with seating and shade shelters (image: Mundus Bishop, 2023).

Frank State Wildlife Area

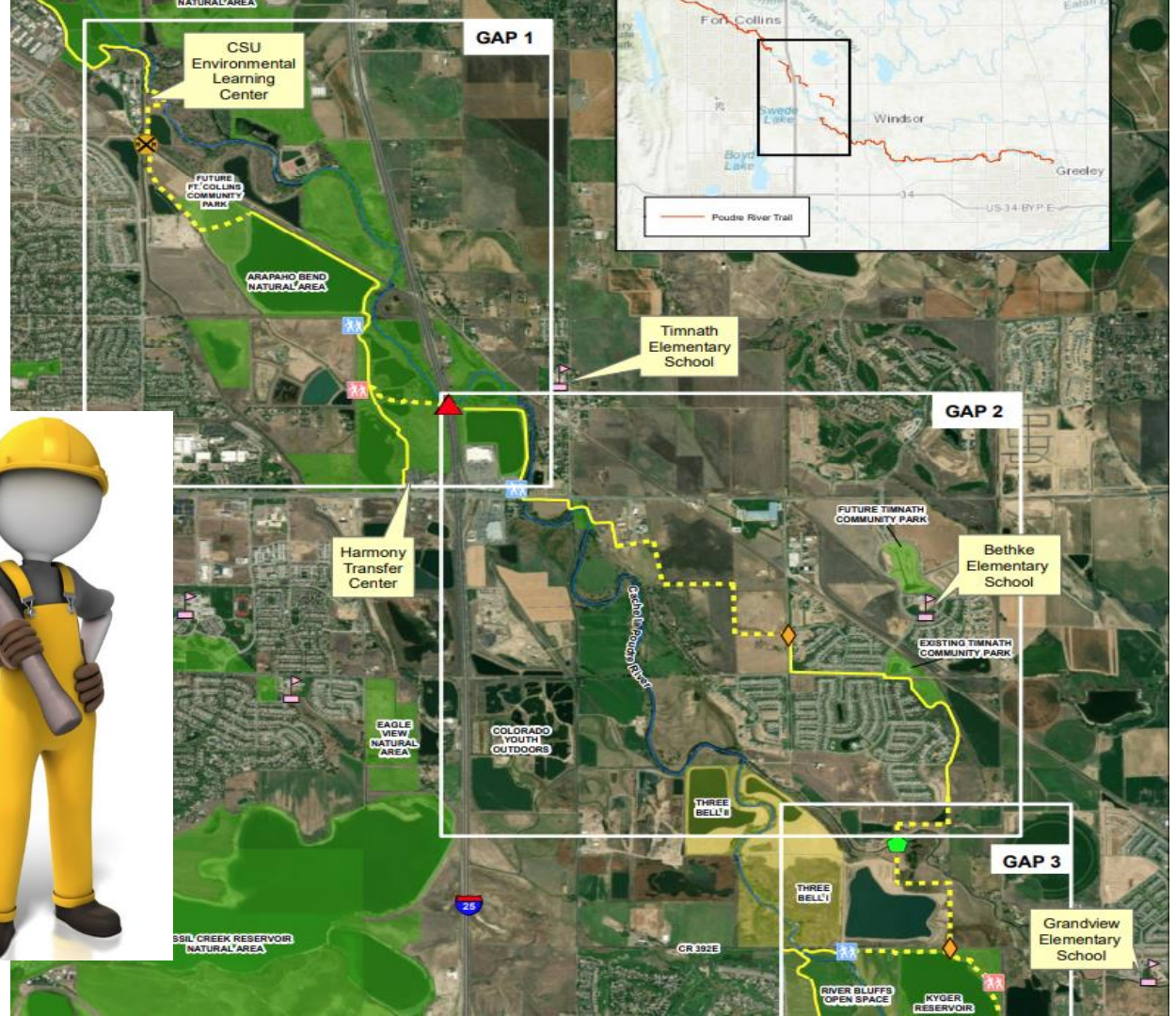
In Process

- Continue to preserve over 324 acres of riparian habitat



POUDRE REGIONAL TRAIL COMPLETION

- 2023 Completion!?
- 42 Contiguous Miles



Cache la Poudre RIVER

Greeley-Windsor Reach

Collaboratively caring for the river corridor's natural resources and fostering beneficial, imaginative, and diverse forms of recreation and educational activities for residents and visitors



Letting the river be a river and flow more naturally through the corridor while ensuring the long-term protection of scenic views, habitat, and wildlife through strategic acquisitions and conservation easements



An analysis of the Poudre River Trail in Reach 13 was conducted to estimate short-term geomorphic hazard to the trail and to consider buffer recommendations from 0-300 feet to produce a recommended new trail alignment that would be more resilient to flood damage and beneficial to riparian health in the future. The short-term geomorphic hazard is a qualitative approximation of geomorphic risk to the trail, based on the threat of stream erosion and deposition processes, including channel migration and avulsion (i.e., the river mainstem changes alignment), associated with the 10-year recurrence interval flood event. Recommended alignment for a new trail is also provided. The dirt trail allows recreational access closer to the river at lower cost investment, from capital and maintenance perspectives. The suggested buffer distances, based off research by the USDA NRCS and previous Stillwater field investigations, represent approximate ranges of area around the Poudre River, which will likely provide a variety of ecological functions beneficial to human and river/riparian health. Examples of these ecological functions and the

LIVINGSTON LEIGH
LIVESTOCK OF WELD CO.

MARTIN MARIETTA
MATERIALS INC

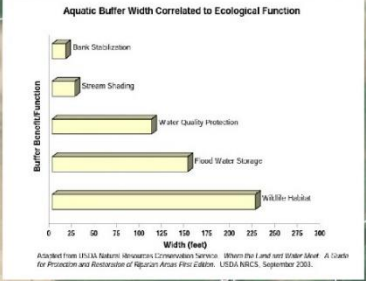
MARTIN MARIETTA
MATERIALS INC

MARTIN MARIETTA
MATERIALS INC

CACHE LLC

CACHE LLC

County Rd 62



Poudre River Preservation and Restoration Opportunities

Reach 13 Geomorphic Hazard Mapping (Page 2 of 4)

DATA SOURCES
Parcels: Weld County Property Portal
Imagery: ESRI World Mapping Service
Roads: ESRI 2016

Prepared for the Town of Windsor and City of Greeley

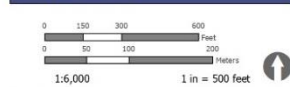
LEGEND

- Parcels
- Short-term geomorphic hazard area
- Bank buffer distance**
- 0-50 ft
- 50-100 ft
- 100-200 ft
- 200-300 ft
- Recommended New Poudre River Trail Alignment
- Recommended New Dirt Trail Alignment

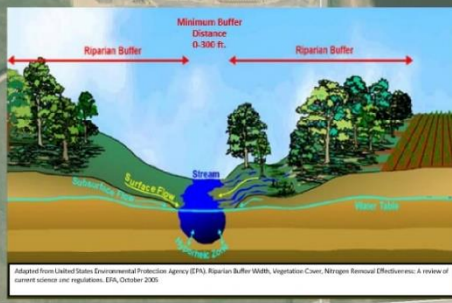
Property Ownership	Area within 300-ft buffer of channel (acres)
CACHE LLC	15.0
GWIP LLC	29.4
Martin Marietta Materials Inc	43.1
Grand Total	87.5

Stillwater Sciences

SCALE & NORTH ARROW



MAP LOCATION



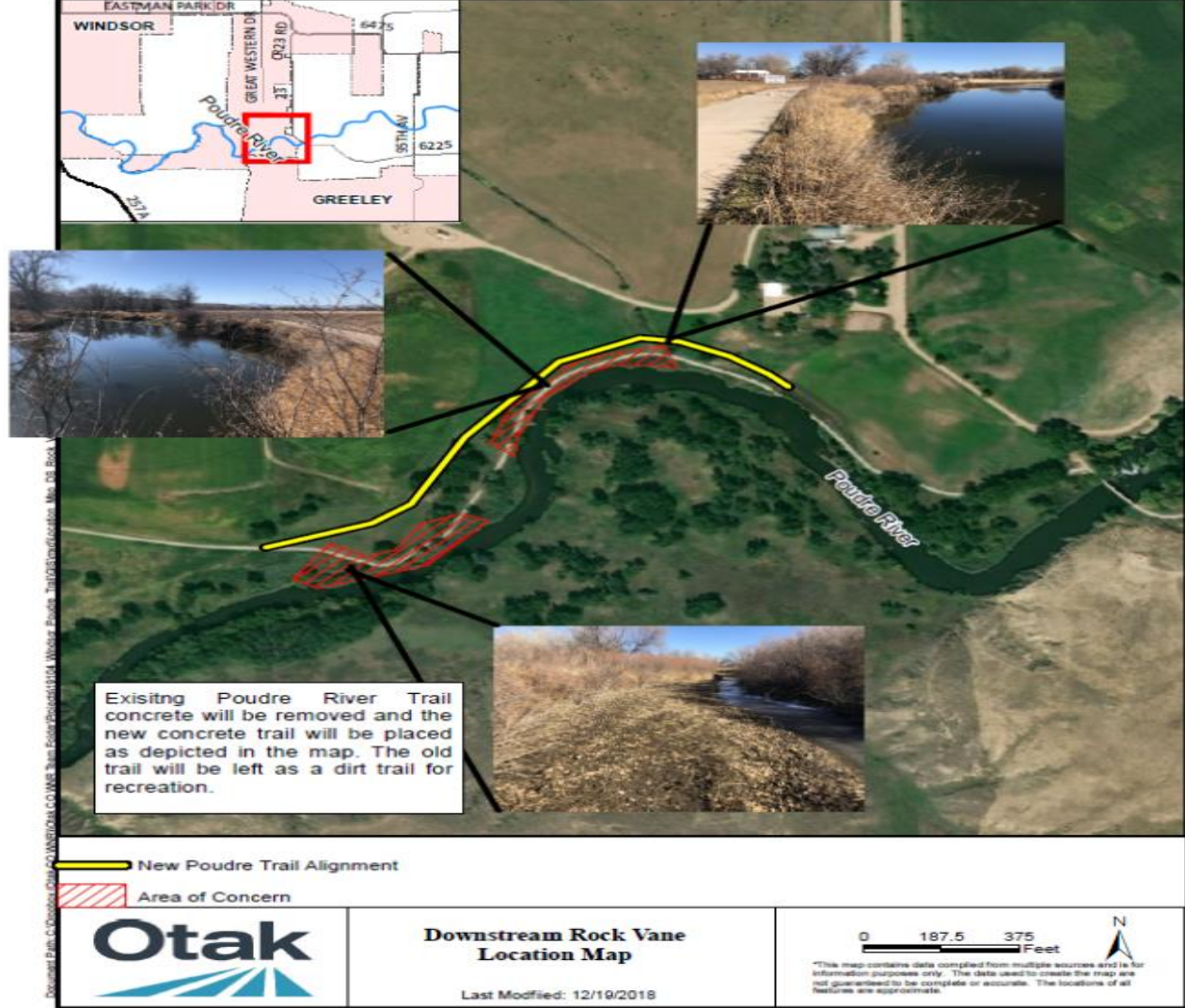
LOWER POUDRE RIVER RECOVERY AND RESILIENCE MASTER PLAN

- Flood Mitigation
- Fish Passage
- Braiding
- Removal of structures



Figure 7-2: Reach 5 Concept Designs
Section 7.0: Designs and Recommendations

POUDRE TRAIL REALIGNMENT





River/Trail Repair Projects

- Balancing recreation and river health
- Floodplain impacts
- Opportunity costs for other priorities
- Paying now for past (well-intentioned) decisions





NHAs are a **grassroots**, community-driven approach to **heritage conservation** and **economic development**. Through public-private partnerships, NHA entities support **historic preservation**, natural resource **conservation**, **recreation**, **heritage tourism**, and educational projects, NHA partnerships foster pride of place and an enduring stewardship ethic.

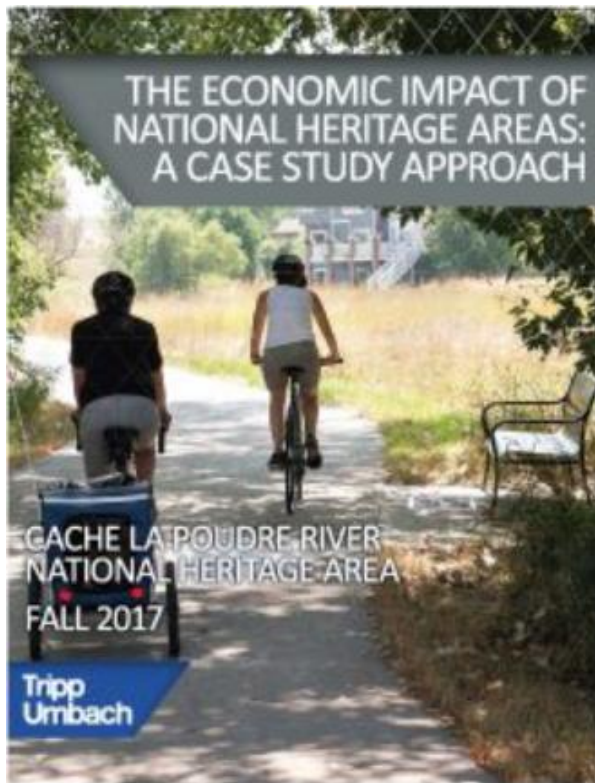


Figure 1. Overall Economic Impact

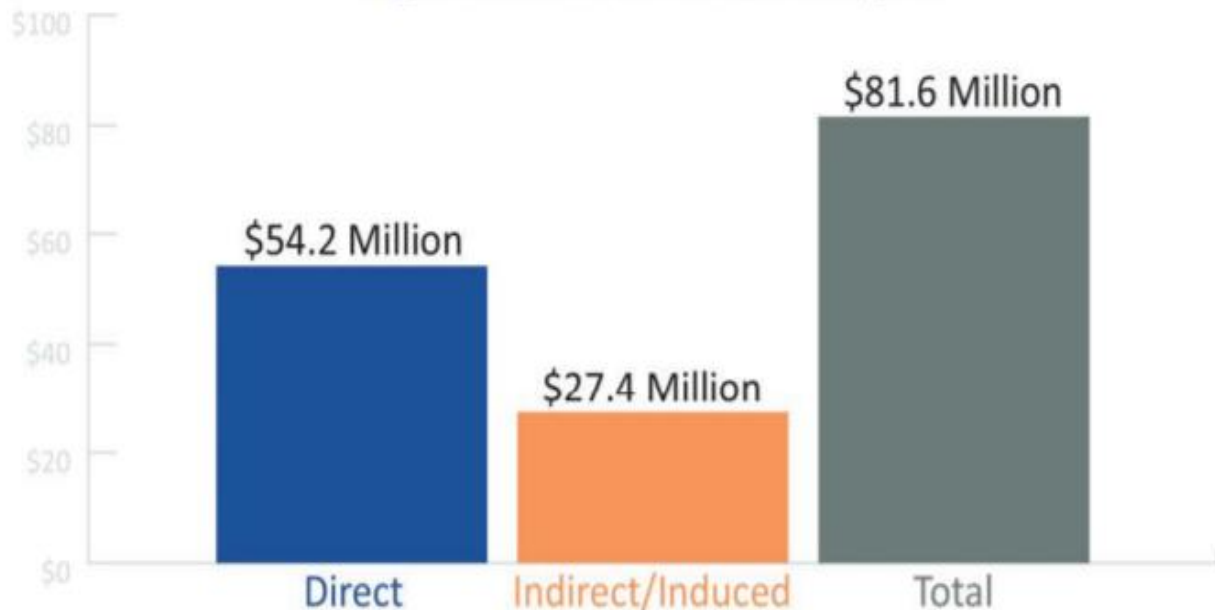
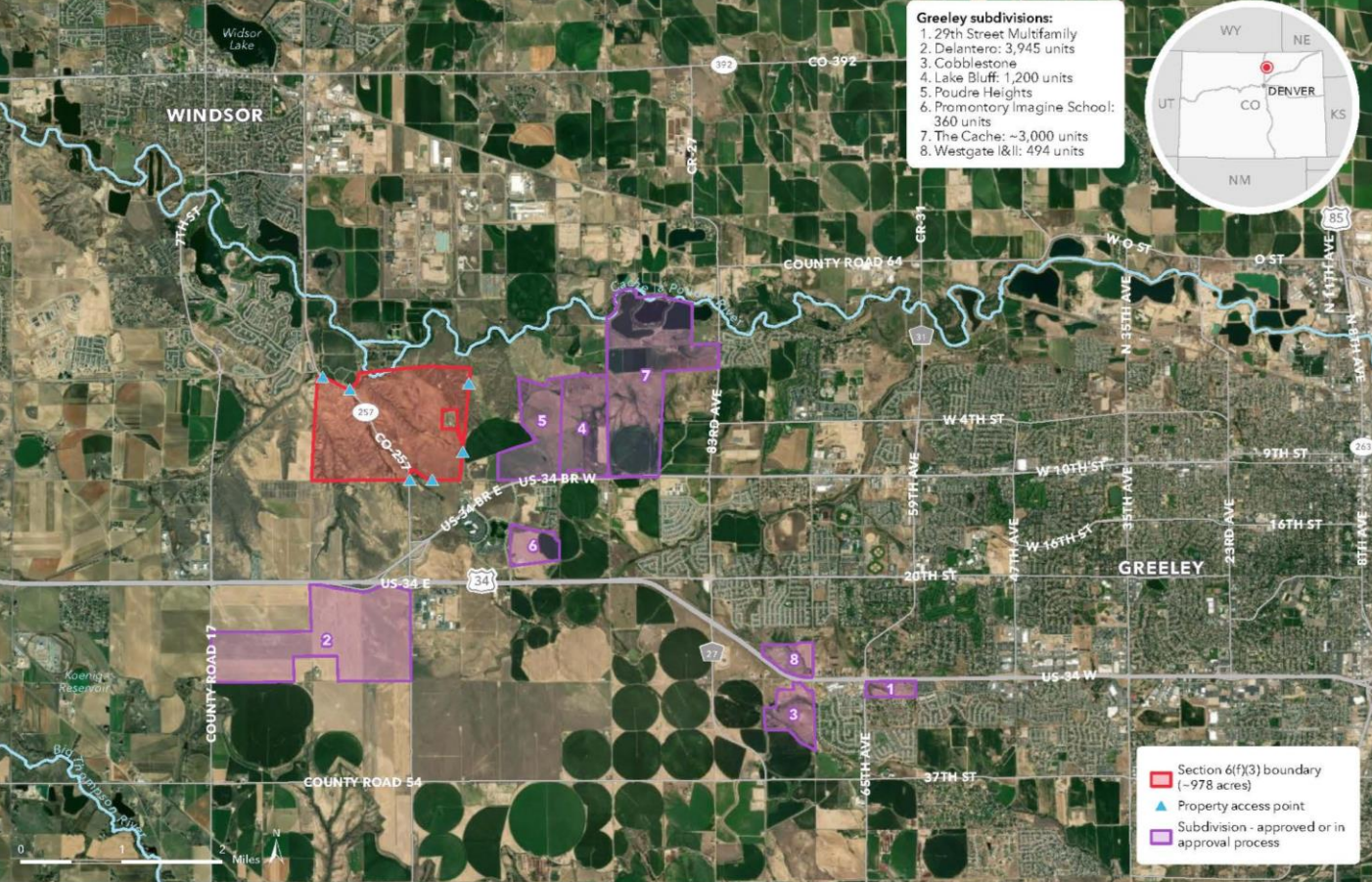


TABLE 1. OVERALL ECONOMIC IMPACT

	Direct Effect	Indirect Effect	Induced Effect	Total Effect
Economic Impact	\$54,240,251	\$14,813,104	\$12,522,669	\$81,576,026
<i>Tourism</i>	<i>\$53,793,270</i>	<i>\$14,607,006</i>	<i>\$12,411,700</i>	<i>\$80,811,976</i>
<i>Operations</i>	<i>\$359,176</i>	<i>\$176,537</i>	<i>\$92,929</i>	<i>\$628,644</i>
<i>Grantmaking</i>	<i>\$61,129</i>	<i>\$24,487</i>	<i>\$12,304</i>	<i>\$97,920</i>
<i>Capital Projects</i>	<i>\$26,676</i>	<i>\$5,074</i>	<i>\$5,736</i>	<i>\$37,486</i>

FUNDING CONSERVATION

- CTF
 - COG \$500,000
 - TOW \$873,000
- Development Funds
 - COG \$500k (trails only)
 - TOW Park and Trail Development Fee \$4.57 Million (Includes Parks)
- Dedicated OS Sales Tax
 - TOW OS Tax \$1.6 Million Annually
 - COG \$0 (Projected revenue \$4+ Million annually)
- Grants
 - GOCO - \$3+ recent awards
 - CPW
 - LWCF - \$1.25 million



Development Pressure

- Greeley**
- 6000+ new units
 - 16,000 new residents
 - 14% population increase

LWCF Section 6(f)(3) vicinity

SHUR VIEW, WELD COUNTY, COLORADO

September 28, 2021. Copyright © The Trust for Public Land. The Trust for Public Land and The Trust for Public Land logo are federally registered marks of The Trust for Public Land. Information on this map is provided for purposes of discussion and visualization only. www.tpl.org



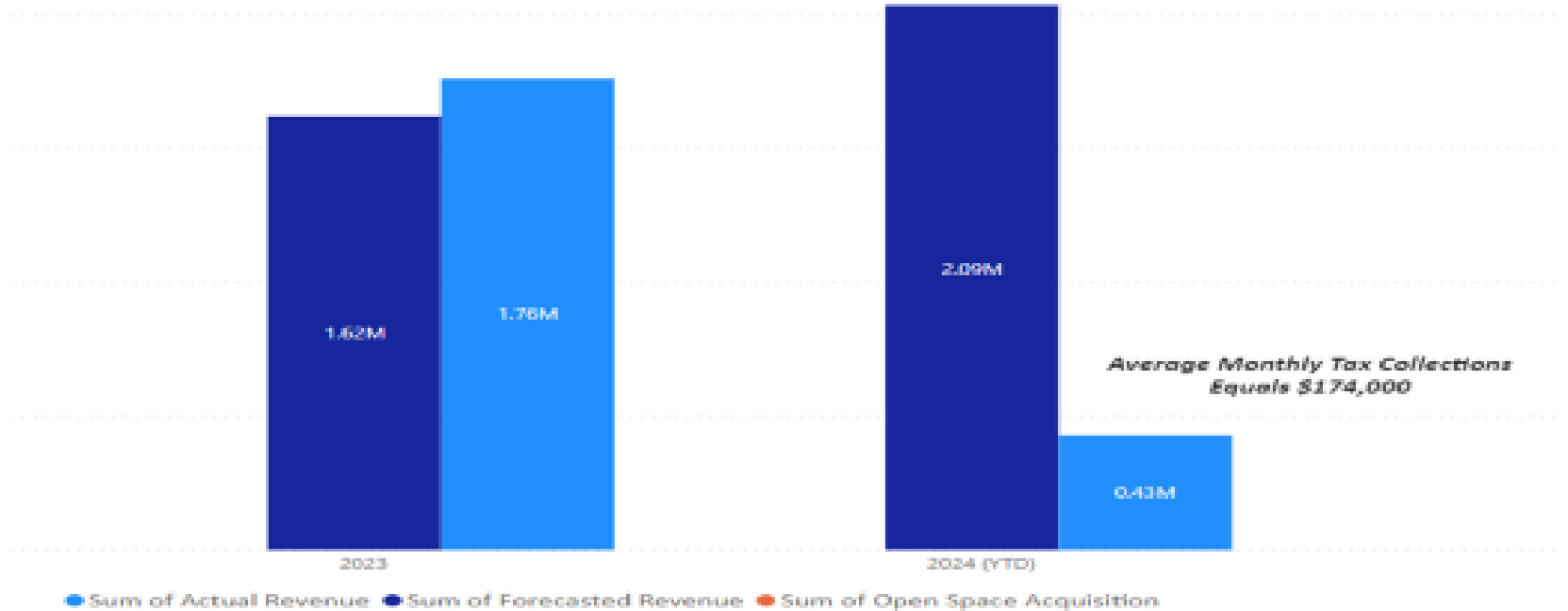


NEWS

Election 2022: Voters support Windsor school funding, open space tax

Bethany Osborn and Sady Swanson Fort Collins Coloradoan

Published 11:32 p.m. MT Nov. 8, 2022 | Updated 11:22 a.m. MT Nov. 9, 2022



Questions?

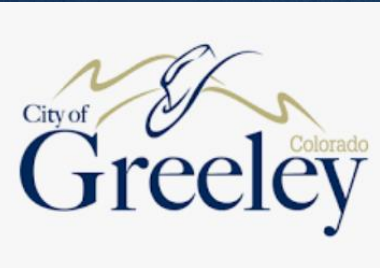


Wade Willis
wwillis@windsorgov.com
970-674-2434

Justin Scharton
Justin.scharton@greeleygov.com
970-590-1705



Open Space
and Trails



Natural Areas
& Trails

4/10/24